

Datasheet for ABIN7193512

**anti-TUBB3 antibody**

5 Images

[Go to Product page](#)

## Overview

Quantity:	0.1 mg
Target:	TUBB3
Reactivity:	Human, Mouse
Host:	Mouse
Clonality:	Monoclonal
Conjugate:	This TUBB3 antibody is un-conjugated
Application:	Western Blotting (WB), ELISA, Immunohistochemistry (IHC), Flow Cytometry (FACS)

## Product Details

Immunogen:	Synthesized peptide of human TUBB3 (AA: cMYEDDEESEAQGPK)
Clone:	8E3A7
Isotype:	IgG1

## Target Details

Target:	TUBB3
Alternative Name:	TUBB3 ( <a href="#">TUBB3 Products</a> )
Background:	Description: This gene encodes a class III member of the beta tubulin protein family. Beta tubulins are one of two core protein families (alpha and beta tubulins) that heterodimerize and assemble to form microtubules. This protein is primarily expressed in neurons and may be involved in neurogenesis and axon guidance and maintenance. Mutations in this gene are the cause of congenital fibrosis of the extraocular muscles type 3. Alternate splicing results in

## Target Details

multiple transcript variants. A pseudogene of this gene is found on chromosome 6.  
Aliases: CDCBM, FEOM3, TUBB4, CDCBM1, CFEOM3, beta-4, CFEOM3A

Molecular Weight: 50.4 kDa

Gene ID: 10381

Pathways: [Microtubule Dynamics, M Phase](#)

## Application Details

Application Notes: WB:1:500 - 1:2000, IHC:1:200 - 1:1000, FCM:1:200 - 1:400, ELISA:1:10000,

Restrictions: For Research Use only

## Handling

Buffer: Purified antibody in PBS with 0.05 % sodium azide

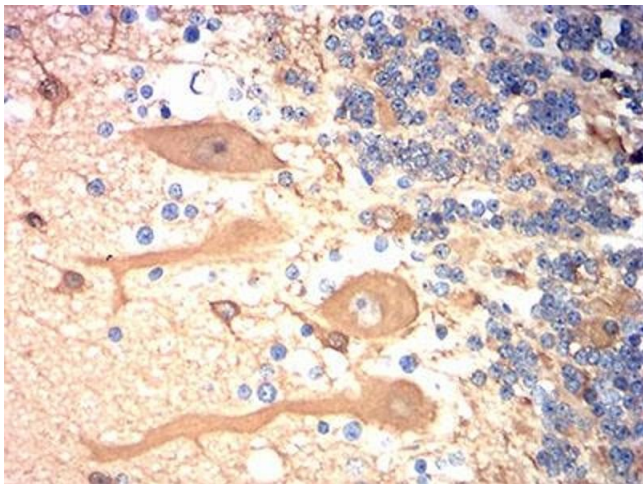
Preservative: Sodium azide

Precaution of Use: This product contains Sodium azide: a POISONOUS AND HAZARDOUS SUBSTANCE which should be handled by trained staff only.

Storage: 4 °C/-20 °C

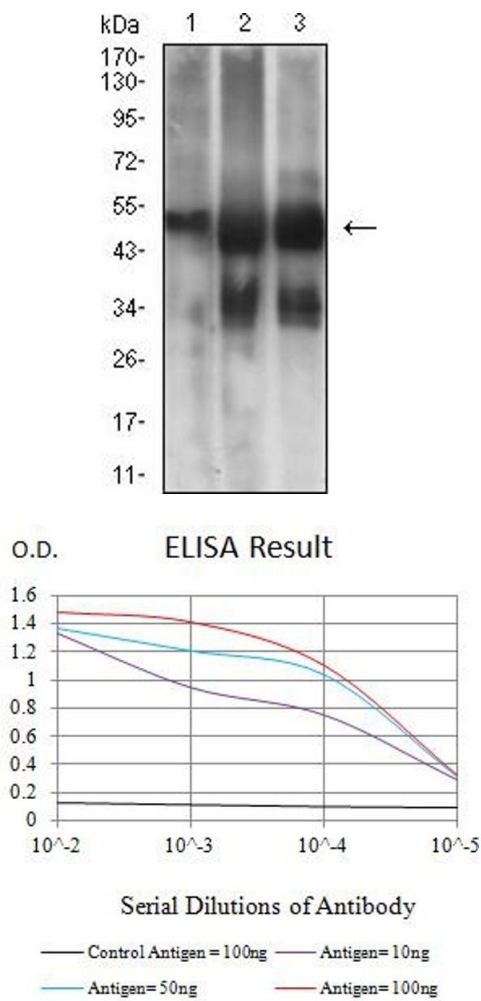
Storage Comment: 4°C, -20°C for long term storage

## Images



### Immunohistochemistry

**Image 1.** Immunohistochemical analysis of paraffin-embedded cerebellum tissues using TUBB3 mouse mAb with DAB staining.



Western Blotting

**Image 2.** Western blot analysis using TUBB3 mouse mAb against NIH/3T3 (1), Hela (2), and A549 (3) cell lysate.

ELISA

**Image 3.** Black line: Control Antigen (100 ng),Purple line: Antigen (10 ng), Blue line: Antigen (50 ng), Red line:Antigen (100 ng)

Please check the [product details page](#) for more images. Overall 5 images are available for ABIN7193512.