



[Go to Product page](#)

Datasheet for ABIN7193517
anti-SAA1 antibody (AA 19-212)

3 Images

Overview

Quantity:	0.1 mg
Target:	SAA1
Binding Specificity:	AA 19-212
Reactivity:	Human
Host:	Mouse
Clonality:	Monoclonal
Conjugate:	This SAA1 antibody is un-conjugated
Application:	ELISA, Western Blotting (WB)

Product Details

Immunogen:	Purified recombinant fragment of human SAA1 (AA: 19-212) expressed in E. coli.
Clone:	6A5B10
Isotype:	IgG2a
Purification:	purified

Target Details

Target:	SAA1
Alternative Name:	SAA1 (SAA1 Products)
Background:	Description: This gene encodes a member of the serum amyloid A family of apolipoproteins. The encoded preproprotein is proteolytically processed to generate the mature protein. This

Target Details

protein is a major acute phase protein that is highly expressed in response to inflammation and tissue injury. This protein also plays an important role in HDL metabolism and cholesterol homeostasis. High levels of this protein are associated with chronic inflammatory diseases including atherosclerosis, rheumatoid arthritis, Alzheimer's disease and Crohn's disease. This protein may also be a potential biomarker for certain tumors. Alternate splicing results in multiple transcript variants that encode the same protein. A pseudogene of this gene is found on chromosome 11.

Aliases: SAA, PIG4, SAA2, TP53I4

Molecular Weight: 13.5 kDa

Gene ID: 6288

Pathways: [Toll-Like Receptors Cascades](#)

Application Details

Application Notes: WB:1:500 - 1:2000, ELISA:1:10000,

Restrictions: For Research Use only

Handling

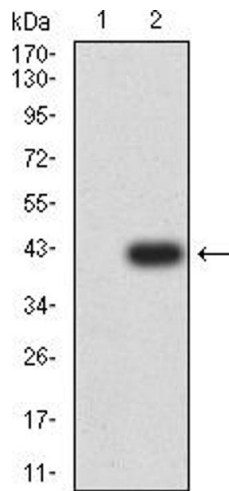
Buffer: Purified antibody in PBS with 0.05 % sodium azide

Preservative: Sodium azide

Precaution of Use: This product contains Sodium azide: a POISONOUS AND HAZARDOUS SUBSTANCE which should be handled by trained staff only.

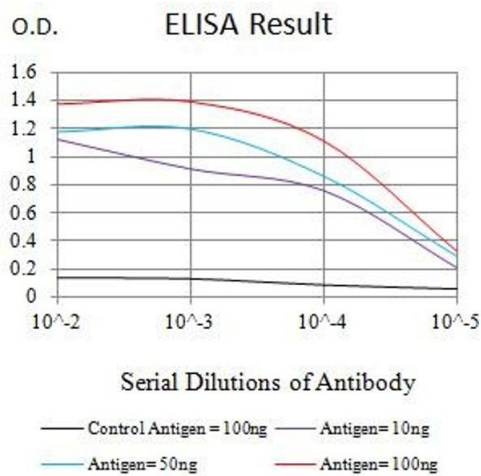
Storage: 4 °C/-20 °C

Storage Comment: 4°C, -20°C for long term storage



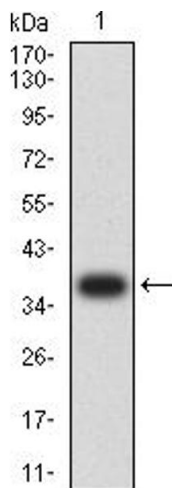
Western Blotting

Image 1. Western blot analysis using SAA1 mAb against HEK293 (1) and SAA1 (AA: 19-212)-hlgGFc transfected HEK293 (2) cell lysate.



ELISA

Image 2. Black line: Control Antigen (100 ng), Purple line: Antigen (10 ng), Blue line: Antigen (50 ng), Red line: Antigen (100 ng)



Western Blotting

Image 3. Western blot analysis using SAA1 mAb against human SAA1 (AA: 19-212) recombinant protein. (Expected MW is 37.6 kDa)