

Datasheet for ABIN7193518
anti-KRT20 antibody (AA 1-150)[Go to Product page](#)

4 Images

Overview

Quantity:	0.1 mg
Target:	KRT20
Binding Specificity:	AA 1-150
Reactivity:	Human
Host:	Mouse
Clonality:	Monoclonal
Conjugate:	This KRT20 antibody is un-conjugated
Application:	Western Blotting (WB), Immunohistochemistry (IHC), ELISA

Product Details

Immunogen:	Purified recombinant fragment of human KRT20 (AA: 1-150) expressed in E. coli.
Clone:	2C7B9
Isotype:	IgG1
Purification:	purified

Target Details

Target:	KRT20
Alternative Name:	KRT20 (KRT20 Products)
Background:	Description: The protein encoded by this gene is a member of the keratin family. The keratins are intermediate filament proteins responsible for the structural integrity of epithelial cells and

Target Details

are subdivided into cytokeratins and hair keratins. The type I cytokeratins consist of acidic proteins which are arranged in pairs of heterotypic keratin chains. This cytokeratin is a major cellular protein of mature enterocytes and goblet cells and is specifically expressed in the gastric and intestinal mucosa. The type I cytokeratin genes are clustered in a region of chromosome 17q12-q21.

Aliases: K20, CD20, CK20, CK-20, KRT21

Molecular Weight: 48.5 kDa

Gene ID: 54474

Application Details

Application Notes: WB:1:500 - 1:2000, IHC:1:200 - 1:1000, ELISA:1:10000,

Restrictions: For Research Use only

Handling

Buffer: Purified antibody in PBS with 0.05 % sodium azide

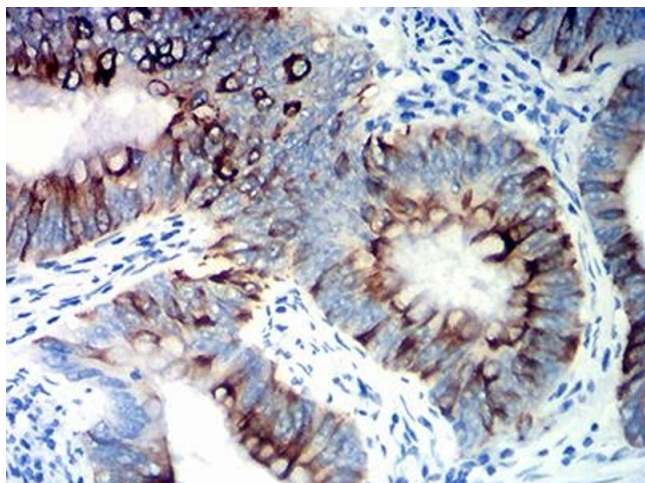
Preservative: Sodium azide

Precaution of Use: This product contains Sodium azide: a POISONOUS AND HAZARDOUS SUBSTANCE which should be handled by trained staff only.

Storage: 4 °C/-20 °C

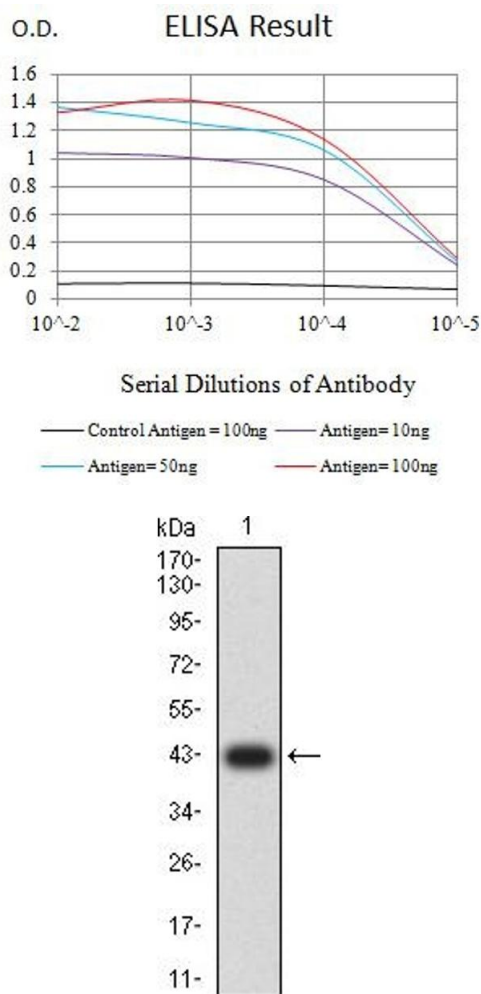
Storage Comment: 4°C, -20°C for long term storage

Images



Immunohistochemistry

Image 1. Immunohistochemical analysis of paraffin-embedded colon cancer tissues using KRT20 mouse mAb with DAB staining.



ELISA

Image 2. Black line: Control Antigen (100 ng),Purple line: Antigen (10 ng), Blue line: Antigen (50 ng), Red line:Antigen (100 ng)

Western Blotting

Image 3. Western blot analysis using KRT20 mAb against human KRT20 (AA: 1-150) recombinant protein. (Expected MW is 42.8 kDa)

Please check the [product details page](#) for more images. Overall 4 images are available for ABIN7193518.