

Datasheet for ABIN7193524
anti-PD-1 antibody (AA 192-288)

5 Images

[Go to Product page](#)

Overview

Quantity:	0.1 mg
Target:	PD-1 (PDCD1)
Binding Specificity:	AA 192-288
Reactivity:	Human
Host:	Mouse
Clonality:	Monoclonal
Application:	Flow Cytometry (FACS), Western Blotting (WB), ELISA

Product Details

Immunogen:	Purified recombinant fragment of human PD1 (AA: 192-288) expressed in E. coli.
Clone:	8G5B12
Isotype:	IgG1
Purification:	purified

Target Details

Target:	PD-1 (PDCD1)
Alternative Name:	PD1 (PDCD1 Products)
Background:	Description: This gene encodes a cell surface membrane protein of the immunoglobulin superfamily. This protein is expressed in pro-B-cells and is thought to play a role in their differentiation. In mice, expression of this gene is induced in the thymus when anti-CD3 antibodies are injected and large numbers of thymocytes undergo apoptosis. Mice deficient for

Target Details

this gene bred on a BALB/c background developed dilated cardiomyopathy and died from congestive heart failure. These studies suggest that this gene product may also be important in T cell function and contribute to the prevention of autoimmune diseases.

Aliases: PDCD1, PD-1, CD279, SLEB2, hPD-1, hPD-I, hSLE1

Molecular Weight: 31.6 kDa

Gene ID: 5133

Pathways: [Cancer Immune Checkpoints](#)

Application Details

Application Notes: WB:1:500 - 1:2000, FCM:1:200 - 1:400, ELISA:1:10000,

Restrictions: For Research Use only

Handling

Buffer: Purified antibody in PBS with 0.05 % sodium azide

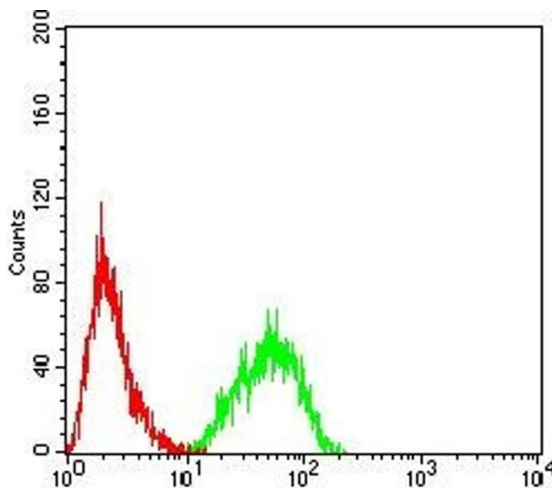
Preservative: Sodium azide

Precaution of Use: This product contains Sodium azide: a POISONOUS AND HAZARDOUS SUBSTANCE which should be handled by trained staff only.

Storage: 4 °C/-20 °C

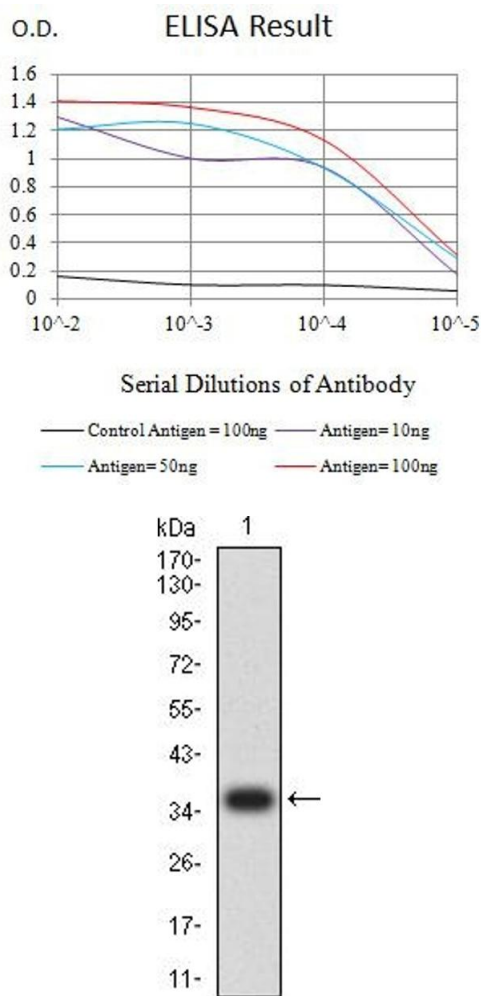
Storage Comment: 4°C, -20°C for long term storage

Images



Flow Cytometry

Image 1. Flow cytometric analysis of Jurkat cells using PD1 mouse mAb (green) and negative control (red).



ELISA

Image 2. Black line: Control Antigen (100 ng),Purple line: Antigen (10 ng), Blue line: Antigen (50 ng), Red line:Antigen (100 ng)

Western Blotting

Image 3. Western blot analysis using PD1 mAb against human PD1 (AA: 192-288) recombinant protein. (Expected MW is 36.5 kDa)

Please check the [product details page](#) for more images. Overall 5 images are available for ABIN7193524.