

Datasheet for ABIN7193538  
**anti-L1CAM antibody (AA 20-197)**[Go to Product page](#)

## 4 Images

## Overview

Quantity:	0.1 mg
Target:	L1CAM
Binding Specificity:	AA 20-197
Reactivity:	Human
Host:	Mouse
Clonality:	Monoclonal
Conjugate:	This L1CAM antibody is un-conjugated
Application:	Western Blotting (WB), Flow Cytometry (FACS), ELISA

## Product Details

Immunogen:	Purified recombinant fragment of human CD171 (AA: 20-197) expressed in E. coli.
Clone:	5C6A10
Isotype:	IgG1
Purification:	purified

## Target Details

Target:	L1CAM
Alternative Name:	CD171 ( <a href="#">L1CAM Products</a> )
Background:	Description: The protein encoded by this gene is an axonal glycoprotein belonging to the immunoglobulin supergene family. The ectodomain, consisting of several immunoglobulin-like

## Target Details

domains and fibronectin-like repeats (type III), is linked via a single transmembrane sequence to a conserved cytoplasmic domain. This cell adhesion molecule plays an important role in nervous system development, including neuronal migration and differentiation. Mutations in the gene cause X-linked neurological syndromes known as CRASH (corpus callosum hypoplasia, retardation, aphasia, spastic paraplegia and hydrocephalus). Alternative splicing of this gene results in multiple transcript variants, some of which include an alternate exon that is considered to be specific to neurons.

Aliases: L1CAM, S10, HSAS, MASA, MIC5, SPG1, CAML1, HSAS1, N-CAML1, NCAM-L1, N-CAM-L1

Molecular Weight:	140 kDa
-------------------	---------

Gene ID:	3897
----------	------

Pathways:	<a href="#">Synaptic Membrane</a>
-----------	-----------------------------------

## Application Details

Application Notes:	WB:1:500 - 1:2000, FCM:1:200 - 1:400, ELISA:1:10000,
--------------------	--

Restrictions:	For Research Use only
---------------	-----------------------

## Handling

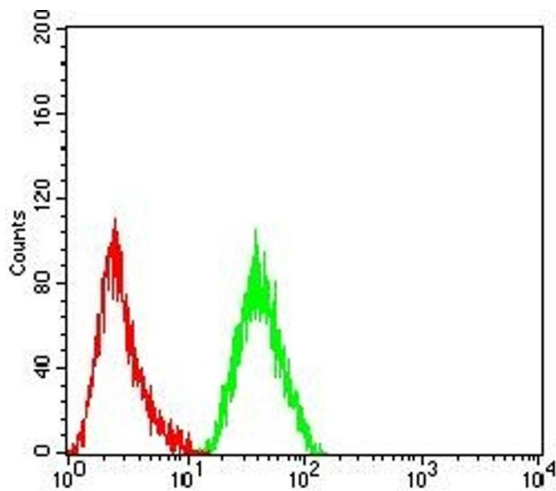
Buffer:	Purified antibody in PBS with 0.05 % sodium azide
---------	---

Preservative:	Sodium azide
---------------	--------------

Precaution of Use:	This product contains Sodium azide: a POISONOUS AND HAZARDOUS SUBSTANCE which should be handled by trained staff only.
--------------------	--

Storage:	4 °C/-20 °C
----------	-------------

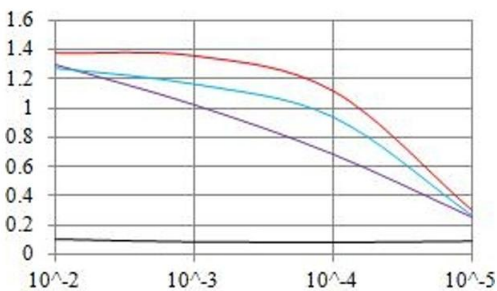
Storage Comment:	4°C, -20°C for long term storage
------------------	----------------------------------



### Flow Cytometry

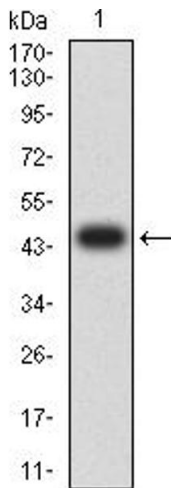
**Image 1.** Flow cytometric analysis of THP-1 cells using CD171 mouse mAb (green) and negative control (red).

### ELISA Result



### Serial Dilutions of Antibody

— Control Antigen = 100ng — Antigen = 10ng  
— Antigen = 50ng — Antigen = 100ng



### ELISA

**Image 2.** Black line: Control Antigen (100 ng), Purple line: Antigen (10 ng), Blue line: Antigen (50 ng), Red line: Antigen (100 ng)

### Western Blotting

**Image 3.** Western blot analysis using CD171 mAb against human CD171 (AA: 20-197) recombinant protein. (Expected MW is 46.1 kDa)

Please check the [product details page](#) for more images. Overall 4 images are available for ABIN7193538.