



[Go to Product page](#)

Datasheet for ABIN7193541
anti-COL1A2 antibody (AA 23-79)

5 Images

Overview

Quantity:	0.1 mg
Target:	COL1A2
Binding Specificity:	AA 23-79
Reactivity:	Human
Host:	Mouse
Clonality:	Monoclonal
Conjugate:	This COL1A2 antibody is un-conjugated
Application:	Western Blotting (WB), ELISA, Immunocytochemistry (ICC), Flow Cytometry (FACS)

Product Details

Immunogen:	Purified recombinant fragment of human COL1A2 (AA: 23-79) expressed in E. coli.
Clone:	4D1A7
Isotype:	IgG1
Purification:	purified

Target Details

Target:	COL1A2
Alternative Name:	COL1A2 (COL1A2 Products)
Background:	Description: This gene encodes the pro-alpha2 chain of type I collagen whose triple helix comprises two alpha1 chains and one alpha2 chain. Type I is a fibril-forming collagen found in

Target Details

most connective tissues and is abundant in bone, cornea, dermis and tendon. Mutations in this gene are associated with osteogenesis imperfecta types I-IV, Ehlers-Danlos syndrome type VIIB, recessive Ehlers-Danlos syndrome Classical type, idiopathic osteoporosis, and atypical Marfan syndrome. Symptoms associated with mutations in this gene, however, tend to be less severe than mutations in the gene for the alpha1 chain of type I collagen (COL1A1) reflecting the different role of alpha2 chains in matrix integrity. Three transcripts, resulting from the use of alternate polyadenylation signals, have been identified for this gene.

Aliases: OI4, EDSCV, EDSARTH2

Molecular Weight:	129 kDa
-------------------	---------

Gene ID:	1278
----------	------

Application Details

Application Notes:	WB:1:500 - 1:2000, ICC:1:200 - 1:1000, FCM:1:200 - 1:400, ELISA:1:10000,
--------------------	--

Restrictions:	For Research Use only
---------------	-----------------------

Handling

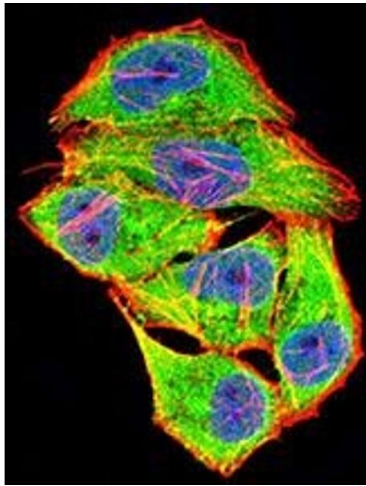
Buffer:	Purified antibody in PBS with 0.05 % sodium azide
---------	---

Preservative:	Sodium azide
---------------	--------------

Precaution of Use:	This product contains Sodium azide: a POISONOUS AND HAZARDOUS SUBSTANCE which should be handled by trained staff only.
--------------------	--

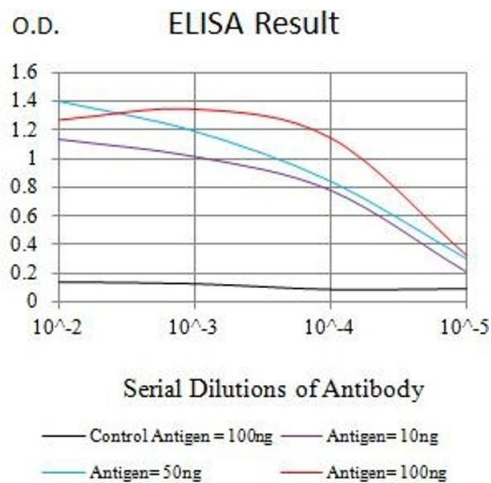
Storage:	4 °C/-20 °C
----------	-------------

Storage Comment:	4°C, -20°C for long term storage
------------------	----------------------------------



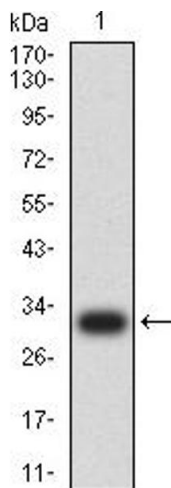
Immunofluorescence

Image 1. Immunofluorescence analysis of HeLa cells using COL1A2 mouse mAb (green). Blue: DRAQ5 fluorescent DNA dye. Red: Actin filaments have been labeled with Alexa Fluor- 555 phalloidin. Secondary antibody from Fisher (Cat#: 35503)



ELISA

Image 2. Black line: Control Antigen (100 ng),Purple line: Antigen (10 ng), Blue line: Antigen (50 ng), Red line:Antigen (100 ng)



Western Blotting

Image 3. Western blot analysis using COL1A2 mAb against human COL1A2 (AA: 23-79) recombinant protein. (Expected MW is 31.4 kDa)

Please check the [product details page](#) for more images. Overall 5 images are available for ABIN7193541.