

Datasheet for ABIN7193542

anti-Glypican 3 antibody (AA 359-554)

5 Images

[Go to Product page](#)

Overview

Quantity:	0.1 mg
Target:	Glypican 3 (GPC3)
Binding Specificity:	AA 359-554
Reactivity:	Human, Rat
Host:	Mouse
Clonality:	Monoclonal
Conjugate:	This Glypican 3 antibody is un-conjugated
Application:	Flow Cytometry (FACS), Western Blotting (WB), ELISA

Product Details

Immunogen:	Purified recombinant fragment of human GPC3 (AA: 359-554) expressed in E. coli.
Clone:	4D5B1
Isotype:	IgG1
Purification:	purified

Target Details

Target:	Glypican 3 (GPC3)
Alternative Name:	GPC3 (GPC3 Products)
Background:	Description: Cell surface heparan sulfate proteoglycans are composed of a membrane-associated protein core substituted with a variable number of heparan sulfate chains. Members

Target Details

of the glypican-related integral membrane proteoglycan family (GRIPS) contain a core protein anchored to the cytoplasmic membrane via a glycosyl phosphatidylinositol linkage. These proteins may play a role in the control of cell division and growth regulation. The protein encoded by this gene can bind to and inhibit the dipeptidyl peptidase activity of CD26, and it can induce apoptosis in certain cell types. Deletion mutations in this gene are associated with Simpson-Golabi-Behmel syndrome, also known as Simpson dysmorphia syndrome. Alternative splicing results in multiple transcript variants.

Aliases: SGB, DGSX, MXR7, SDYS, SGBS, OCI-5, SGBS1, GTR2-2

Molecular Weight:	65.5 kDa
-------------------	----------

Gene ID:	2719
----------	------

Pathways:	Glycosaminoglycan Metabolic Process
-----------	---

Application Details

Application Notes:	WB:1:500 - 1:2000, FCM:1:200 - 1:400, ELISA:1:10000,
--------------------	--

Restrictions:	For Research Use only
---------------	-----------------------

Handling

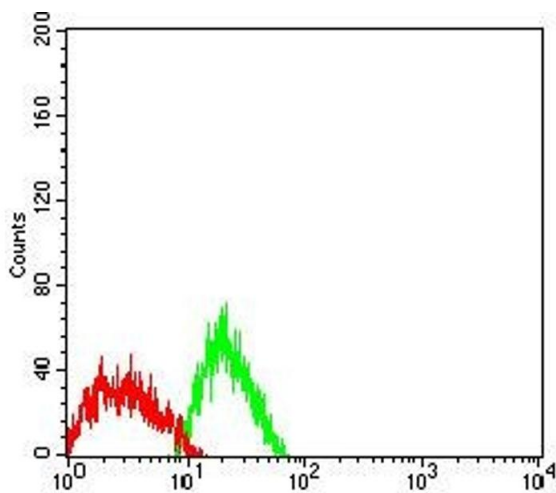
Buffer:	Purified antibody in PBS with 0.05 % sodium azide
---------	---

Preservative:	Sodium azide
---------------	--------------

Precaution of Use:	This product contains Sodium azide: a POISONOUS AND HAZARDOUS SUBSTANCE which should be handled by trained staff only.
--------------------	--

Storage:	4 °C/-20 °C
----------	-------------

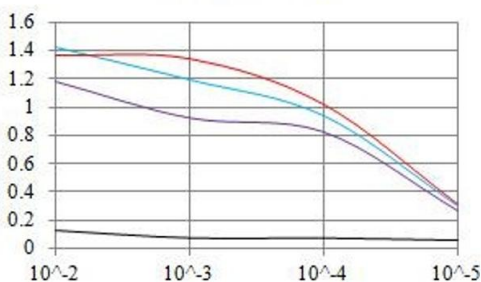
Storage Comment:	4°C, -20°C for long term storage
------------------	----------------------------------



Flow Cytometry

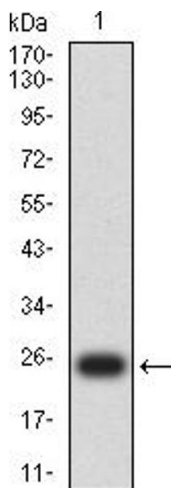
Image 1. Flow cytometric analysis of SK-N-SH cells using GPC3 mouse mAb (green) and negative control (red).

ELISA Result



Serial Dilutions of Antibody

— Control Antigen = 100ng — Antigen = 10ng
— Antigen = 50ng — Antigen = 100ng



ELISA

Image 2. Black line: Control Antigen (100 ng), Purple line: Antigen (10 ng), Blue line: Antigen (50 ng), Red line: Antigen (100 ng)

Western Blotting

Image 3. Western blot analysis using GPC3 mAb against human GPC3 (AA: 359-554) recombinant protein. (Expected MW is 25 kDa)

Please check the [product details page](#) for more images. Overall 5 images are available for ABIN7193542.