

Datasheet for ABIN7193551
anti-MME antibody (AA 52-246)[Go to Product page](#)

4 Images

Overview

Quantity:	0.1 mg
Target:	MME
Binding Specificity:	AA 52-246
Reactivity:	Human
Host:	Mouse
Clonality:	Monoclonal
Application:	Flow Cytometry (FACS), Western Blotting (WB), ELISA

Product Details

Immunogen:	Purified recombinant fragment of human CD10 (AA: 52-246) expressed in E. coli.
Clone:	6D5F2
Isotype:	IgG1
Purification:	purified

Target Details

Target:	MME
Alternative Name:	CD10 (MME Products)
Background:	Description: The protein encoded by this gene is a type II transmembrane glycoprotein and a common acute lymphocytic leukemia antigen that is an important cell surface marker in the diagnosis of human acute lymphocytic leukemia (ALL). The encoded protein is present on leukemic cells of pre-B phenotype, which represent 85 % of cases of ALL. This protein is not

Target Details

restricted to leukemic cells, however, and is found on a variety of normal tissues. The protein is a neutral endopeptidase that cleaves peptides at the amino side of hydrophobic residues and inactivates several peptide hormones including glucagon, enkephalins, substance P, neurotensin, oxytocin, and bradykinin.

Aliases: MME, NEP, SFE, CALLA, CMT2T, SCA43

Molecular Weight: 85.5 kDa

Gene ID: 4311

Pathways: [RTK Signaling](#), [Peptide Hormone Metabolism](#), [Regulation of Systemic Arterial Blood Pressure by Hormones](#), [Smooth Muscle Cell Migration](#)

Application Details

Application Notes: WB:1:500 - 1:2000, FCM:1:200 - 1:400, ELISA:1:10000,

Restrictions: For Research Use only

Handling

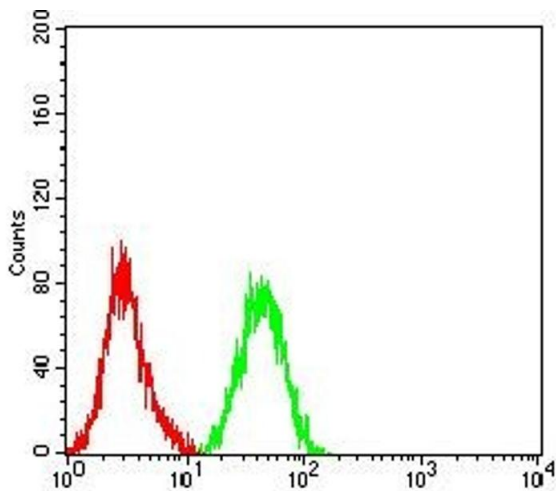
Buffer: Purified antibody in PBS with 0.05 % sodium azide

Preservative: Sodium azide

Precaution of Use: This product contains Sodium azide: a POISONOUS AND HAZARDOUS SUBSTANCE which should be handled by trained staff only.

Storage: 4 °C/-20 °C

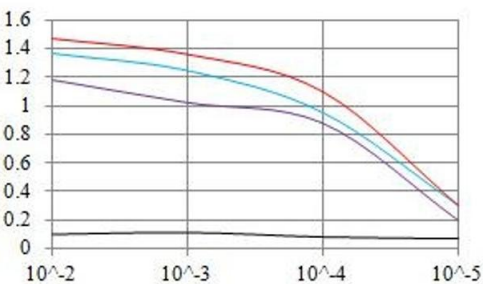
Storage Comment: 4°C, -20°C for long term storage



Flow Cytometry

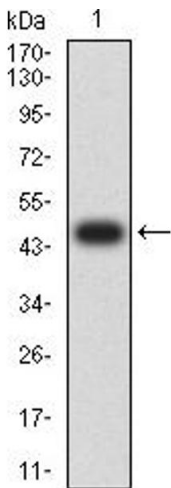
Image 1. Flow cytometric analysis of HL-60 cells using CD10 mouse mAb (green) and negative control (red).

O.D. ELISA Result



Serial Dilutions of Antibody

— Control Antigen = 100ng — Antigen = 10ng
— Antigen = 50ng — Antigen = 100ng



ELISA

Image 2. Black line: Control Antigen (100 ng),Purple line: Antigen (10 ng), Blue line: Antigen (50 ng), Red line:Antigen (100 ng)

Western Blotting

Image 3. Western blot analysis using CD10 mAb against human CD10 (AA: 52-246) recombinant protein. (Expected MW is 47.4 kDa)

Please check the [product details page](#) for more images. Overall 4 images are available for ABIN7193551.