

Datasheet for ABIN7193563
anti-PD-1 antibody (AA 192-288)

5 Images

[Go to Product page](#)

Overview

Quantity:	0.1 mg
Target:	PD-1 (PDCD1)
Binding Specificity:	AA 192-288
Reactivity:	Human
Host:	Mouse
Clonality:	Monoclonal
Conjugate:	This PD-1 antibody is un-conjugated
Application:	Flow Cytometry (FACS), Western Blotting (WB), ELISA

Product Details

Immunogen:	Purified recombinant fragment of human PD1 (AA: 192-288) expressed in E. coli.
Clone:	3B3D9
Isotype:	IgG2b
Purification:	purified

Target Details

Target:	PD-1 (PDCD1)
Alternative Name:	PD1 (PDCD1 Products)
Background:	Description: This gene encodes a cell surface membrane protein of the immunoglobulin superfamily. This protein is expressed in pro-B-cells and is thought to play a role in their

Target Details

differentiation. In mice, expression of this gene is induced in the thymus when anti-CD3 antibodies are injected and large numbers of thymocytes undergo apoptosis. Mice deficient for this gene bred on a BALB/c background developed dilated cardiomyopathy and died from congestive heart failure. These studies suggest that this gene product may also be important in T cell function and contribute to the prevention of autoimmune diseases.

Aliases: PDCD1, PD-1, CD279, SLEB2, hPD-1, hPD-I, hSLE1

Molecular Weight:	31.6 kDa
-------------------	----------

Gene ID:	5133
----------	------

Pathways:	Cancer Immune Checkpoints
-----------	---

Application Details

Application Notes:	WB:1:500 - 1:2000, FCM:1:200 - 1:400, ELISA:1:10000,
--------------------	--

Restrictions:	For Research Use only
---------------	-----------------------

Handling

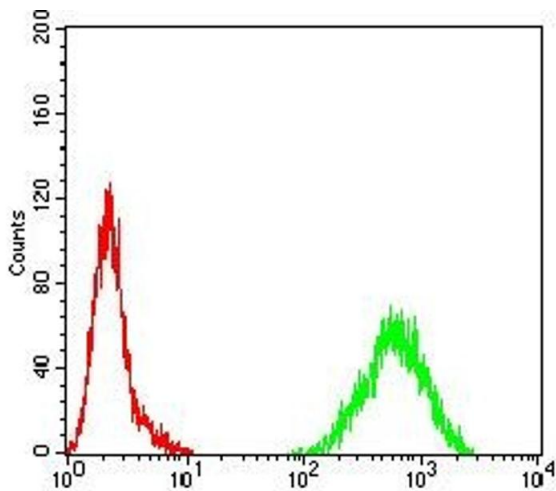
Buffer:	Purified antibody in PBS with 0.05 % sodium azide
---------	---

Preservative:	Sodium azide
---------------	--------------

Precaution of Use:	This product contains Sodium azide: a POISONOUS AND HAZARDOUS SUBSTANCE which should be handled by trained staff only.
--------------------	--

Storage:	4 °C/-20 °C
----------	-------------

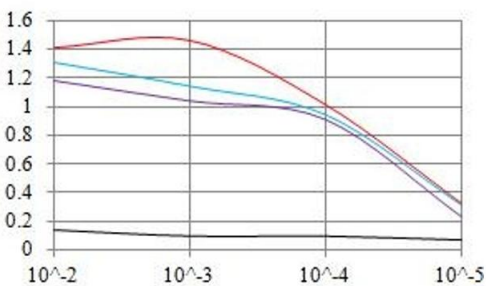
Storage Comment:	4°C, -20°C for long term storage
------------------	----------------------------------



Flow Cytometry

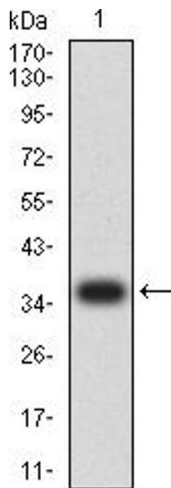
Image 1. Flow cytometric analysis of Hela cells using PD1 mouse mAb (green) and negative control (red).

ELISA Result



Serial Dilutions of Antibody

— Control Antigen = 100ng — Antigen = 10ng
— Antigen = 50ng — Antigen = 100ng



ELISA

Image 2. Black line: Control Antigen (100 ng), Purple line: Antigen (10 ng), Blue line: Antigen (50 ng), Red line: Antigen (100 ng)

Western Blotting

Image 3. Western blot analysis using PD1 mAb against human PD1 (AA: 192-288) recombinant protein. (Expected MW is 36.5 kDa)

Please check the [product details page](#) for more images. Overall 5 images are available for ABIN7193563.