

Datasheet for ABIN7193564

anti-Topoisomerase II alpha antibody (AA 1100-1530)

7 Images

[Go to Product page](#)

Overview

Quantity:	0.1 mg
Target:	Topoisomerase II alpha (TOP2A)
Binding Specificity:	AA 1100-1530
Reactivity:	Human, Rat
Host:	Mouse
Clonality:	Monoclonal
Application:	Western Blotting (WB), ELISA, Flow Cytometry (FACS), Immunocytochemistry (ICC)

Product Details

Immunogen:	Purified recombinant fragment of human TOP2A (AA: 1100-1530) expressed in E. coli.
Clone:	6C12G12
Isotype:	IgG2b
Purification:	purified

Target Details

Target:	Topoisomerase II alpha (TOP2A)
Alternative Name:	TOP2A (TOP2A Products)
Background:	Description: This gene encodes a DNA topoisomerase, an enzyme that controls and alters the topologic states of DNA during transcription. This nuclear enzyme is involved in processes such as chromosome condensation, chromatid separation, and the relief of torsional stress that occurs during DNA transcription and replication. It catalyzes the transient breaking and

Target Details

rejoining of two strands of duplex DNA which allows the strands to pass through one another, thus altering the topology of DNA. Two forms of this enzyme exist as likely products of a gene duplication event. The gene encoding this form, alpha, is localized to chromosome 17 and the beta gene is localized to chromosome 3. The gene encoding this enzyme functions as the target for several anticancer agents and a variety of mutations in this gene have been associated with the development of drug resistance. Reduced activity of this enzyme may also play a role in ataxia-telangiectasia.

Aliases: TOP2, TP2A

Molecular Weight:	174.4 kDa
-------------------	-----------

Gene ID:	7153
----------	------

Pathways:	Cell Division Cycle , Mitotic G1-G1/S Phases
-----------	--

Application Details

Application Notes:	WB:1:500 - 1:2000, ICC:1:100 - 1:500, FCM:1:200 - 1:400, ELISA:1:10000,
--------------------	---

Restrictions:	For Research Use only
---------------	-----------------------

Handling

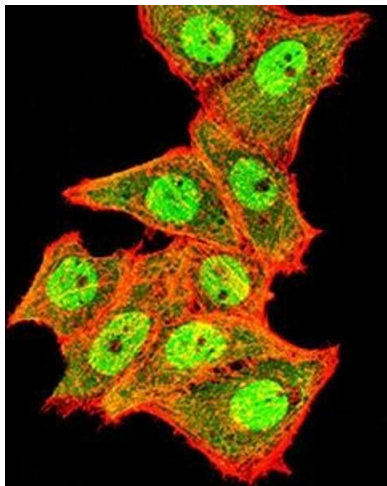
Buffer:	Purified antibody in PBS with 0.05 % sodium azide
---------	---

Preservative:	Sodium azide
---------------	--------------

Precaution of Use:	This product contains Sodium azide: a POISONOUS AND HAZARDOUS SUBSTANCE which should be handled by trained staff only.
--------------------	--

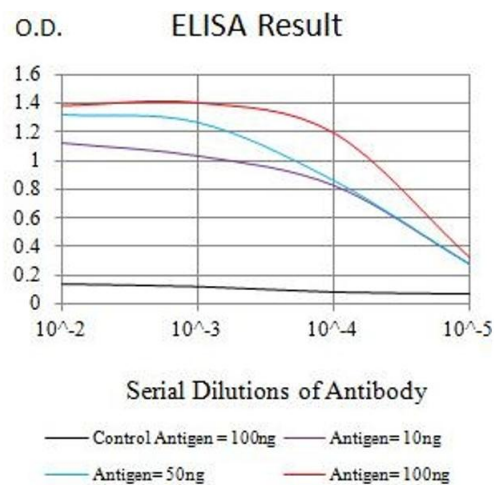
Storage:	4 °C/-20 °C
----------	-------------

Storage Comment:	4°C, -20°C for long term storage
------------------	----------------------------------



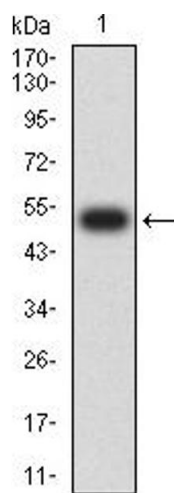
Immunofluorescence

Image 1. Immunofluorescence analysis of HeLa cells using TOP2A mouse mAb (green). Blue: DRAQ5 fluorescent DNA dye. Red: Actin filaments have been labeled with Alexa Fluor- 555 phalloidin. Secondary antibody from Fisher (Cat#: 35503)



ELISA

Image 2. Black line: Control Antigen (100 ng),Purple line: Antigen (10 ng), Blue line: Antigen (50 ng), Red line:Antigen (100 ng)



Western Blotting

Image 3. Western blot analysis using TOP2A mAb against human TOP2A (AA: 1100-1530) recombinant protein. (Expected MW is 51.2 kDa)

Please check the [product details page](#) for more images. Overall 7 images are available for ABIN7193564.