

Datasheet for ABIN7193565

**anti-CCR6 antibody**

5 Images

[Go to Product page](#)

## Overview

Quantity:	0.1 mg
Target:	CCR6
Reactivity:	Human
Host:	Mouse
Clonality:	Monoclonal
Conjugate:	This CCR6 antibody is un-conjugated
Application:	ELISA, Western Blotting (WB), Flow Cytometry (FACS)

## Product Details

Immunogen:	Purified recombinant fragment of human CD196 expressed in E. coli.
Clone:	7C6D9
Isotype:	IgG2a
Purification:	purified

## Target Details

Target:	CCR6
Alternative Name:	CD196 ( <a href="#">CCR6 Products</a> )
Background:	Description: This gene encodes a member of the beta chemokine receptor family, which is predicted to be a seven transmembrane protein similar to G protein-coupled receptors. The gene is preferentially expressed by immature dendritic cells and memory T cells. The ligand of this receptor is macrophage inflammatory protein 3 alpha (MIP-3 alpha). This receptor has

## Target Details

been shown to be important for B-lineage maturation and antigen-driven B-cell differentiation, and it may regulate the migration and recruitment of dendritic and T cells during inflammatory and immunological responses. Alternatively spliced transcript variants that encode the same protein have been described for this gene.

Aliases: CCR6, BN-1, DCR2, DRY6, CCR-6, CKRL3, GPR29, CKR-L3, CMKBR6, GPRCY4, STRL22, CC-CKR-6, C-C CKR-6

Molecular Weight:	42.5 kDa
-------------------	----------

Gene ID:	1235
----------	------

Pathways:	<a href="#">cAMP Metabolic Process</a>
-----------	--

## Application Details

Application Notes:	WB:1:500 - 1:2000, FCM:1:200 - 1:400, ELISA:1:10000,
--------------------	--

Restrictions:	For Research Use only
---------------	-----------------------

## Handling

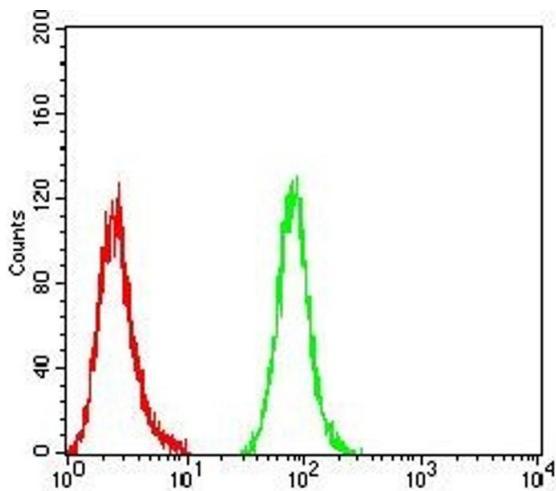
Buffer:	Purified antibody in PBS with 0.05 % sodium azide
---------	---

Preservative:	Sodium azide
---------------	--------------

Precaution of Use:	This product contains Sodium azide: a POISONOUS AND HAZARDOUS SUBSTANCE which should be handled by trained staff only.
--------------------	--

Storage:	4 °C/-20 °C
----------	-------------

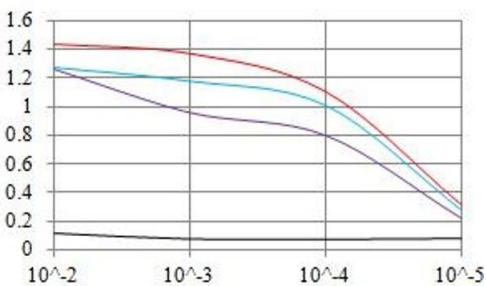
Storage Comment:	4°C, -20°C for long term storage
------------------	----------------------------------



Flow Cytometry

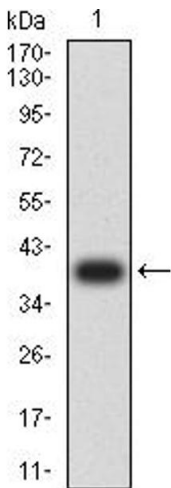
**Image 1.** Flow cytometric analysis of THP-1 cells using CD196 mouse mAb (green) and negative control (red).

O.D. ELISA Result



Serial Dilutions of Antibody

— Control Antigen = 100ng — Antigen = 10ng  
— Antigen = 50ng — Antigen = 100ng



ELISA

**Image 2.** Black line: Control Antigen (100 ng), Purple line: Antigen (10 ng), Blue line: Antigen (50 ng), Red line: Antigen (100 ng)

Western Blotting

**Image 3.** Western blot analysis using CD196 mAb against human CD196 recombinant protein. (Expected MW is 39.3 kDa)

Please check the [product details page](#) for more images. Overall 5 images are available for ABIN7193565.