

Datasheet for ABIN7193569  
**anti-CD3D antibody (AA 127-171)**

## 3 Images

[Go to Product page](#)

## Overview

Quantity:	0.1 mg
Target:	CD3D
Binding Specificity:	AA 127-171
Reactivity:	Human
Host:	Mouse
Clonality:	Monoclonal
Application:	Western Blotting (WB), ELISA

## Product Details

Immunogen:	Purified recombinant fragment of human CD3D (AA: 127-171) expressed in E. coli.
Clone:	1H12G5
Isotype:	IgG1
Purification:	purified

## Target Details

Target:	CD3D
Alternative Name:	CD3D ( <a href="#">CD3D Products</a> )
Background:	Description: The protein encoded by this gene is part of the T-cell receptor/CD3 complex (TCR/CD3 complex) and is involved in T-cell development and signal transduction. The encoded membrane protein represents the delta subunit of the CD3 complex, and along with four other CD3 subunits, binds either TCR alpha/beta or TCR gamma/delta to form the

## Target Details

TCR/CD3 complex on the surface of T-cells. Defects in this gene are a cause of severe combined immunodeficiency autosomal recessive T-cell-negative/B-cell-positive/NK-cell-positive (SCIDBNK). Two transcript variants encoding different isoforms have been found for this gene. Other variants may also exist, but the full-length natures of their transcripts has yet to be defined.

Aliases: T3D, IMD19, CD3-DELTA

Molecular Weight: 19 kDa

Gene ID: 915

Pathways: [TCR Signaling](#), [CXCR4-mediated Signaling Events](#)

## Application Details

Application Notes: WB:1:500 - 1:2000, ELISA:1:10000,

Restrictions: For Research Use only

## Handling

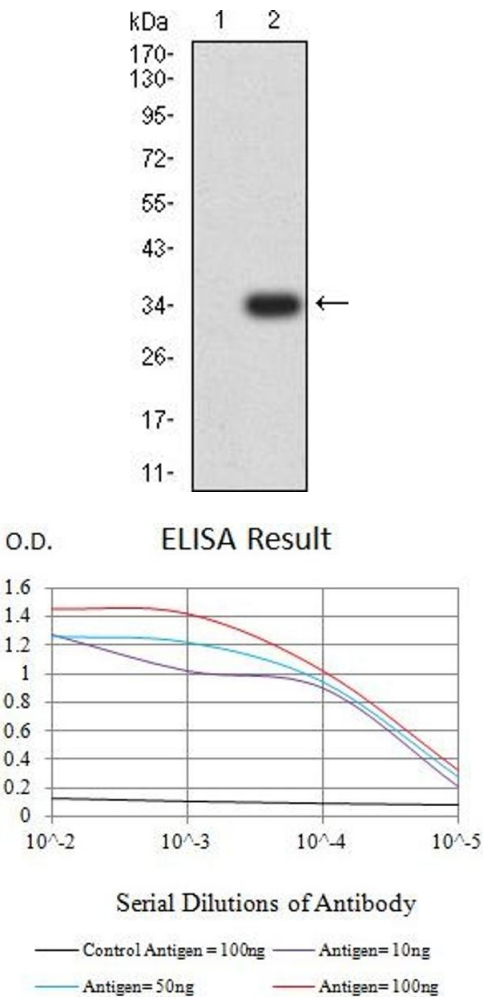
Buffer: Purified antibody in PBS with 0.05 % sodium azide

Preservative: Sodium azide

Precaution of Use: This product contains Sodium azide: a POISONOUS AND HAZARDOUS SUBSTANCE which should be handled by trained staff only.

Storage: 4 °C/-20 °C

Storage Comment: 4°C, -20°C for long term storage

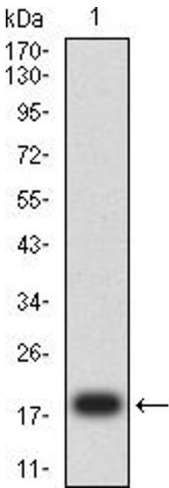


**Western Blotting**

**Image 1.** Western blot analysis using CD3D mAb against HEK293 (1) and CD3D (AA: 127-171)-hlgGFc transfected HEK293 (2) cell lysate.

**ELISA**

**Image 2.** Black line: Control Antigen (100 ng),Purple line: Antigen (10 ng), Blue line: Antigen (50 ng), Red line:Antigen (100 ng)



**Western Blotting**

**Image 3.** Western blot analysis using CD3D mAb against human CD3D (AA: 127-171) recombinant protein. (Expected MW is 18.6 kDa)