

Datasheet for ABIN7193571

**anti-Smooth Muscle Actin antibody (AA 2-124)**

## 6 Images

[Go to Product page](#)

## Overview

Quantity:	0.1 mg
Target:	Smooth Muscle Actin (ACTA2)
Binding Specificity:	AA 2-124
Reactivity:	Human, Rat, Mouse
Host:	Mouse
Clonality:	Monoclonal
Conjugate:	This Smooth Muscle Actin antibody is un-conjugated
Application:	Western Blotting (WB), Immunohistochemistry (IHC), Flow Cytometry (FACS), ELISA

## Product Details

Immunogen:	Purified recombinant fragment of human ACTA2 (AA: 2-124) expressed in E. coli.
Clone:	5C1H11
Isotype:	IgG1
Purification:	purified

## Target Details

Target:	Smooth Muscle Actin (ACTA2)
Alternative Name:	ACTA2 ( <a href="#">ACTA2 Products</a> )
Background:	Description: This gene encodes one of six different actin proteins. Actins are highly conserved proteins that are involved in cell motility, structure, integrity, and intercellular signaling. The

## Target Details

encoded protein is a smooth muscle actin that is involved in vascular contractility and blood pressure homeostasis. Mutations in this gene cause a variety of vascular diseases, such as thoracic aortic disease, coronary artery disease, stroke, and Moyamoya disease, as well as multisystemic smooth muscle dysfunction syndrome.

Aliases: ACTSA

Molecular Weight:	42 kDa
Gene ID:	59
Pathways:	<a href="#">Myometrial Relaxation and Contraction, Skeletal Muscle Fiber Development</a>

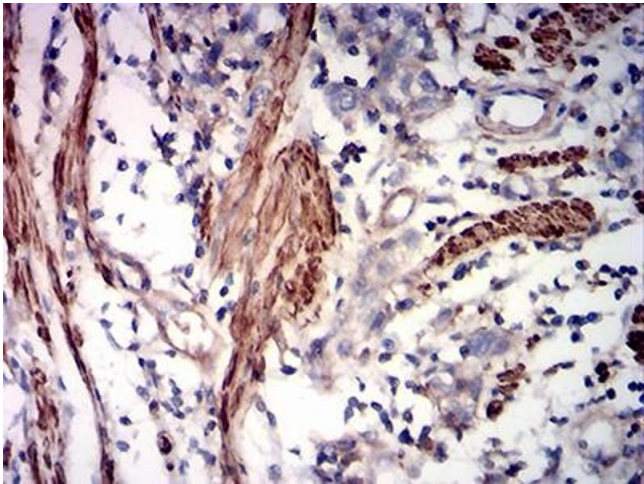
## Application Details

Application Notes:	WB:1:500 - 1:2000, IHC:1:200 - 1:1000, FCM:1:200 - 1:400, ELISA:1:10000,
Restrictions:	For Research Use only

## Handling

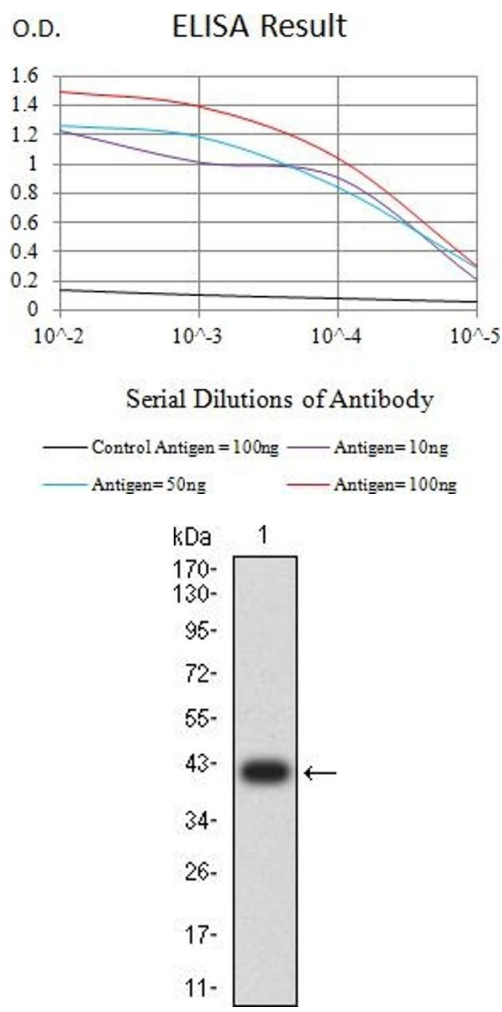
Buffer:	Purified antibody in PBS with 0.05 % sodium azide
Preservative:	Sodium azide
Precaution of Use:	This product contains Sodium azide: a POISONOUS AND HAZARDOUS SUBSTANCE which should be handled by trained staff only.
Storage:	4 °C/-20 °C
Storage Comment:	4°C, -20°C for long term storage

## Images



### Immunohistochemistry

**Image 1.** Immunohistochemical analysis of paraffin-embedded rectum cancer tissues using ACTA2 mouse mAb with DAB staining.



### ELISA

**Image 2.** Black line: Control Antigen (100 ng),Purple line: Antigen (10 ng), Blue line: Antigen (50 ng), Red line:Antigen (100 ng)

### Western Blotting

**Image 3.** Western blot analysis using ACTA2 mAb against human ACTA2 (AA: 2-124) recombinant protein. (Expected MW is 40 kDa)

Please check the [product details page](#) for more images. Overall 6 images are available for ABIN7193571.