

Datasheet for ABIN7193586
anti-SARS-CoV-2 antibody[Go to Product page](#)

3 Images

Overview

Quantity:	0.1 mg
Target:	SARS-CoV-2
Reactivity:	Human
Host:	Mouse
Clonality:	Monoclonal
Application:	ELISA, Western Blotting (WB)

Product Details

Immunogen:	Immunogen Purified recombinant fragment of SARS RBD protein.
Clone:	CR3022
Isotype:	IgG
Purification:	purified

Target Details

Target:	SARS-CoV-2
Alternative Name:	SARS-CoV-2 (SARS-CoV-2 Products)
Target Type:	Virus
Background:	Description: The RBD protein encoded by S gene (part of MN908947.2) is a receptor-binding protein of coronavirus that was shown to bind ACE-2 protein. RBD protein is highly homologous to SARS RBD protein. Aliases: S1

Target Details

Molecular Weight: 23.7kD

Application Details

Application Notes: WB:1:1000, ELISA:1:200,

Restrictions: For Research Use only

Handling

Buffer: Purified antibody in PBS with 0.05 % sodium azide

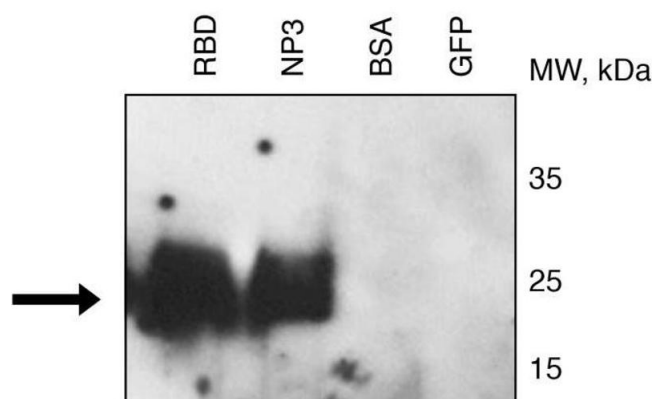
Preservative: Sodium azide

Precaution of Use: This product contains Sodium azide: a POISONOUS AND HAZARDOUS SUBSTANCE which should be handled by trained staff only.

Storage: 4 °C/-20 °C

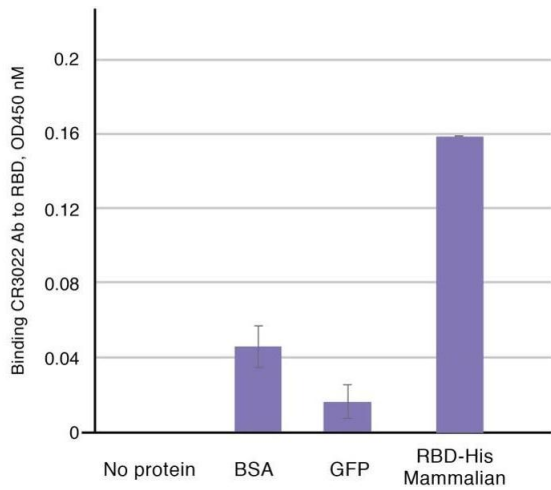
Storage Comment: 4°C, -20°C for long term storage

Images



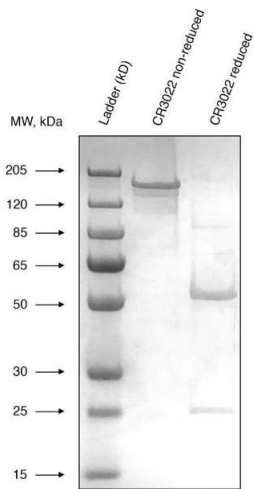
Western Blotting

Image 1. Binding of CR3022 to RBD and NP3 (fragment 3) of 2019nCoV proteins by Western blotting. RBD- and terminal fragment of Nucleocapsid protein (NP3) were loaded on SDS gel and BSA and GFP proteins as negative controls. Western blotting was done with CR3022 antibody 1:1000 dilution as primary antibody, and with anti-human Fc secondary antibody 1:10,000 dilution.



ELISA

Image 2. Binding of CR3022 to RBD by ELISA. For ELISA with BSA, GFP or RBD-His mammalian proteins CR3022 Ab was 1:200 dilution, secondary anti- human Fc-HRP 1:5000 dilution was used.



Western Blotting

Image 3. Expression of recombinant CR3022 antibody