

Datasheet for ABIN7193587
anti-MLH1 antibody (AA 381-483)

7 Images

[Go to Product page](#)

Overview

Quantity:	0.1 mg
Target:	MLH1
Binding Specificity:	AA 381-483
Reactivity:	Human
Host:	Mouse
Clonality:	Monoclonal
Application:	Western Blotting (WB), ELISA, Immunohistochemistry (IHC), Flow Cytometry (FACS)

Product Details

Immunogen:	Purified recombinant fragment of human MLH1 (AA:381-483) expressed in E. coli.
Clone:	7A7C8
Isotype:	IgG1
Purification:	purified

Target Details

Target:	MLH1
Alternative Name:	MLH1 (MLH1 Products)
Background:	Description: The protein encoded by this gene can heterodimerize with mismatch repair endonuclease PMS2 to form MutL alpha, part of the DNA mismatch repair system. When MutL alpha is bound by MutS beta and some accessory proteins, the PMS2 subunit of MutL alpha introduces a single-strand break near DNA mismatches, providing an entry point for

Target Details

exonuclease degradation. The encoded protein is also involved in DNA damage signaling and can heterodimerize with DNA mismatch repair protein MLH3 to form MutL gamma, which is involved in meiosis. This gene was identified as a locus frequently mutated in hereditary nonpolyposis colon cancer (HNPCC). [provided by RefSeq, Aug 2017]

Aliases: FCC2, COCA2, HNPCC, hMLH1, HNPCC2

Molecular Weight: 84.6 kDa

Gene ID: 4292

Pathways: [DNA Damage Repair](#), [Production of Molecular Mediator of Immune Response](#)

Application Details

Application Notes: WB:1:500 - 1:2000, IHC:1:200 - 1:1000, FCM:1:200 - 1:400, ELISA:1:10000,

Restrictions: For Research Use only

Handling

Buffer: Purified antibody in PBS with 0.05 % sodium azide

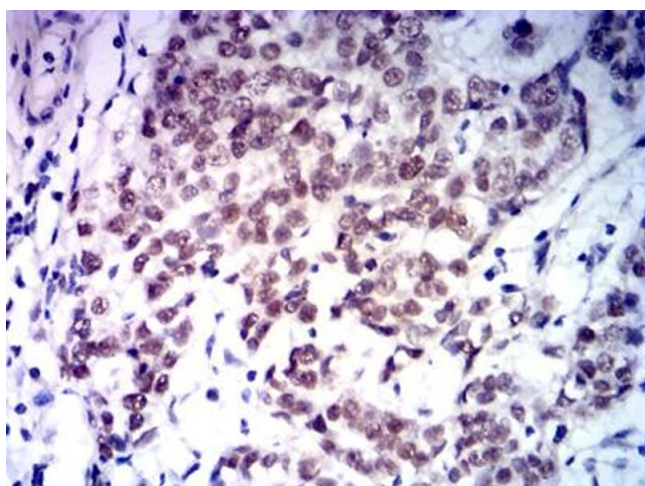
Preservative: Sodium azide

Precaution of Use: This product contains Sodium azide: a POISONOUS AND HAZARDOUS SUBSTANCE which should be handled by trained staff only.

Storage: 4 °C/-20 °C

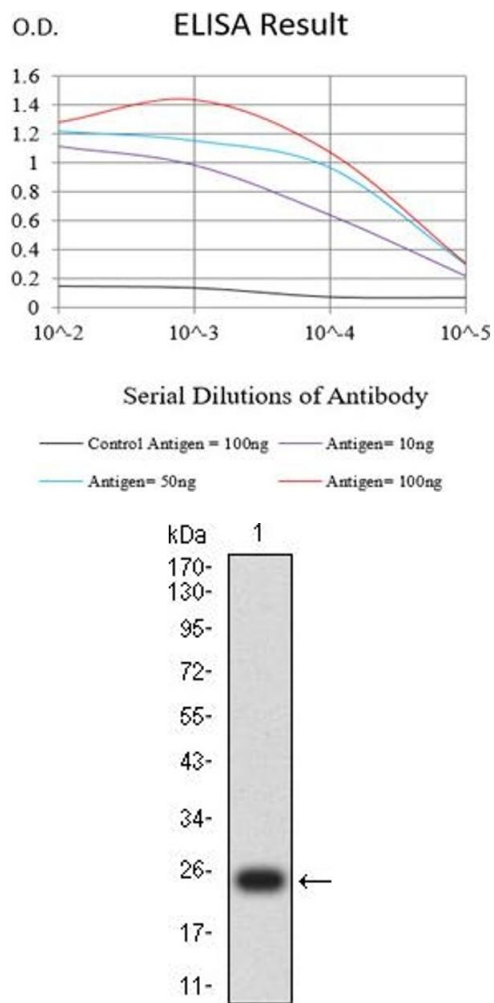
Storage Comment: 4°C, -20°C for long term storage

Images



Immunohistochemistry

Image 1. Immunohistochemical analysis of paraffin-embedded bladder cancer tissues using MLH1 mouse mAb with DAB staining.



ELISA

Image 2. Black line: Control Antigen (100 ng),Purple line: Antigen (10 ng), Blue line: Antigen (50 ng), Red line:Antigen (100 ng)

Western Blotting

Image 3. Western blot analysis using MLH1 mAb against human MLH1 (AA: 381-483) recombinant protein. (Expected MW is 25.1 kDa)

Please check the [product details page](#) for more images. Overall 7 images are available for ABIN7193587.