

Datasheet for ABIN7193589
anti-Cyclin E1 antibody (AA 1-100)

5 Images

[Go to Product page](#)

Overview

Quantity:	0.1 mg
Target:	Cyclin E1 (CCNE1)
Binding Specificity:	AA 1-100
Reactivity:	Human
Host:	Mouse
Clonality:	Monoclonal
Application:	Western Blotting (WB), Immunohistochemistry (IHC), ELISA, Flow Cytometry (FACS)

Product Details

Immunogen:	Purified recombinant fragment of human CCNE1 (AA: 1-100) expressed in E. coli.
Clone:	1C8D4
Isotype:	IgG1
Purification:	purified

Target Details

Target:	Cyclin E1 (CCNE1)
Alternative Name:	CCNE1 (CCNE1 Products)
Background:	Description: The protein encoded by this gene belongs to the highly conserved cyclin family, whose members are characterized by a dramatic periodicity in protein abundance through the cell cycle. Cyclins function as regulators of CDK kinases. Different cyclins exhibit distinct expression and degradation patterns which contribute to the temporal coordination of each

Target Details

mitotic event. This cyclin forms a complex with and functions as a regulatory subunit of CDK2, whose activity is required for cell cycle G1/S transition. This protein accumulates at the G1-S phase boundary and is degraded as cells progress through S phase. Overexpression of this gene has been observed in many tumors, which results in chromosome instability, and thus may contribute to tumorigenesis. This protein was found to associate with, and be involved in, the phosphorylation of NPAT protein (nuclear protein mapped to the ATM locus), which participates in cell-cycle regulated histone gene expression and plays a critical role in promoting cell-cycle progression in the absence of pRB. [provided by RefSeq, Apr 2016]

Aliases: CCNE, Pccne1

Molecular Weight: 47 kDa

Gene ID: 898

Pathways: [Cell Division Cycle](#), [Intracellular Steroid Hormone Receptor Signaling Pathway](#), [Nuclear Hormone Receptor Binding](#), [Mitotic G1-G1/S Phases](#)

Application Details

Application Notes: WB:1:500 - 1:2000, IHC:1:200 - 1:1000, FCM:1:200 - 1:400, ELISA:1:10000,

Restrictions: For Research Use only

Handling

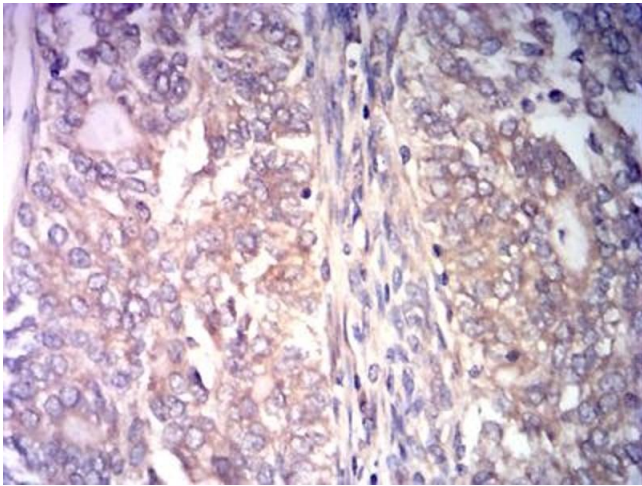
Buffer: Purified antibody in PBS with 0.05 % sodium azide

Preservative: Sodium azide

Precaution of Use: This product contains Sodium azide: a POISONOUS AND HAZARDOUS SUBSTANCE which should be handled by trained staff only.

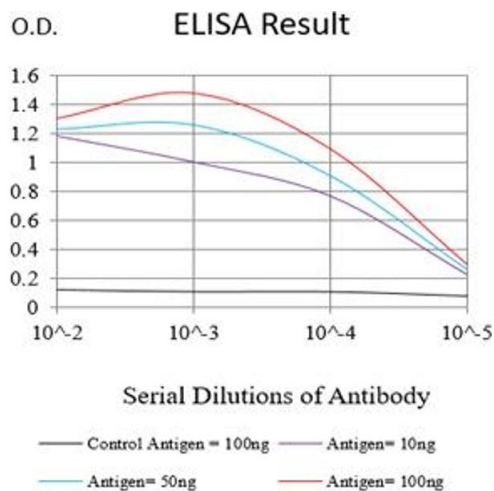
Storage: 4 °C/-20 °C

Storage Comment: 4°C, -20°C for long term storage



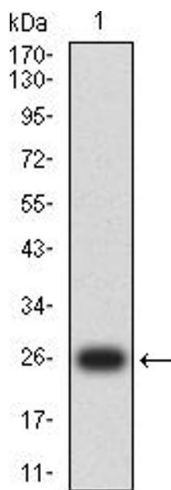
Immunohistochemistry

Image 1. Immunohistochemical analysis of paraffin-embedded cervical cancer tissues using CCNE1 mouse mAb with DAB staining.



ELISA

Image 2. Black line: Control Antigen (100 ng),Purple line: Antigen (10 ng), Blue line: Antigen (50 ng), Red line:Antigen (100 ng)



Western Blotting

Image 3. Western blot analysis using CCNE1 mAb against human CCNE1 (AA: 1-100) recombinant protein. (Expected MW is 26 kDa)

Please check the [product details page](#) for more images. Overall 5 images are available for ABIN7193589.