



[Go to Product page](#)

Datasheet for ABIN7193595  
**anti-SAA1 antibody (AA 19-212)**

5 Images

### Overview

Quantity:	0.1 mg
Target:	SAA1
Binding Specificity:	AA 19-212
Reactivity:	Human
Host:	Mouse
Clonality:	Monoclonal
Conjugate:	This SAA1 antibody is un-conjugated
Application:	ELISA, Western Blotting (WB), Immunohistochemistry (IHC), Flow Cytometry (FACS)

### Product Details

Immunogen:	Purified recombinant fragment of human SAA1 (AA: 19-212) expressed in E. coli.
Clone:	1A12E5
Isotype:	IgG1
Purification:	purified

### Target Details

Target:	SAA1
Alternative Name:	SAA1 ( <a href="#">SAA1 Products</a> )
Background:	Description: This gene encodes a member of the serum amyloid A family of apolipoproteins. The encoded preproprotein is proteolytically processed to generate the mature protein. This

## Target Details

---

protein is a major acute phase protein that is highly expressed in response to inflammation and tissue injury. This protein also plays an important role in HDL metabolism and cholesterol homeostasis. High levels of this protein are associated with chronic inflammatory diseases including atherosclerosis, rheumatoid arthritis, Alzheimer's disease and Crohn's disease. This protein may also be a potential biomarker for certain tumors. Alternate splicing results in multiple transcript variants that encode the same protein. A pseudogene of this gene is found on chromosome 11. [provided by RefSeq, Feb 2016]

Aliases: SAA, PIG4, SAA2, TP53I4

---

Molecular Weight: 13.5 kDa

---

Gene ID: 6288

---

Pathways: [Toll-Like Receptors Cascades](#)

## Application Details

---

Application Notes: WB:1:500 - 1:2000, IHC:1:200 - 1:1000, FCM:1:200 - 1:400, ELISA:1:10000,

---

Restrictions: For Research Use only

## Handling

---

Buffer: Purified antibody in PBS with 0.05 % sodium azide

---

Preservative: Sodium azide

---

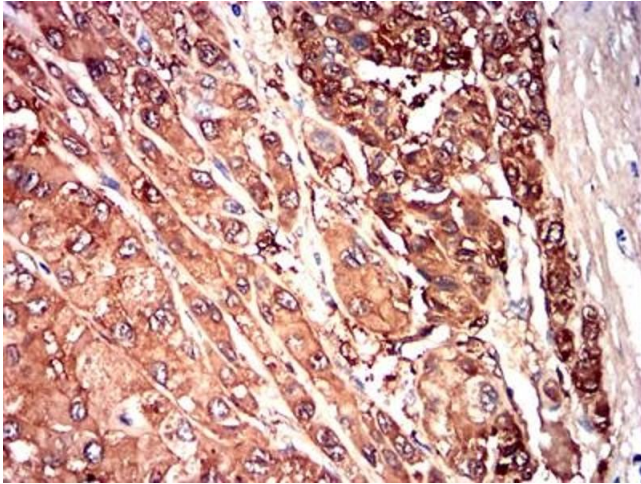
Precaution of Use: This product contains Sodium azide: a POISONOUS AND HAZARDOUS SUBSTANCE which should be handled by trained staff only.

---

Storage: 4 °C/-20 °C

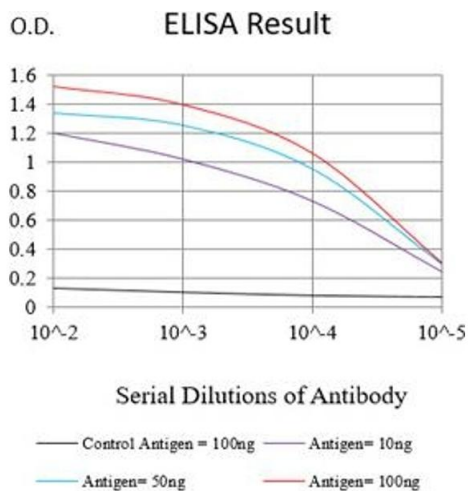
---

Storage Comment: 4°C, -20°C for long term storage



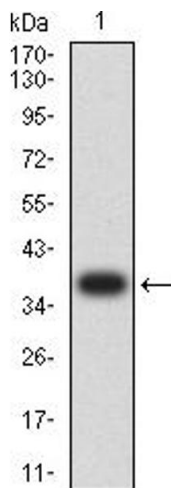
### Immunohistochemistry

**Image 1.** Immunohistochemical analysis of paraffin-embedded liver cancer tissues using SAA1 mouse mAb with DAB staining.



### ELISA

**Image 2.** Black line: Control Antigen (100 ng), Purple line: Antigen (10 ng), Blue line: Antigen (50 ng), Red line: Antigen (100 ng)



### Western Blotting

**Image 3.** Western blot analysis using SAA1 mAb against human SAA1 (AA: 19-212) recombinant protein. (Expected MW is 37.6 kDa)

Please check the [product details page](#) for more images. Overall 5 images are available for ABIN7193595.