



[Go to Product page](#)

Datasheet for ABIN7193599

anti-ACTH antibody

4 Images

Overview

| | |
|--------------|---|
| Quantity: | 0.1 mg |
| Target: | ACTH |
| Reactivity: | Human |
| Host: | Mouse |
| Clonality: | Monoclonal |
| Conjugate: | This ACTH antibody is un-conjugated |
| Application: | Flow Cytometry (FACS), ELISA, Western Blotting (WB) |

Product Details

| | |
|---------------|---|
| Immunogen: | Purified recombinant fragment of human ACTH expressed in E. coli. |
| Clone: | 1A9C6 |
| Isotype: | IgG1 |
| Purification: | purified |

Target Details

| | |
|-------------------|--|
| Target: | ACTH |
| Alternative Name: | ACTH (ACTH Products) |
| Background: | Description: This gene encodes a preproprotein that undergoes extensive, tissue-specific, post-translational processing via cleavage by subtilisin-like enzymes known as prohormone convertases. There are eight potential cleavage sites within the preproprotein and, depending on tissue type and the available convertases, processing may yield as many as ten biologically |

Target Details

active peptides involved in diverse cellular functions. The encoded protein is synthesized mainly in corticotroph cells of the anterior pituitary where four cleavage sites are used, adrenocorticotrophin, essential for normal steroidogenesis and the maintenance of normal adrenal weight, and lipotropin beta are the major end products. In other tissues, including the hypothalamus, placenta, and epithelium, all cleavage sites may be used, giving rise to peptides with roles in pain and energy homeostasis, melanocyte stimulation, and immune modulation. These include several distinct melanotropins, lipotropins, and endorphins that are contained within the adrenocorticotrophin and beta-lipotropin peptides. The antimicrobial melanotropin alpha peptide exhibits antibacterial and antifungal activity. Mutations in this gene have been associated with early onset obesity, adrenal insufficiency, and red hair pigmentation. Alternatively spliced transcript variants encoding the same protein have been described.

Aliases: POMC, LPH, MSH, NPP, POC, CLIP, OBAIRH

Molecular Weight: 29.4 kDa

Gene ID: 5443

Pathways: [Metabolism of Steroid Hormones and Vitamin D](#), [Peptide Hormone Metabolism](#), [Hormone Activity](#)

Application Details

Application Notes: WB:1:500 - 1:2000, FCM:1:200 - 1:400, ELISA:1:10000,

Restrictions: For Research Use only

Handling

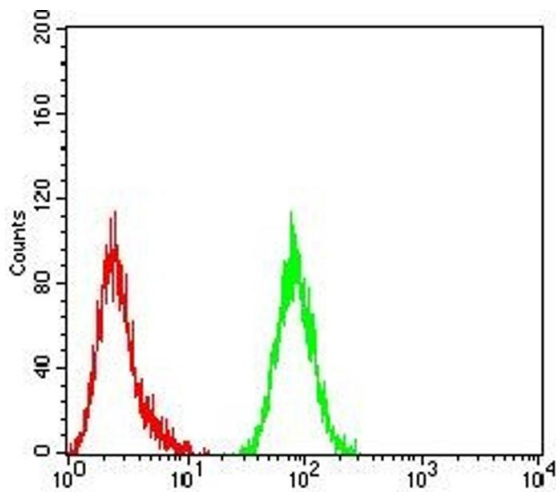
Buffer: Purified antibody in PBS with 0.05 % sodium azide

Preservative: Sodium azide

Precaution of Use: This product contains Sodium azide: a POISONOUS AND HAZARDOUS SUBSTANCE which should be handled by trained staff only.

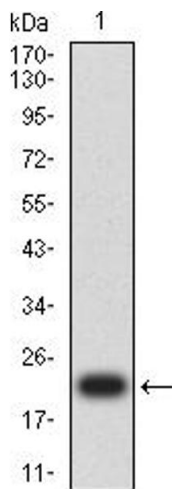
Storage: 4 °C/-20 °C

Storage Comment: 4°C, -20°C for long term storage



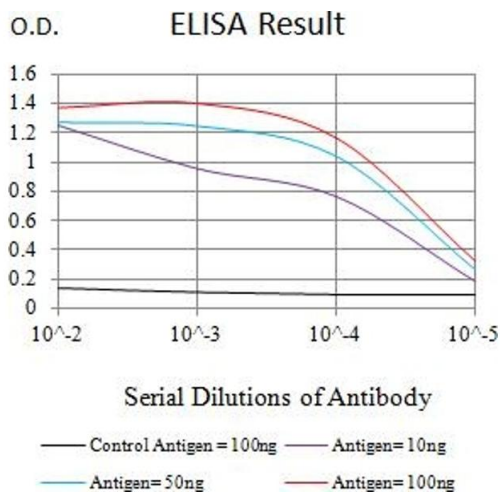
Flow Cytometry

Image 1. Flow cytometric analysis of Hela cells using ACTH mouse mAb (green) and negative control (red).



Western Blotting

Image 2. Western blot analysis using ACTH mAb against human ACTH recombinant protein. (Expected MW is 21.9 kDa)



ELISA

Image 3. Black line: Control Antigen (100 ng), Purple line: Antigen (10 ng), Blue line: Antigen (50 ng), Red line: Antigen (100 ng)

Please check the [product details page](#) for more images. Overall 4 images are available for ABIN7193599.