

Datasheet for ABIN7193605
anti-GSTP1 antibody (AA 2-210)

8 Images

[Go to Product page](#)

Overview

Quantity:	0.1 mg
Target:	GSTP1
Binding Specificity:	AA 2-210
Reactivity:	Human
Host:	Mouse
Clonality:	Monoclonal
Conjugate:	This GSTP1 antibody is un-conjugated
Application:	Western Blotting (WB), ELISA, Immunohistochemistry (IHC), Flow Cytometry (FACS), Immunocytochemistry (ICC)

Product Details

Immunogen:	Purified recombinant fragment of human GSTP1 (AA: 2-210) expressed in E. coli.
Clone:	1A7B5
Isotype:	IgG1
Purification:	purified

Target Details

Target:	GSTP1
Alternative Name:	GSTP1 (GSTP1 Products)
Background:	Description: Glutathione S-transferases (GSTs) are a family of enzymes that play an important

Target Details

role in detoxification by catalyzing the conjugation of many hydrophobic and electrophilic compounds with reduced glutathione. Based on their biochemical, immunologic, and structural properties, the soluble GSTs are categorized into 4 main classes: alpha, mu, pi, and theta. This GST family member is a polymorphic gene encoding active, functionally different GSTP1 variant proteins that are thought to function in xenobiotic metabolism and play a role in susceptibility to cancer, and other diseases.

Aliases: PI, DFN7, GST3, GSTP, FAEES3, HEL-S-22

Molecular Weight: 23 kDa

Gene ID: 2950

Pathways: [Cellular Response to Molecule of Bacterial Origin](#)

Application Details

Application Notes: WB:1:500 - 1:2000, IHC:1:200 - 1:1000, ICC:1:200 - 1:1000, FCM:1:200 - 1:400, ELISA:1:10000,

Restrictions: For Research Use only

Handling

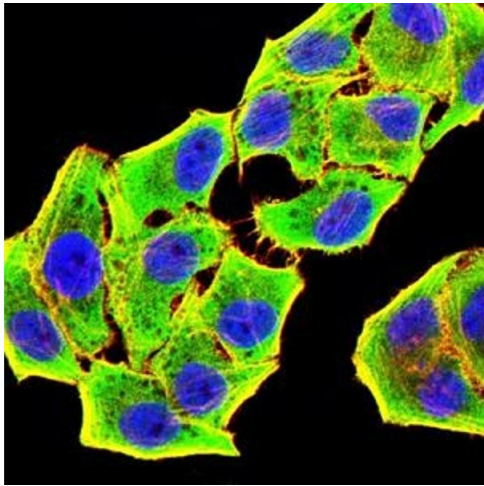
Buffer: Purified antibody in PBS with 0.05 % sodium azide

Preservative: Sodium azide

Precaution of Use: This product contains Sodium azide: a POISONOUS AND HAZARDOUS SUBSTANCE which should be handled by trained staff only.

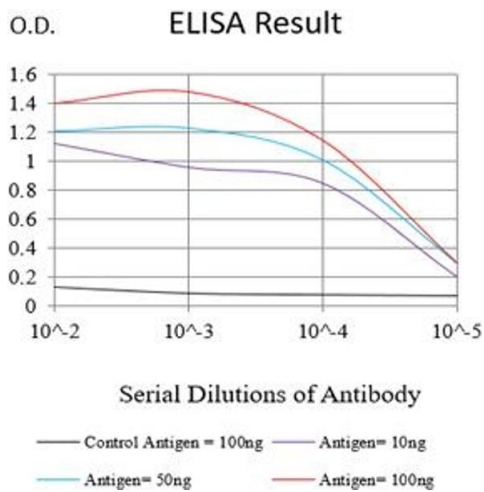
Storage: 4 °C/-20 °C

Storage Comment: 4°C, -20°C for long term storage



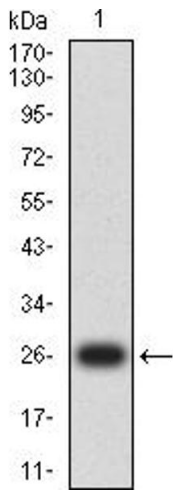
Immunofluorescence

Image 1. Immunofluorescence analysis of HeLa cells using GSTP1 mouse mAb (green). Blue: DRAQ5 fluorescent DNA dye. Red: Actin filaments have been labeled with Alexa Fluor- 555 phalloidin. Secondary antibody from Fisher (Cat#: 35503)



ELISA

Image 2. Black line: Control Antigen (100 ng),Purple line: Antigen (10 ng), Blue line: Antigen (50 ng), Red line:Antigen (100 ng)



Western Blotting

Image 3. Western blot analysis using GSTP1 mAb against human GSTP1 (AA: 2-210) recombinant protein. (Expected MW is 26 kDa)

Please check the [product details page](#) for more images. Overall 8 images are available for ABIN7193605.