

Datasheet for ABIN7193608
anti-FGL1 antibody (AA 23-312)

6 Images

[Go to Product page](#)

Overview

Quantity:	0.1 mg
Target:	FGL1
Binding Specificity:	AA 23-312
Reactivity:	Human
Host:	Mouse
Clonality:	Monoclonal
Conjugate:	This FGL1 antibody is un-conjugated
Application:	Western Blotting (WB), Immunohistochemistry (IHC), ELISA, Immunocytochemistry (ICC), Flow Cytometry (FACS)

Product Details

Immunogen:	Purified recombinant fragment of human FGL1 (AA: 23-312) expressed in E. coli.
Clone:	4F9C11
Isotype:	IgG2a
Purification:	purified

Target Details

Target:	FGL1
Alternative Name:	FGL1 (FGL1 Products)
Background:	Description: Fibrinogen-like 1 is a member of the fibrinogen family. This protein is homologous

Target Details

to the carboxy terminus of the fibrinogen beta- and gamma- subunits which contains the four conserved cysteines of fibrinogens and fibrinogen related proteins. However, this protein lacks the platelet-binding site, cross-linking region and a thrombin-sensitive site which are necessary for fibrin clot formation. This protein may play a role in the development of hepatocellular carcinomas. Four alternatively spliced transcript variants encoding the same protein exist for this gene. [provided by RefSeq, Jul 2008]

Aliases: HPS, HFREP1, HP-041, LFIRE1, LFIRE-1

Molecular Weight: 36.4 kDa

Gene ID: 2267

Application Details

Application Notes: WB:1:500 - 1:2000, IHC:1:200 - 1:1000, ICC:1:200 - 1:1000, FCM:1:200 - 1:400, ELISA:1:10000,

Restrictions: For Research Use only

Handling

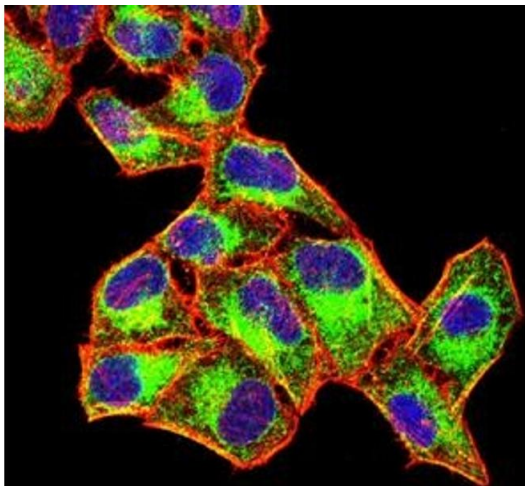
Buffer: Purified antibody in PBS with 0.05 % sodium azide

Preservative: Sodium azide

Precaution of Use: This product contains Sodium azide: a POISONOUS AND HAZARDOUS SUBSTANCE which should be handled by trained staff only.

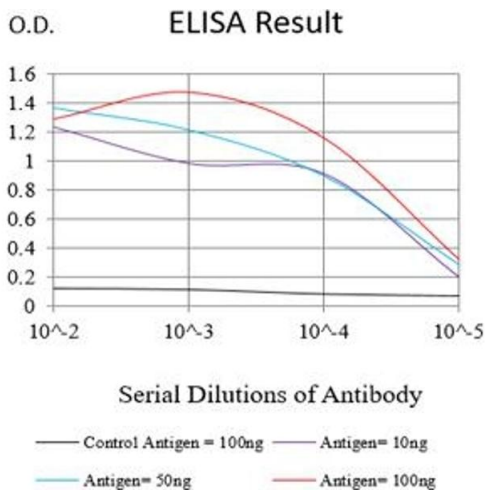
Storage: 4 °C/-20 °C

Storage Comment: 4°C, -20°C for long term storage



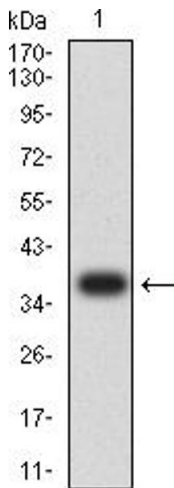
Immunofluorescence

Image 1. Immunofluorescence analysis of HeLa cells using FGL1 mouse mAb (green). Blue: DRAQ5 fluorescent DNA dye. Red: Actin filaments have been labeled with Alexa Fluor- 555 phalloidin. Secondary antibody from Fisher (Cat#: 35503)



ELISA

Image 2. Black line: Control Antigen (100 ng),Purple line: Antigen (10 ng), Blue line: Antigen (50 ng), Red line:Antigen (100 ng)



Western Blotting

Image 3. Western blot analysis using FGL1 mAb against human FGL1 (AA: 23-312) recombinant protein. (Expected MW is 36.9 kDa)

Please check the [product details page](#) for more images. Overall 6 images are available for ABIN7193608.