

Datasheet for ABIN7193614  
**anti-WT1 antibody (AA 1-181)**

## 8 Images

[Go to Product page](#)

## Overview

Quantity:	0.1 mg
Target:	WT1
Binding Specificity:	AA 1-181
Reactivity:	Human, Monkey
Host:	Mouse
Clonality:	Monoclonal
Conjugate:	This WT1 antibody is un-conjugated
Application:	Flow Cytometry (FACS), Immunohistochemistry (IHC), Western Blotting (WB), ELISA, Immunocytochemistry (ICC)

## Product Details

Immunogen:	Purified recombinant fragment of human WT1 (AA: 1-181) expressed in E. coli.
Clone:	7F9E8
Isotype:	IgG1
Purification:	purified

## Target Details

Target:	WT1
Alternative Name:	WT1 ( <a href="#">WT1 Products</a> )
Background:	Description: This gene encodes a transcription factor that contains four zinc-finger motifs at

## Target Details

the C-terminus and a proline/glutamine-rich DNA-binding domain at the N-terminus. It has an essential role in the normal development of the urogenital system, and it is mutated in a small subset of patients with Wilms tumor. This gene exhibits complex tissue-specific and polymorphic imprinting pattern, with biallelic, and monoallelic expression from the maternal and paternal alleles in different tissues. Multiple transcript variants have been described. In several variants, there is evidence for the use of a non-AUG (CUG) translation initiation codon upstream of, and in-frame with the first AUG. Authors of PMID:7926762 also provide evidence that WT1 mRNA undergoes RNA editing in human and rat, and that this process is tissue-restricted and developmentally regulated.

Aliases: GUD, AWT1, WAGR, WT33, NPHS4, WIT-2

Molecular Weight: 49.2 kDa

Gene ID: 7490

Pathways: [Tube Formation](#)

## Application Details

Application Notes: WB:1:500 - 1:2000, IHC:1:200 - 1:1000, ICC:1:200 - 1:1000, FCM:1:200 - 1:400, ELISA:1:10000,

Restrictions: For Research Use only

## Handling

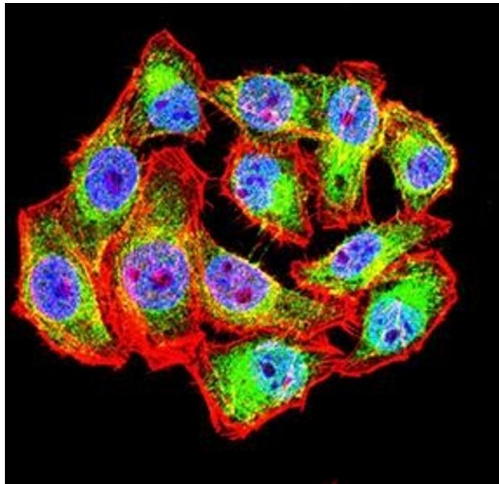
Buffer: Purified antibody in PBS with 0.05 % sodium azide

Preservative: Sodium azide

Precaution of Use: This product contains Sodium azide: a POISONOUS AND HAZARDOUS SUBSTANCE which should be handled by trained staff only.

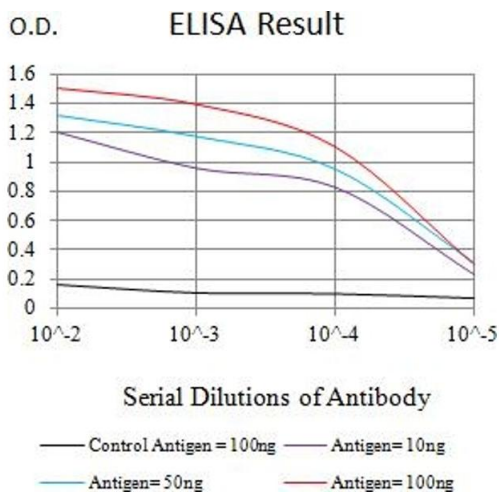
Storage: 4 °C/-20 °C

Storage Comment: 4°C, -20°C for long term storage



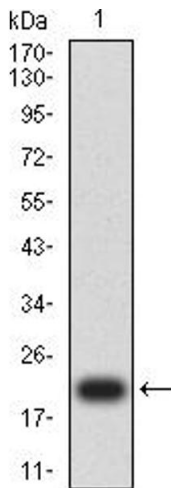
Immunofluorescence

**Image 1.** Immunofluorescence analysis of HeLa cells using WT1 mouse mAb (green). Blue: DRAQ5 fluorescent DNA dye. Red: Actin filaments have been labeled with Alexa Fluor- 555 phalloidin. Secondary antibody from Fisher (Cat#: 35503)



ELISA

**Image 2.** Black line: Control Antigen (100 ng),Purple line: Antigen (10 ng), Blue line: Antigen (50 ng), Red line:Antigen (100 ng)



Western Blotting

**Image 3.** Western blot analysis using WT1 mAb against human WT1 (AA: 1-181) recombinant protein. (Expected MW is 21.2 kDa)

Please check the [product details page](#) for more images. Overall 8 images are available for ABIN7193614.