



[Go to Product page](#)

Datasheet for ABIN7193615
anti-MUC16 antibody (AA 1-200)

6 Images

Overview

Quantity:	0.1 mg
Target:	MUC16 (CA125)
Binding Specificity:	AA 1-200
Reactivity:	Human
Host:	Mouse
Clonality:	Monoclonal
Conjugate:	This MUC16 antibody is un-conjugated
Application:	ELISA, Western Blotting (WB), Immunohistochemistry (IHC), Flow Cytometry (FACS)

Product Details

Immunogen:	Purified recombinant fragment of human MUC16 (AA: extra 1-200) expressed in E. coli.
Clone:	4C8C8
Isotype:	IgG1
Purification:	purified

Target Details

Target:	MUC16 (CA125)
Alternative Name:	MUC16 (CA125 Products)
Background:	Description: This gene encodes a protein that is a member of the mucin family. Mucins are high molecular weight, O-glycosylated proteins that play an important role in forming a protective

Target Details

mucous barrier, and are found on the apical surfaces of the epithelia. The encoded protein is a membrane-tethered mucin that contains an extracellular domain at its amino terminus, a large tandem repeat domain, and a transmembrane domain with a short cytoplasmic domain. The amino terminus is highly glycosylated, while the repeat region contains 156 amino acid repeats unit that are rich in serines, threonines, and prolines. Interspersed within the repeats are Sea urchin sperm protein Enterokinase and Agrin (SEA) modules, leucine-rich repeats and ankyrin (ANK) repeats. These regions together form the ectodomain, and there is a potential cleavage site found near an SEA module close to the transmembrane domain. This protein is thought to play a role in forming a barrier, protecting epithelial cells from pathogens. Products of this gene have been used as a marker for different cancers, with higher expression levels associated with poorer outcomes.

Aliases: CA125

Molecular Weight: 1519 kDa

Gene ID: 94025

Application Details

Application Notes: WB:1:500 - 1:2000, IHC:1:200 - 1:1000, FCM:1:200 - 1:400, ELISA:1:10000,

Restrictions: For Research Use only

Handling

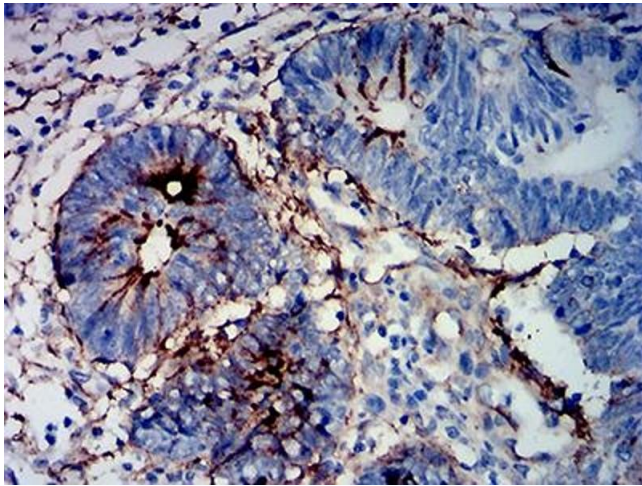
Buffer: Purified antibody in PBS with 0.05 % sodium azide

Preservative: Sodium azide

Precaution of Use: This product contains Sodium azide: a POISONOUS AND HAZARDOUS SUBSTANCE which should be handled by trained staff only.

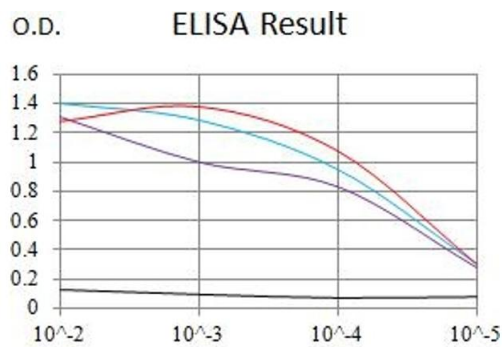
Storage: 4 °C/-20 °C

Storage Comment: 4°C, -20°C for long term storage



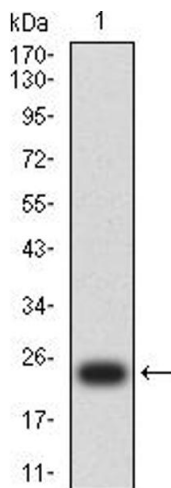
Immunohistochemistry

Image 1. Immunohistochemical analysis of paraffin-embedded rectum cancer tissues using MUC16 mouse mAb with DAB staining.



Serial Dilutions of Antibody

— Control Antigen = 100ng — Antigen = 10ng
 — Antigen = 50ng — Antigen = 100ng



ELISA

Image 2. Black line: Control Antigen (100 ng), Purple line: Antigen (10 ng), Blue line: Antigen (50 ng), Red line: Antigen (100 ng)

Western Blotting

Image 3. Western blot analysis using MUC16 mAb against human MUC16 (AA: 1-200) recombinant protein. (Expected MW is 23.8 kDa)

Please check the [product details page](#) for more images. Overall 6 images are available for ABIN7193615.