

Datasheet for ABIN7193622
anti-CD137 antibody (AA 214-255)

5 Images

[Go to Product page](#)

Overview

Quantity:	0.1 mg
Target:	CD137 (TNFRSF9)
Binding Specificity:	AA 214-255
Reactivity:	Human
Host:	Mouse
Clonality:	Monoclonal
Conjugate:	This CD137 antibody is un-conjugated
Application:	ELISA, Flow Cytometry (FACS), Western Blotting (WB)

Product Details

Immunogen:	Purified recombinant fragment of human CD137 (AA: 214-255) expressed in E. coli.
Clone:	2A12C2
Isotype:	IgG1
Purification:	purified

Target Details

Target:	CD137 (TNFRSF9)
Alternative Name:	CD137 (TNFRSF9 Products)
Background:	Description: The protein encoded by this gene is a member of the TNF-receptor superfamily. This receptor contributes to the clonal expansion, survival, and development of T cells. It can

Target Details

also induce proliferation in peripheral monocytes, enhance T cell apoptosis induced by TCR/CD3 triggered activation, and regulate CD28 co-stimulation to promote Th1 cell responses. The expression of this receptor is induced by lymphocyte activation. TRAF adaptor proteins have been shown to bind to this receptor and transduce the signals leading to activation of NF-kappaB.

Aliases: TNFRSF9, ILA, 4-1BB, CDw137

Molecular Weight:	27.9 kDa
-------------------	----------

Gene ID:	3604
----------	------

Pathways:	Cancer Immune Checkpoints
-----------	---

Application Details

Application Notes:	WB:1:500 - 1:2000, FCM:1:200 - 1:400, ELISA:1:10000,
--------------------	--

Restrictions:	For Research Use only
---------------	-----------------------

Handling

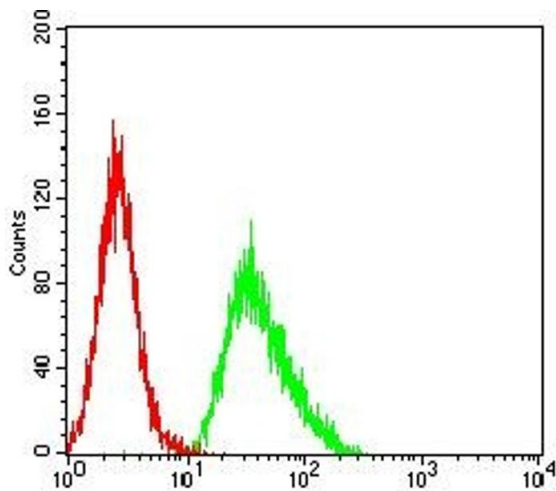
Buffer:	Purified antibody in PBS with 0.05 % sodium azide
---------	---

Preservative:	Sodium azide
---------------	--------------

Precaution of Use:	This product contains Sodium azide: a POISONOUS AND HAZARDOUS SUBSTANCE which should be handled by trained staff only.
--------------------	--

Storage:	4 °C/-20 °C
----------	-------------

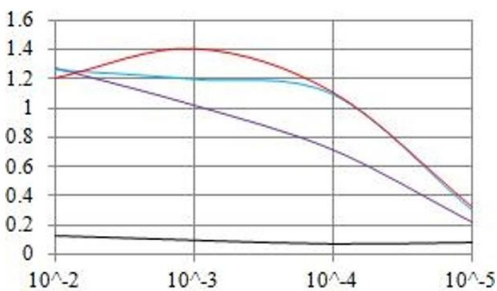
Storage Comment:	4°C, -20°C for long term storage
------------------	----------------------------------



Flow Cytometry

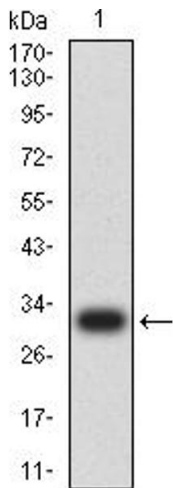
Image 1. Flow cytometric analysis of HL-60 cells using CD137 mouse mAb (green) and negative control (red).

O.D. ELISA Result



Serial Dilutions of Antibody

— Control Antigen = 100ng — Antigen = 10ng
— Antigen = 50ng — Antigen = 100ng



ELISA

Image 2. Black line: Control Antigen (100 ng), Purple line: Antigen (10 ng), Blue line: Antigen (50 ng), Red line: Antigen (100 ng)

Western Blotting

Image 3. Western blot analysis using CD137 mAb against human CD137 (AA: 214-255) recombinant protein. (Expected MW is 30.9 kDa)

Please check the [product details page](#) for more images. Overall 5 images are available for ABIN7193622.