

Datasheet for ABIN7193624

anti-TET2 antibody

7 Images

[Go to Product page](#)

Overview

Quantity:	0.1 mg
Target:	TET2
Reactivity:	Human
Host:	Mouse
Clonality:	Monoclonal
Conjugate:	This TET2 antibody is un-conjugated
Application:	Western Blotting (WB), ELISA, Immunohistochemistry (IHC), Immunocytochemistry (ICC), Flow Cytometry (FACS)

Product Details

Immunogen:	Purified recombinant fragment of human TET2 expressed in E. coli.
Clone:	5H8C7
Isotype:	IgG1
Purification:	purified

Target Details

Target:	TET2
Alternative Name:	TET2 (TET2 Products)
Background:	Description: The protein encoded by this gene is a methylcytosine dioxygenase that catalyzes the conversion of methylcytosine to 5-hydroxymethylcytosine. The encoded protein is involved in myelopoiesis, and defects in this gene have been associated with several myeloproliferative

Target Details

disorders. Two variants encoding different isoforms have been found for this gene.

Aliases: MDS, KIAA1546

Molecular Weight: 223.8 kDa

Gene ID: 54790

Pathways: [Warburg Effect](#)

Application Details

Application Notes: WB:1:500 - 1:2000, IHC:1:200 - 1:1000, ICC:1:200 - 1:1000, FCM:1:200 - 1:400, ELISA:1:10000,

Restrictions: For Research Use only

Handling

Buffer: Purified antibody in PBS with 0.05 % sodium azide

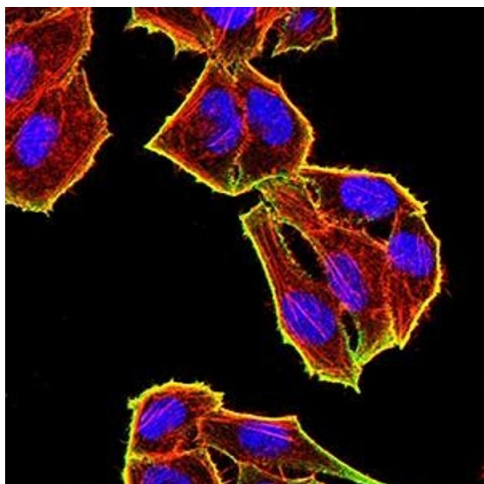
Preservative: Sodium azide

Precaution of Use: This product contains Sodium azide: a POISONOUS AND HAZARDOUS SUBSTANCE which should be handled by trained staff only.

Storage: 4 °C/-20 °C

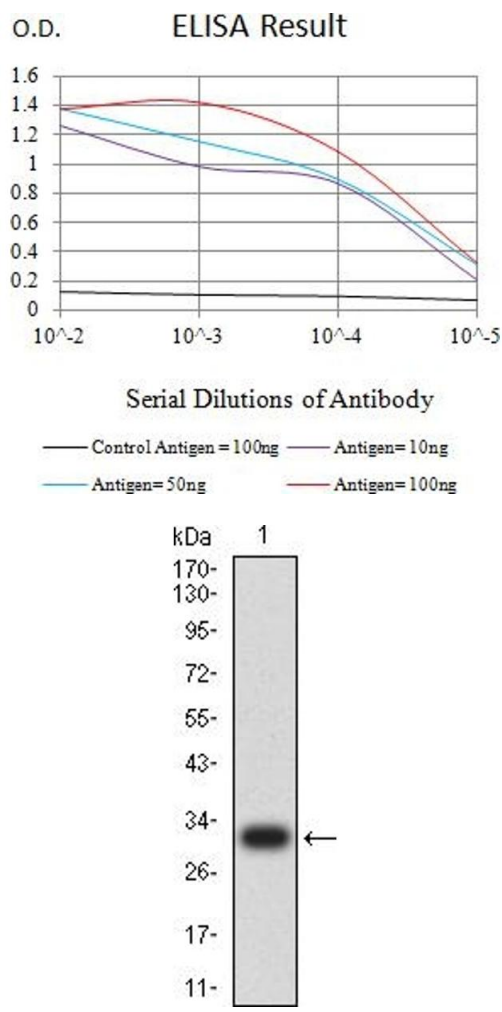
Storage Comment: 4°C, -20°C for long term storage

Images



Immunofluorescence

Image 1. Immunofluorescence analysis of HeLa cells using TET2 mouse mAb (green). Blue: DRAQ5 fluorescent DNA dye. Red: Actin filaments have been labeled with Alexa Fluor- 555 phalloidin. Secondary antibody from Fisher (Cat#: 35503)



ELISA

Image 2. Black line: Control Antigen (100 ng),Purple line: Antigen (10 ng), Blue line: Antigen (50 ng), Red line:Antigen (100 ng)

Western Blotting

Image 3. Western blot analysis using TET2 mAb against human TET2 recombinant protein. (Expected MW is 31 kDa)

Please check the [product details page](#) for more images. Overall 7 images are available for ABIN7193624.