

Datasheet for ABIN7193626

**anti-CDKN1C antibody**

8 Images

[Go to Product page](#)

## Overview

Quantity:	0.1 mg
Target:	CDKN1C
Reactivity:	Human
Host:	Mouse
Clonality:	Monoclonal
Conjugate:	This CDKN1C antibody is un-conjugated
Application:	Western Blotting (WB), Flow Cytometry (FACS), ELISA, Immunohistochemistry (IHC), Immunocytochemistry (ICC)

## Product Details

Immunogen:	Purified recombinant fragment of human CDKN1C expressed in E. coli.
Clone:	1F4A9
Isotype:	IgG1
Purification:	purified

## Target Details

Target:	CDKN1C
Alternative Name:	CDKN1C ( <a href="#">CDKN1C Products</a> )
Background:	Description: This gene is imprinted, with preferential expression of the maternal allele. The encoded protein is a tight-binding, strong inhibitor of several G1 cyclin/Cdk complexes and a negative regulator of cell proliferation. Mutations in this gene are implicated in sporadic cancers

## Target Details

and Beckwith-Wiedemann syndrome, suggesting that this gene is a tumor suppressor candidate. Three transcript variants encoding two different isoforms have been found for this gene.

Aliases: BWS, WBS, p57, BWCR, KIP2, p57Kip2

Molecular Weight: 32.2 kDa

Gene ID: 1028

Pathways: [Cell Division Cycle](#), [Dopaminergic Neurogenesis](#)

## Application Details

Application Notes: WB:1:500 - 1:2000, IHC:1:200 - 1:1000, ICC:1:200 - 1:1000, FCM:1:200 - 1:400, ELISA:1:10000,

Restrictions: For Research Use only

## Handling

Buffer: Purified antibody in PBS with 0.05 % sodium azide

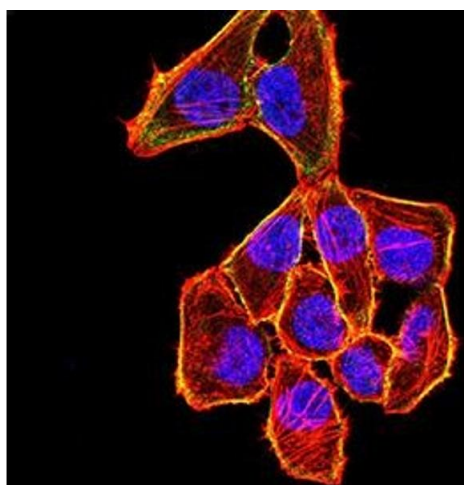
Preservative: Sodium azide

Precaution of Use: This product contains Sodium azide: a POISONOUS AND HAZARDOUS SUBSTANCE which should be handled by trained staff only.

Storage: 4 °C/-20 °C

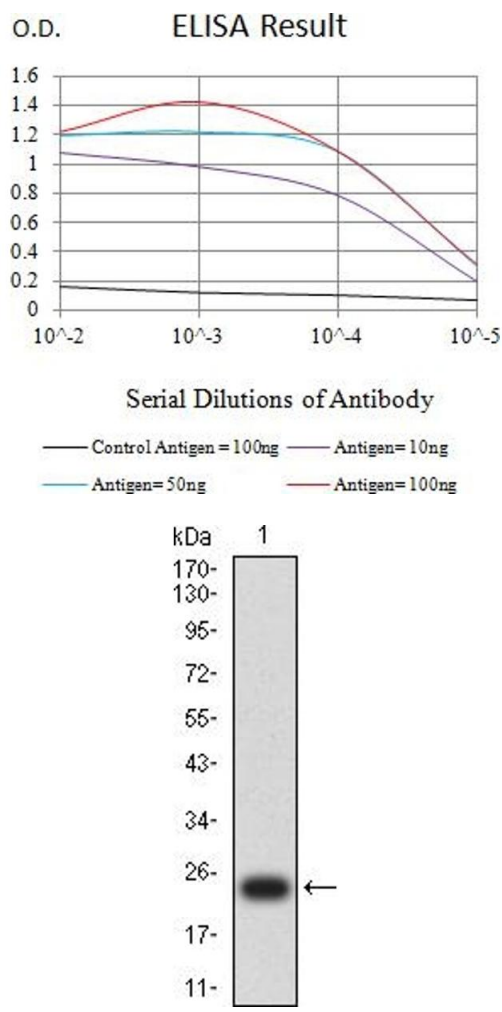
Storage Comment: 4°C, -20°C for long term storage

## Images



### Immunofluorescence

**Image 1.** Immunofluorescence analysis of HeLa cells using CDKN1C mouse mAb (green). Blue: DAPI fluorescent DNA dye. Red: Actin filaments have been labeled with Alexa Fluor- 555 phalloidin. Secondary antibody from Fisher (Cat#: 35503)



### ELISA

**Image 2.** Black line: Control Antigen (100 ng),Purple line: Antigen (10 ng), Blue line: Antigen (50 ng), Red line:Antigen (100 ng)

### Western Blotting

**Image 3.** Western blot analysis using CDKN1C mAb against human CDKN1C recombinant protein. (Expected MW is 23.3 kDa)

Please check the [product details page](#) for more images. Overall 8 images are available for ABIN7193626.