

Datasheet for ABIN7193631
anti-CD207 antibody (AA 65-328)

7 Images

[Go to Product page](#)

Overview

Quantity:	0.1 mg
Target:	CD207
Binding Specificity:	AA 65-328
Reactivity:	Human
Host:	Mouse
Clonality:	Monoclonal
Conjugate:	This CD207 antibody is un-conjugated
Application:	Western Blotting (WB), ELISA, Immunohistochemistry (IHC), Flow Cytometry (FACS), Immunocytochemistry (ICC)

Product Details

Immunogen:	Purified recombinant fragment of human CD207 (AA: 65-328) expressed in E. coli.
Clone:	2E1B2
Isotype:	IgG1
Purification:	purified

Target Details

Target:	CD207
Alternative Name:	CD207 (CD207 Products)
Background:	Description: The protein encoded by this gene is expressed only in Langerhans cells which are

Target Details

immature dendritic cells of the epidermis and mucosa. It is localized in the Birbeck granules, organelles present in the cytoplasm of Langerhans cells and consisting of superimposed and zippered membranes. It is a C-type lectin with mannose binding specificity, and it has been proposed that mannose binding by this protein leads to internalization of antigen into Birbeck granules and providing access to a nonclassical antigen-processing pathway. Mutations in this gene result in Birbeck granules deficiency or loss of sugar binding activity. [provided by RefSeq, Aug 2010]

Aliases: CLEC4K

Molecular Weight:	36.7 kDa
-------------------	----------

Gene ID:	50489
----------	-------

Application Details

Application Notes:	WB:1:500 - 1:2000, IHC:1:200 - 1:1000, ICC:1:200 - 1:1000, FCM:1:200 - 1:400, ELISA:1:10000,
--------------------	----------------------------------------------------------------------------------------------

Restrictions:	For Research Use only
---------------	-----------------------

Handling

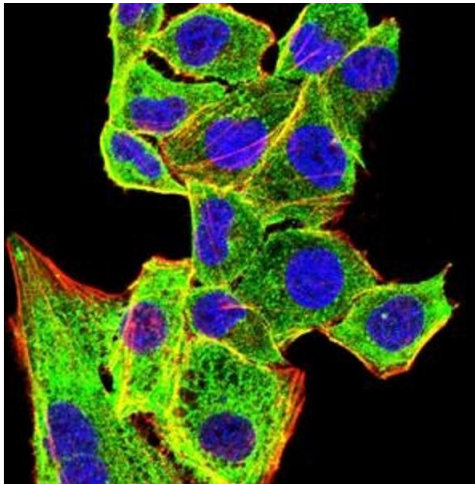
Buffer:	Purified antibody in PBS with 0.05 % sodium azide
---------	---------------------------------------------------

Preservative:	Sodium azide
---------------	--------------

Precaution of Use:	This product contains Sodium azide: a POISONOUS AND HAZARDOUS SUBSTANCE which should be handled by trained staff only.
--------------------	------------------------------------------------------------------------------------------------------------------------

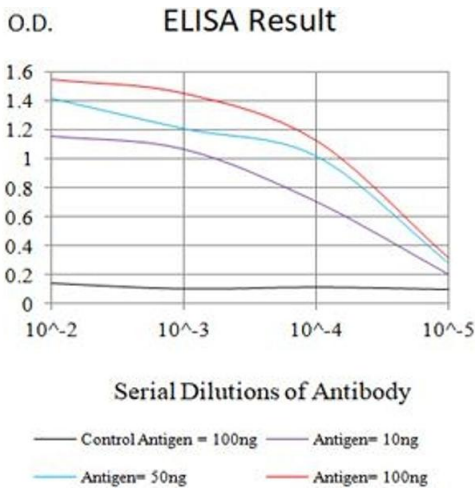
Storage:	4 °C/-20 °C
----------	-------------

Storage Comment:	4°C, -20°C for long term storage
------------------	----------------------------------



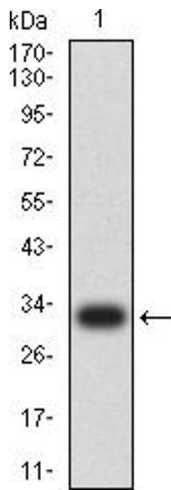
Immunofluorescence

Image 1. Immunofluorescence analysis of HeLa cells using CD207 mouse mAb (green). Blue: DRAQ5 fluorescent DNA dye. Red: Actin filaments have been labeled with Alexa Fluor- 555 phalloidin. Secondary antibody from Fisher (Cat#: 35503)



ELISA

Image 2. Black line: Control Antigen (100 ng),Purple line: Antigen (10 ng), Blue line: Antigen (50 ng), Red line:Antigen (100 ng)



Western Blotting

Image 3. Western blot analysis using CD207 mAb against human CD207 (AA: 65-328) recombinant protein. (Expected MW is 32.7 kDa)

Please check the [product details page](#) for more images. Overall 7 images are available for ABIN7193631.