



[Go to Product page](#)

Datasheet for ABIN7193633

anti-Albumin antibody (AA 410-609)

6 Images

Overview

Quantity:	0.1 mg
Target:	Albumin (ALB)
Binding Specificity:	AA 410-609
Reactivity:	Human
Host:	Mouse
Clonality:	Monoclonal
Conjugate:	This Albumin antibody is un-conjugated
Application:	ELISA, Western Blotting (WB), Immunohistochemistry (IHC), Flow Cytometry (FACS)

Product Details

Immunogen:	Purified recombinant fragment of human ALB (AA: 410-609) expressed in E. coli.
Clone:	3F6E5
Isotype:	IgG1
Purification:	purified

Target Details

Target:	Albumin (ALB)
Alternative Name:	ALB (ALB Products)
Background:	Description: This gene encodes the most abundant protein in human blood. This protein functions in the regulation of blood plasma colloid osmotic pressure and acts as a carrier

Target Details

protein for a wide range of endogenous molecules including hormones, fatty acids, and metabolites, as well as exogenous drugs. Additionally, this protein exhibits an esterase-like activity with broad substrate specificity. The encoded preproprotein is proteolytically processed to generate the mature protein. A peptide derived from this protein, EPI-X4, is an endogenous inhibitor of the CXCR4 chemokine receptor. [provided by RefSeq, Jul 2016]

Aliases: HSA, PRO0883, PRO0903, PRO1341

Molecular Weight: 69.4 kDa

Gene ID: 213

Pathways: [Lipid Metabolism](#)

Application Details

Application Notes: WB:1:500 - 1:2000, IHC:1:200 - 1:1000, FCM:1:200 - 1:400, ELISA:1:10000,

Restrictions: For Research Use only

Handling

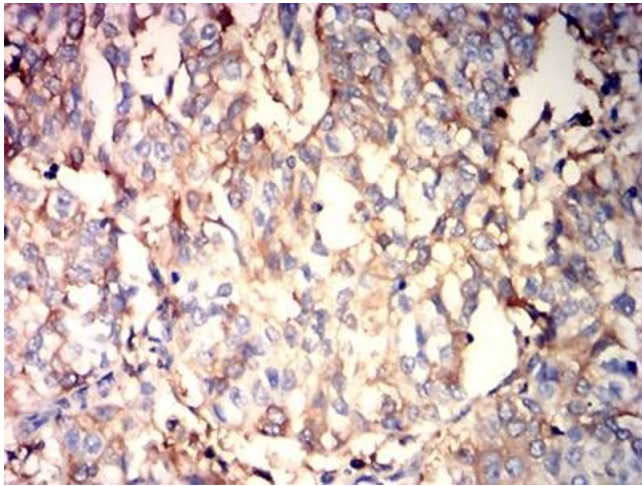
Buffer: Purified antibody in PBS with 0.05 % sodium azide

Preservative: Sodium azide

Precaution of Use: This product contains Sodium azide: a POISONOUS AND HAZARDOUS SUBSTANCE which should be handled by trained staff only.

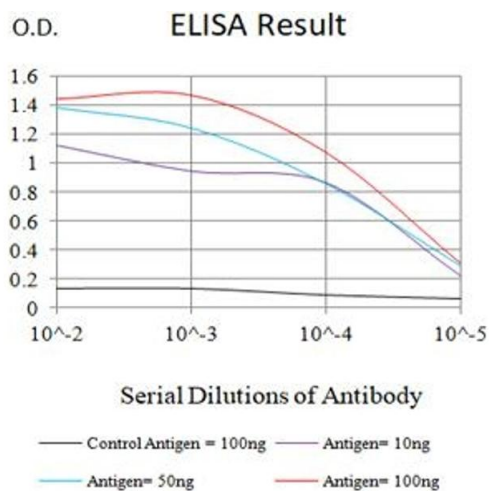
Storage: 4 °C/-20 °C

Storage Comment: 4°C, -20°C for long term storage



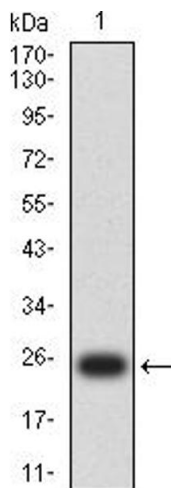
Immunohistochemistry

Image 1. Immunohistochemical analysis of paraffin-embedded bladder cancer tissues using ALB mouse mAb with DAB staining.



ELISA

Image 2. Black line: Control Antigen (100 ng), Purple line: Antigen (10 ng), Blue line: Antigen (50 ng), Red line: Antigen (100 ng)



Western Blotting

Image 3. Western blot analysis using ALB mAb against human ALB (AA: 410-609) recombinant protein. (Expected MW is 25.4 kDa kDa)

Please check the [product details page](#) for more images. Overall 6 images are available for ABIN7193633.