

Datasheet for ABIN7193645

anti-ACTH antibody

6 Images

[Go to Product page](#)

Overview

Quantity:	0.1 mg
Target:	ACTH
Reactivity:	Human
Host:	Mouse
Clonality:	Monoclonal
Conjugate:	This ACTH antibody is un-conjugated
Application:	Flow Cytometry (FACS), ELISA, Western Blotting (WB), Immunocytochemistry (ICC)

Product Details

Immunogen:	Purified recombinant fragment of human ACTH expressed in E. coli.
Clone:	3A4H4
Isotype:	IgG1
Purification:	purified

Target Details

Target:	ACTH
Alternative Name:	ACTH (ACTH Products)
Background:	Description: This gene encodes a preproprotein that undergoes extensive, tissue-specific, post-translational processing via cleavage by subtilisin-like enzymes known as prohormone convertases. There are eight potential cleavage sites within the preproprotein and, depending on tissue type and the available convertases, processing may yield as many as ten biologically

Target Details

active peptides involved in diverse cellular functions. The encoded protein is synthesized mainly in corticotroph cells of the anterior pituitary where four cleavage sites are used, adrenocorticotrophin, essential for normal steroidogenesis and the maintenance of normal adrenal weight, and lipotropin beta are the major end products. In other tissues, including the hypothalamus, placenta, and epithelium, all cleavage sites may be used, giving rise to peptides with roles in pain and energy homeostasis, melanocyte stimulation, and immune modulation. These include several distinct melanotropins, lipotropins, and endorphins that are contained within the adrenocorticotrophin and beta-lipotropin peptides. The antimicrobial melanotropin alpha peptide exhibits antibacterial and antifungal activity. Mutations in this gene have been associated with early onset obesity, adrenal insufficiency, and red hair pigmentation. Alternatively spliced transcript variants encoding the same protein have been described.

Aliases: POMC, LPH, MSH, NPP, POC, CLIP

Molecular Weight:	29.4 kDa
-------------------	----------

Gene ID:	5443
----------	------

Pathways:	Metabolism of Steroid Hormones and Vitamin D , Peptide Hormone Metabolism , Hormone Activity
-----------	--

Application Details

Application Notes:	WB:1:500 - 1:2000, ICC:1:200 - 1:1000, FCM:1:200 - 1:400, ELISA:1:10000,
--------------------	--

Restrictions:	For Research Use only
---------------	-----------------------

Handling

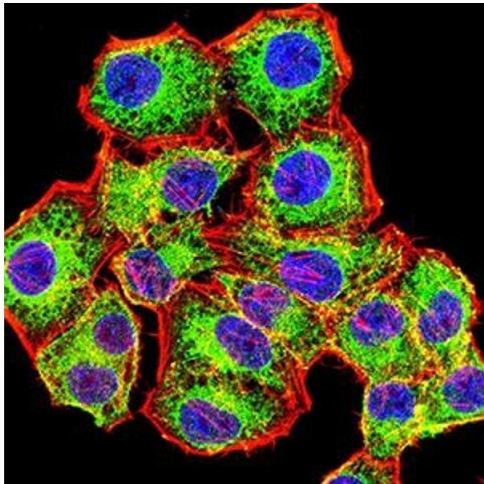
Buffer:	Purified antibody in PBS with 0.05 % sodium azide
---------	---

Preservative:	Sodium azide
---------------	--------------

Precaution of Use:	This product contains Sodium azide: a POISONOUS AND HAZARDOUS SUBSTANCE which should be handled by trained staff only.
--------------------	--

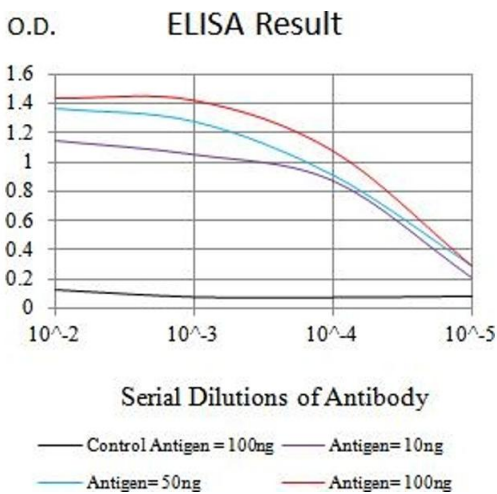
Storage:	4 °C/-20 °C
----------	-------------

Storage Comment:	4°C, -20°C for long term storage
------------------	----------------------------------



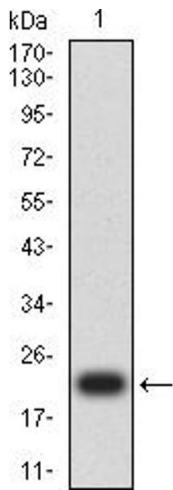
Immunofluorescence

Image 1. Immunofluorescence analysis of HeLa cells using ACTH mouse mAb (green). Blue: DRAQ5 fluorescent DNA dye. Red: Actin filaments have been labeled with Alexa Fluor- 555 phalloidin. Secondary antibody from Fisher (Cat#: 35503)



ELISA

Image 2. Black line: Control Antigen (100 ng),Purple line: Antigen (10 ng), Blue line: Antigen (50 ng), Red line:Antigen (100 ng)



Western Blotting

Image 3. Western blot analysis using ACTH mAb against human ACTH recombinant protein. (Expected MW is 21.9 kDa)

Please check the [product details page](#) for more images. Overall 6 images are available for ABIN7193645.