

Datasheet for ABIN7193662  
**anti-GLUL antibody (AA 2-121)**[Go to Product page](#)

## 7 Images

## Overview

Quantity:	0.1 mg
Target:	GLUL
Binding Specificity:	AA 2-121
Reactivity:	Human, Mouse
Host:	Mouse
Clonality:	Monoclonal
Conjugate:	This GLUL antibody is un-conjugated
Application:	Western Blotting (WB), ELISA, Immunohistochemistry (IHC), Immunocytochemistry (ICC), Flow Cytometry (FACS)

## Product Details

Immunogen:	Purified recombinant fragment of human GLUL (AA: 2-121) expressed in E. coli.
Clone:	2D11A2
Isotype:	IgG1
Purification:	purified

## Target Details

Target:	GLUL
Alternative Name:	GLUL ( <a href="#">GLUL Products</a> )
Background:	Description: The protein encoded by this gene belongs to the glutamine synthetase family. It

## Target Details

catalyzes the synthesis of glutamine from glutamate and ammonia in an ATP-dependent reaction. This protein plays a role in ammonia and glutamate detoxification, acid-base homeostasis, cell signaling, and cell proliferation. Glutamine is an abundant amino acid, and is important to the biosynthesis of several amino acids, pyrimidines, and purines. Mutations in this gene are associated with congenital glutamine deficiency, and overexpression of this gene was observed in some primary liver cancer samples. There are six pseudogenes of this gene found on chromosomes 2, 5, 9, 11, and 12. Alternative splicing results in multiple transcript variants.

Aliases: GS, GLNS, PIG43, PIG59

Molecular Weight:	42 kDa
-------------------	--------

Gene ID:	2752
----------	------

Pathways:	<a href="#">Positive Regulation of Peptide Hormone Secretion</a>
-----------	--

## Application Details

Application Notes:	WB:1:500 - 1:2000, IHC:1:200 - 1:1000, ICC:1:200 - 1:1000, FCM:1:200 - 1:400, ELISA:1:10000,
--------------------	--

Restrictions:	For Research Use only
---------------	-----------------------

## Handling

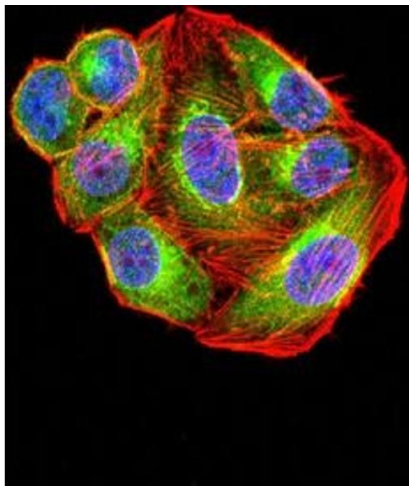
Buffer:	Purified antibody in PBS with 0.05 % sodium azide
---------	---

Preservative:	Sodium azide
---------------	--------------

Precaution of Use:	This product contains Sodium azide: a POISONOUS AND HAZARDOUS SUBSTANCE which should be handled by trained staff only.
--------------------	--

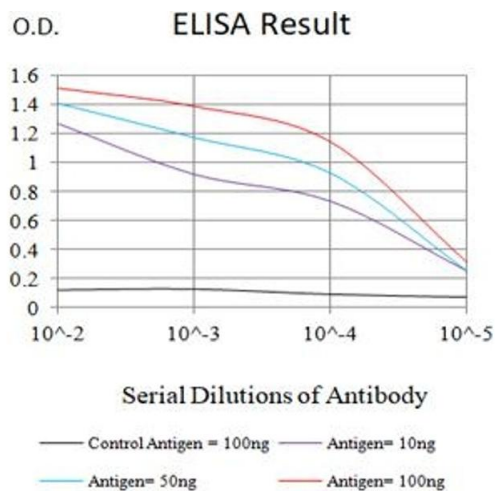
Storage:	4 °C/-20 °C
----------	-------------

Storage Comment:	4°C, -20°C for long term storage
------------------	----------------------------------



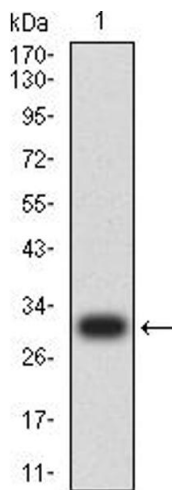
**Immunofluorescence**

**Image 1.** Immunofluorescence analysis of hela cells using GLUL mouse mAb (green). Blue: DRAQ5 fluorescent DNA dye. Red: Actin filaments have been labeled with Alexa Fluor- 555 phalloidin. Secondary antibody from Fisher (Cat#: 35503)



**ELISA**

**Image 2.** Black line: Control Antigen (100 ng),Purple line: Antigen (10 ng), Blue line: Antigen (50 ng), Red line:Antigen (100 ng)



**Western Blotting**

**Image 3.** Western blot analysis using GLUL mAb against human GLUL (AA: 2-121) recombinant protein. (Expected MW is 30.7 kDa)

Please check the [product details page](#) for more images. Overall 7 images are available for ABIN7193662.