

Datasheet for ABIN7193680  
**anti-GZMB antibody (AA 21-247)**[Go to Product page](#)

## 4 Images

## Overview

|                      |  |
|----------------------|--|
| Quantity:            | 0.1 mg   |
| Target:              | GZMB   |
| Binding Specificity: | AA 21-247  |
| Reactivity:          | Human  |
| Host:                | Mouse  |
| Clonality:           | Monoclonal   |
| Conjugate:           | This GZMB antibody is un-conjugated                      |
| Application:         | Western Blotting (WB), Immunohistochemistry (IHC), ELISA |

## Product Details

|               |  |
|---------------|--|
| Immunogen:    | Purified recombinant fragment of human GZMB (AA: 21-247) expressed in E. coli. |
| Clone:        | 2G12G7   |
| Isotype:      | IgG2a  |
| Purification: | purified   |

## Target Details

|                   |   |
|-------------------|---|
| Target:           | GZMB  |
| Alternative Name: | GZMB ( <a href="#">GZMB Products</a> )  |
| Background:       | Description: This gene encodes a member of the granzyme subfamily of proteins, part of the peptidase S1 family of serine proteases. The encoded preproprotein is secreted by natural killer |

## Target Details

(NK) cells and cytotoxic T lymphocytes (CTLs) and proteolytically processed to generate the active protease, which induces target cell apoptosis. This protein also processes cytokines and degrades extracellular matrix proteins, and these roles are implicated in chronic inflammation and wound healing. Expression of this gene may be elevated in human patients with cardiac fibrosis. [provided by RefSeq, Sep 2016]

Aliases: C11, HLP, CCPI, CGL1, CSPB, SECT, CGL-1, CSP-B, CTLA1, CTSG1

Molecular Weight: 28 kDa

Gene ID: 3002

Pathways: [Apoptosis](#), [Caspase Cascade in Apoptosis](#)

## Application Details

Application Notes: WB:1:500 - 1:2000, IHC:1:200 - 1:1000, ELISA:1:10000,

Restrictions: For Research Use only

## Handling

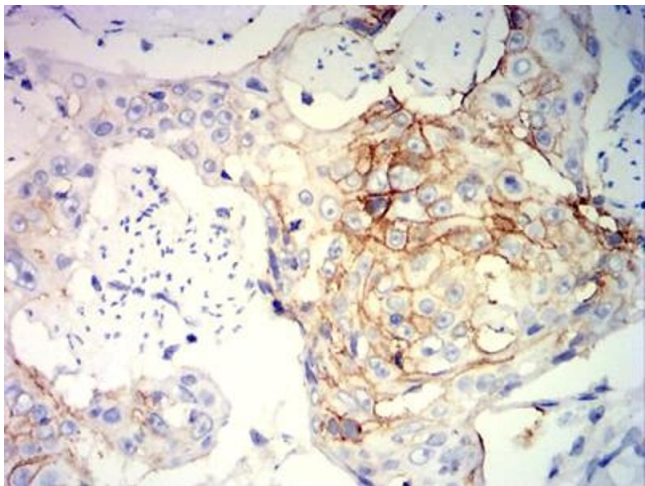
Buffer: Purified antibody in PBS with 0.05 % sodium azide

Preservative: Sodium azide

Precaution of Use: This product contains Sodium azide: a POISONOUS AND HAZARDOUS SUBSTANCE which should be handled by trained staff only.

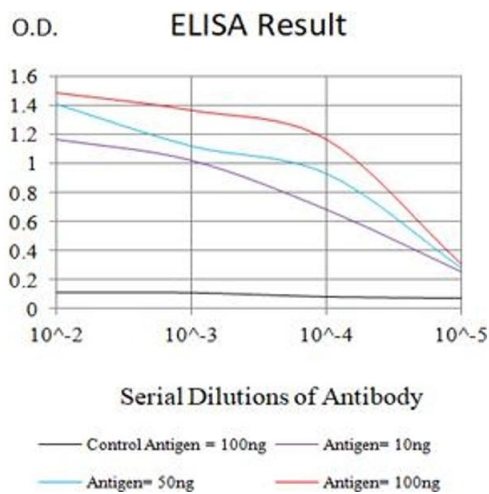
Storage: 4 °C/-20 °C

Storage Comment: 4°C, -20°C for long term storage



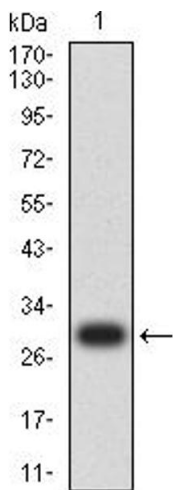
Immunohistochemistry

**Image 1.** Immunohistochemical analysis of paraffin-embedded brain tissues using GZMB mouse mAb with DAB staining.



ELISA

**Image 2.** Black line: Control Antigen (100 ng),Purple line: Antigen (10 ng), Blue line: Antigen (50 ng), Red line:Antigen (100 ng)



Western Blotting

**Image 3.** Western blot analysis using GZMB mAb against human GZMB (AA: 21-247) recombinant protein. (Expected MW is 28.4 kDa)

Please check the [product details page](#) for more images. Overall 4 images are available for ABIN7193680.