

Datasheet for ABIN7193684

**anti-Claudin 6 antibody**

## 4 Images

[Go to Product page](#)

## Overview

Quantity:	0.1 mg
Target:	Claudin 6 (CLDN6)
Reactivity:	Human
Host:	Mouse
Clonality:	Monoclonal
Conjugate:	This Claudin 6 antibody is un-conjugated
Application:	Western Blotting (WB), ELISA, Flow Cytometry (FACS)

## Product Details

Immunogen:	Purified recombinant fragment of human CLDN6 (AA: extra(29-81) and extra(138-160)) expressed in E. coli.
Clone:	8G5D2
Isotype:	IgG1
Purification:	purified

## Target Details

Target:	Claudin 6 (CLDN6)
Alternative Name:	CLDN6 ( <a href="#">CLDN6 Products</a> )
Background:	Description: Tight junctions represent one mode of cell-to-cell adhesion in epithelial or endothelial cell sheets, forming continuous seals around cells and serving as a physical barrier to prevent solutes and water from passing freely through the paracellular space. These

## Target Details

junctions are comprised of sets of continuous networking strands in the outwardly facing cytoplasmic leaflet, with complementary grooves in the inwardly facing extracytoplasmic leaflet. This gene encodes a component of tight junction strands, which is a member of the claudin family. The protein is an integral membrane protein and is one of the entry cofactors for hepatitis C virus. The gene methylation may be involved in esophageal tumorigenesis. This gene is adjacent to another family member CLDN9 on chromosome 16.[provided by RefSeq, Aug 2010]

Aliases: CLDN6

Molecular Weight:	23.3 kDa
-------------------	----------

Gene ID:	9074
----------	------

Pathways:	<a href="#">Hepatitis C</a>
-----------	-----------------------------

## Application Details

Application Notes:	WB:1:500 - 1:2000, FCM:1:200 - 1:400, ELISA:1:10000,
--------------------	--

Restrictions:	For Research Use only
---------------	-----------------------

## Handling

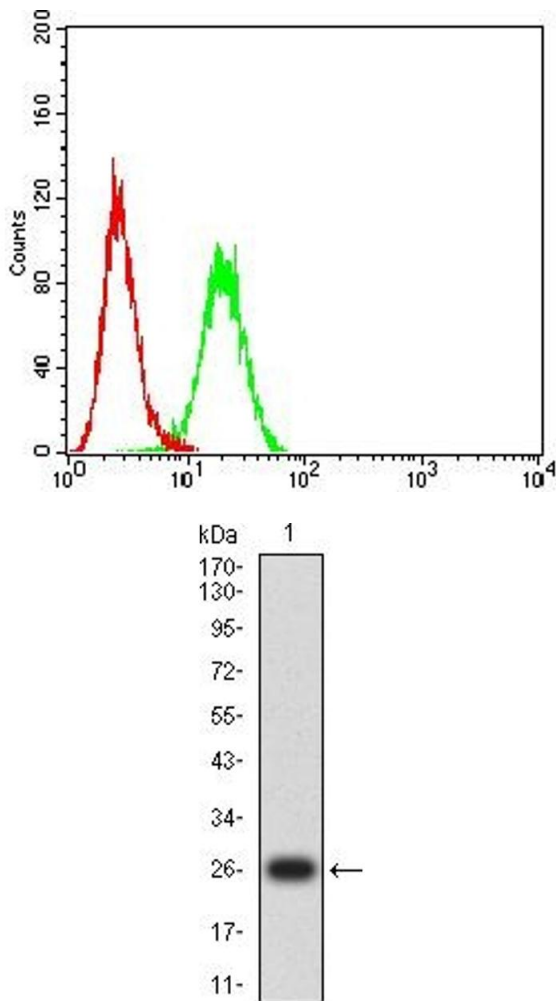
Buffer:	Purified antibody in PBS with 0.05 % sodium azide
---------	---

Preservative:	Sodium azide
---------------	--------------

Precaution of Use:	This product contains Sodium azide: a POISONOUS AND HAZARDOUS SUBSTANCE which should be handled by trained staff only.
--------------------	--

Storage:	4 °C/-20 °C
----------	-------------

Storage Comment:	4°C, -20°C for long term storage
------------------	----------------------------------

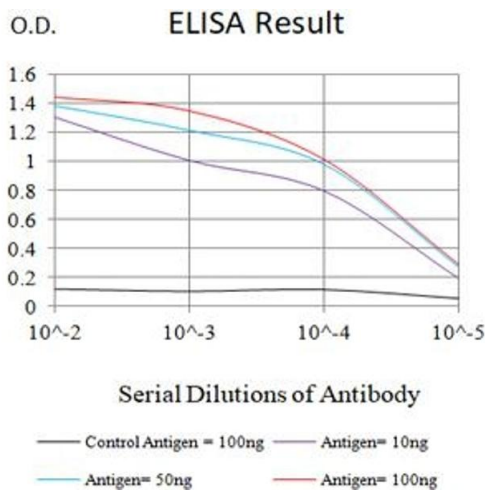


Flow Cytometry

**Image 1.** Flow cytometric analysis of Hepg2 cells using CLDN6 mouse mAb (green) and negative control (red).

Western Blotting

**Image 2.** Western blot analysis using CLDN6 mAb against human CLDN6 (AA: extra(29-81) and extra(138-160)) recombinant protein. (Expected MW is 26 kDa)



ELISA

**Image 3.** Black line: Control Antigen (100 ng),Purple line: Antigen (10 ng), Blue line: Antigen (50 ng), Red line:Antigen (100 ng)

Please check the [product details page](#) for more images. Overall 4 images are available for ABIN7193684.