

Datasheet for ABIN7193695
anti-Cyclin D1 antibody (AA 1-295)

7 Images

[Go to Product page](#)

Overview

Quantity:	0.1 mg
Target:	Cyclin D1 (CCND1)
Binding Specificity:	AA 1-295
Reactivity:	Human, Mouse
Host:	Mouse
Clonality:	Monoclonal
Conjugate:	This Cyclin D1 antibody is un-conjugated
Application:	Western Blotting (WB), ELISA, Immunohistochemistry (IHC), Flow Cytometry (FACS)

Product Details

Immunogen:	Purified recombinant fragment of human CCND1 (AA: 1-295) expressed in E. coli.
Clone:	1F7F5
Isotype:	IgG1
Purification:	purified

Target Details

Target:	Cyclin D1 (CCND1)
Alternative Name:	CCND1 (CCND1 Products)
Background:	Description: The protein encoded by this gene belongs to the highly conserved cyclin family, whose members are characterized by a dramatic periodicity in protein abundance throughout

Target Details

the cell cycle. Cyclins function as regulators of CDK kinases. Different cyclins exhibit distinct expression and degradation patterns which contribute to the temporal coordination of each mitotic event. This cyclin forms a complex with and functions as a regulatory subunit of CDK4 or CDK6, whose activity is required for cell cycle G1/S transition. This protein has been shown to interact with tumor suppressor protein Rb and the expression of this gene is regulated positively by Rb. Mutations, amplification and overexpression of this gene, which alters cell cycle progression, are observed frequently in a variety of human cancers.

Aliases: BCL1, PRAD1, U21B31, D11S287E

Molecular Weight:	33.7 kDa
-------------------	----------

Gene ID:	595
----------	-----

Pathways:	PI3K-Akt Signaling , Cell Division Cycle , Mitotic G1-G1/S Phases , ER-Nucleus Signaling
-----------	--

Application Details

Application Notes:	WB:1:500 - 1:2000, IHC:1:200 - 1:1000, FCM:1:200 - 1:400, ELISA:1:10000,
--------------------	--

Restrictions:	For Research Use only
---------------	-----------------------

Handling

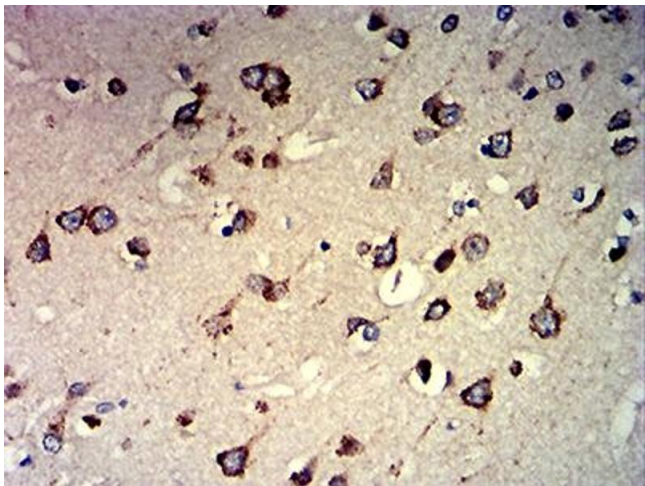
Buffer:	Purified antibody in PBS with 0.05 % sodium azide
---------	---

Preservative:	Sodium azide
---------------	--------------

Precaution of Use:	This product contains Sodium azide: a POISONOUS AND HAZARDOUS SUBSTANCE which should be handled by trained staff only.
--------------------	--

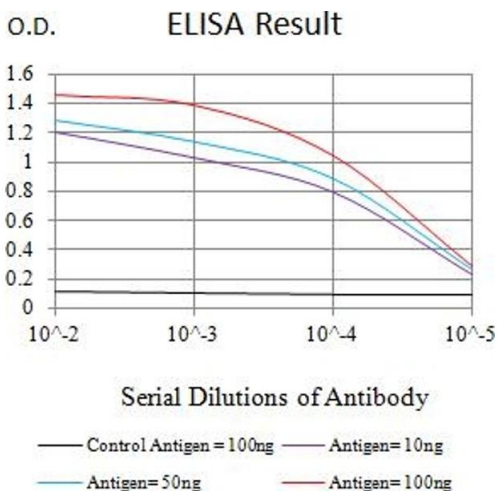
Storage:	4 °C/-20 °C
----------	-------------

Storage Comment:	4°C, -20°C for long term storage
------------------	----------------------------------



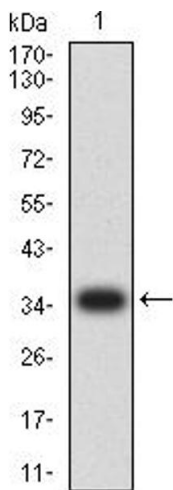
Immunohistochemistry

Image 1. Immunohistochemical analysis of paraffin-embedded brain tissues using CCND1 mouse mAb with DAB staining.



ELISA

Image 2. Black line: Control Antigen (100 ng),Purple line: Antigen (10 ng), Blue line: Antigen (50 ng), Red line:Antigen (100 ng)



Western Blotting

Image 3. Western blot analysis using CCND1 mAb against human CCND1 (AA: 1-295) recombinant protein. (Expected MW is 36.6 kDa)

Please check the [product details page](#) for more images. Overall 7 images are available for ABIN7193695.