

Datasheet for ABIN7193699
anti-ERCC1 antibody (AA 1-297)[Go to Product page](#)

7 Images

Overview

Quantity:	0.1 mg
Target:	ERCC1
Binding Specificity:	AA 1-297
Reactivity:	Human, Mouse
Host:	Mouse
Clonality:	Monoclonal
Conjugate:	This ERCC1 antibody is un-conjugated
Application:	Western Blotting (WB), ELISA, Immunohistochemistry (IHC), Flow Cytometry (FACS)

Product Details

Immunogen:	Purified recombinant fragment of human ERCC1 (AA: 1-297) expressed in E. coli.
Clone:	5A2D1
Isotype:	IgG1
Purification:	purified

Target Details

Target:	ERCC1
Alternative Name:	ERCC1 (ERCC1 Products)
Background:	Description: The product of this gene functions in the nucleotide excision repair pathway, and is required for the repair of DNA lesions such as those induced by UV light or formed by

Target Details

electrophilic compounds including cisplatin. The encoded protein forms a heterodimer with the XPF endonuclease (also known as ERCC4), and the heterodimeric endonuclease catalyzes the 5' incision in the process of excising the DNA lesion. The heterodimeric endonuclease is also involved in recombinational DNA repair and in the repair of inter-strand crosslinks. Mutations in this gene result in cerebrooculofacioskeletal syndrome, and polymorphisms that alter expression of this gene may play a role in carcinogenesis. Multiple transcript variants encoding different isoforms have been found for this gene. The last exon of this gene overlaps with the CD3e molecule, epsilon associated protein gene on the opposite strand.

Aliases: UV20, COFS4, RAD10

Molecular Weight:	32.5 kDa
-------------------	----------

Gene ID:	2067
----------	------

Pathways:	DNA Damage Repair , Production of Molecular Mediator of Immune Response
-----------	---

Application Details

Application Notes:	WB:1:500 - 1:2000, IHC:1:200 - 1:1000, FCM:1:200 - 1:400, ELISA:1:10000,
--------------------	--

Restrictions:	For Research Use only
---------------	-----------------------

Handling

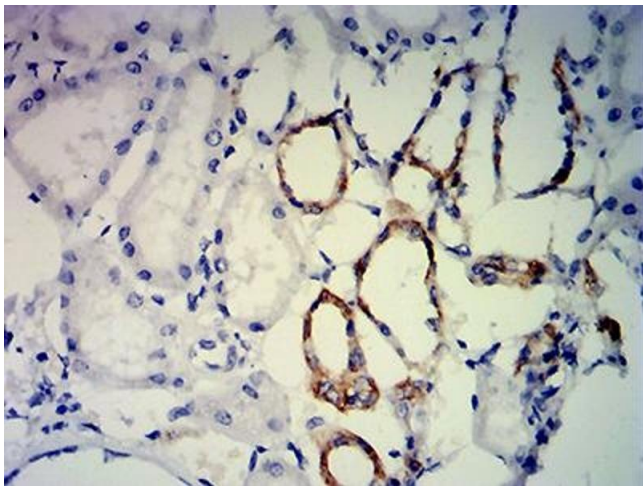
Buffer:	Purified antibody in PBS with 0.05 % sodium azide
---------	---

Preservative:	Sodium azide
---------------	--------------

Precaution of Use:	This product contains Sodium azide: a POISONOUS AND HAZARDOUS SUBSTANCE which should be handled by trained staff only.
--------------------	--

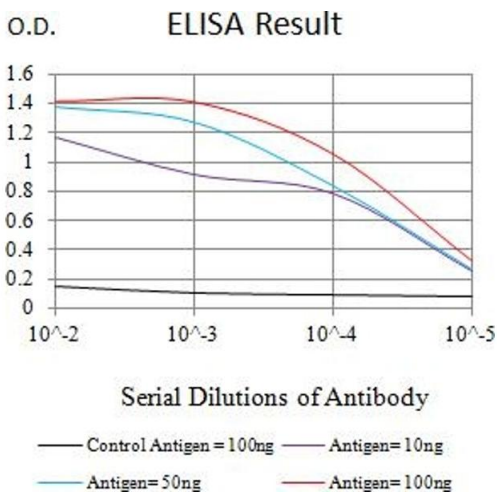
Storage:	4 °C/-20 °C
----------	-------------

Storage Comment:	4°C, -20°C for long term storage
------------------	----------------------------------



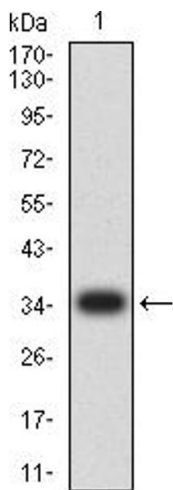
Immunohistochemistry

Image 1. Immunohistochemical analysis of paraffin-embedded kidney tissues using ERCC1 mouse mAb with DAB staining.



ELISA

Image 2. Black line: Control Antigen (100 ng),Purple line: Antigen (10 ng), Blue line: Antigen (50 ng), Red line:Antigen (100 ng)



Western Blotting

Image 3. Western blot analysis using ERCC1 mAb against human ERCC1 (AA: 1-297) recombinant protein. (Expected MW is 35.5 kDa)

Please check the [product details page](#) for more images. Overall 7 images are available for ABIN7193699.