

Datasheet for ABIN7193700
anti-MSH6 antibody (AA 374-540)



[Go to Product page](#)

6 Images

Overview

Quantity:	100 µL
Target:	MSH6
Binding Specificity:	AA 374-540
Reactivity:	Human
Host:	Mouse
Clonality:	Monoclonal
Conjugate:	This MSH6 antibody is un-conjugated
Application:	Western Blotting (WB), Immunohistochemistry (IHC), ELISA, Flow Cytometry (FACS)

Product Details

Immunogen:	Purified recombinant fragment of human MSH6 (AA: 374-540) expressed in E. coli.
Clone:	2E3A10
Isotype:	IgG2b
Purification:	purified

Target Details

Target:	MSH6
Alternative Name:	MSH6 (MSH6 Products)
Background:	Description: This gene encodes a member of the DNA mismatch repair MutS family. In E. coli, the MutS protein helps in the recognition of mismatched nucleotides prior to their repair. A

Target Details

highly conserved region of approximately 150 aa, called the Walker-A adenine nucleotide binding motif, exists in MutS homologs. The encoded protein heterodimerizes with MSH2 to form a mismatch recognition complex that functions as a bidirectional molecular switch that exchanges ADP and ATP as DNA mismatches are bound and dissociated. Mutations in this gene may be associated with hereditary nonpolyposis colon cancer, colorectal cancer, and endometrial cancer. Transcripts variants encoding different isoforms have been described.

Aliases: GTBP, HSAP, p160, GTMBP, HNPCC5

Molecular Weight: 152.8 kDa

Gene ID: 2956

Pathways: [DNA Damage Repair](#), [Chromatin Binding](#), [Production of Molecular Mediator of Immune Response](#)

Application Details

Application Notes: WB:1:500 - 1:2000, IHC:1:200 - 1:1000, FCM:1:200 - 1:400, ELISA:1:10000,

Restrictions: For Research Use only

Handling

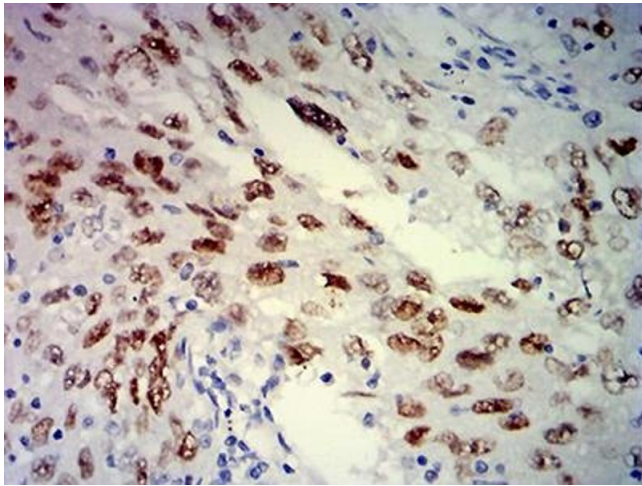
Buffer: Purified antibody in PBS with 0.05 % sodium azide

Preservative: Sodium azide

Precaution of Use: This product contains Sodium azide: a POISONOUS AND HAZARDOUS SUBSTANCE which should be handled by trained staff only.

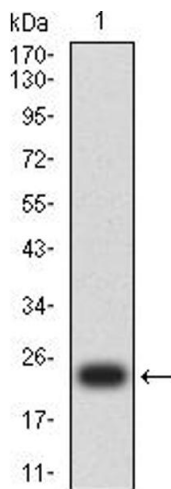
Storage: 4 °C/-20 °C

Storage Comment: 4°C, -20°C for long term storage



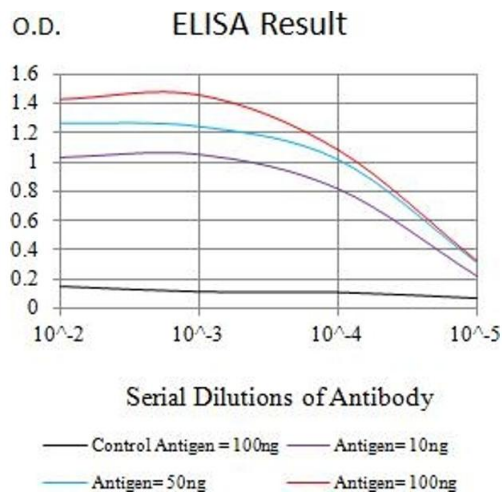
Immunohistochemistry

Image 1. Immunohistochemical analysis of paraffin-embedded lung cancer tissues using MSH6 mouse mAb with DAB staining.



Western Blotting

Image 2. Western blot analysis using MSH6 mAb against human MSH6 (AA: 374-540) recombinant protein. (Expected MW is 22.6 kDa)



ELISA

Image 3. Black line: Control Antigen (100 ng),Purple line: Antigen (10 ng), Blue line: Antigen (50 ng), Red line:Antigen (100 ng)

Please check the [product details page](#) for more images. Overall 6 images are available for ABIN7193700.