

Datasheet for ABIN7193704

anti-Cytokeratin 13 antibody (AA 104-458)**8** Images[Go to Product page](#)

Overview

Quantity:	100 µL
Target:	Cytokeratin 13 (KRT13)
Binding Specificity:	AA 104-458
Reactivity:	Human
Host:	Mouse
Clonality:	Monoclonal
Conjugate:	This Cytokeratin 13 antibody is un-conjugated
Application:	Western Blotting (WB), Immunohistochemistry (IHC), ELISA, Flow Cytometry (FACS)

Product Details

Purpose:	KRT13 Antibody
Immunogen:	Purified recombinant fragment of human KRT13 (AA: 104-458) expressed in E. Coli.
Clone:	7D7A2
Isotype:	IgG1
Purification:	Purified antibody

Target Details

Target:	Cytokeratin 13 (KRT13)
Alternative Name:	KRT13 (KRT13 Products)
Background:	Description:

Target Details

The protein encoded by this gene is a member of the keratin gene family. The keratins are intermediate filament proteins responsible for the structural integrity of epithelial cells and are subdivided into cytokeratins and hair keratins. Most of the type I cytokeratins consist of acidic proteins which are arranged in pairs of heterotypic keratin chains. This type I cytokeratin is paired with keratin 4 and expressed in the suprabasal layers of non-cornified stratified epithelia. Mutations in this gene and keratin 4 have been associated with the autosomal dominant disorder White Sponge Nevus. The type I cytokeratins are clustered in a region of chromosome 17q21.2. Alternative splicing of this gene results in multiple transcript variants, however, not all variants have been described.

Aliases: K13, CK13, WSN2

Molecular Weight: 49.5kDa

Gene ID: 3860

Application Details

Application Notes: ELISA: 1/10000
FCM: 1/200 - 1/400

Restrictions: For Research Use only

Handling

Format: Liquid

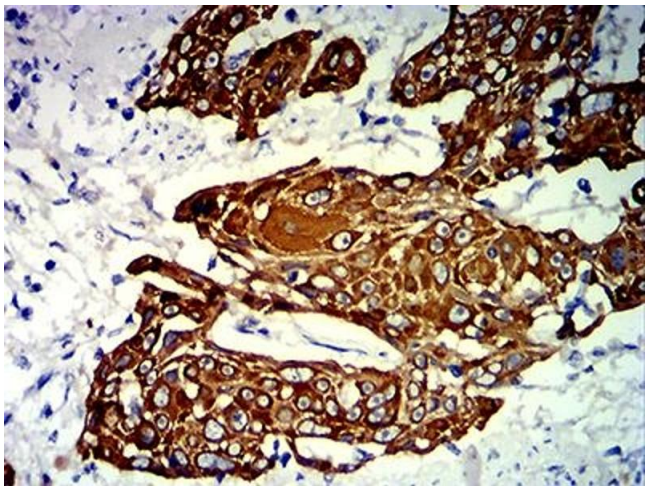
Buffer: Purified antibody in PBS with 0.05 % sodium azide.

Preservative: Sodium azide

Precaution of Use: This product contains Sodium azide: a POISONOUS AND HAZARDOUS SUBSTANCE which should be handled by trained staff only.

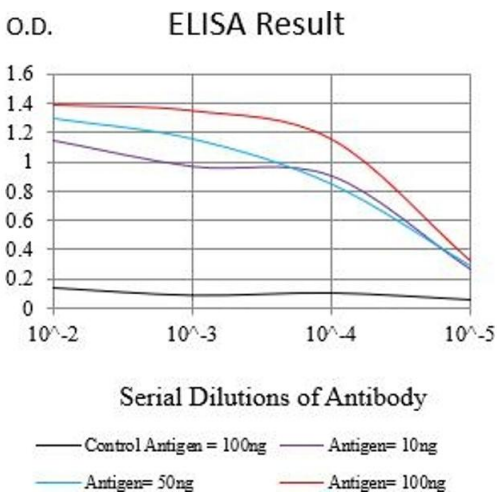
Storage: 4 °C,-20 °C

Storage Comment: Store at 4°C short term. Aliquot and store at -20°C long term. Avoid freeze/thaw cycles.



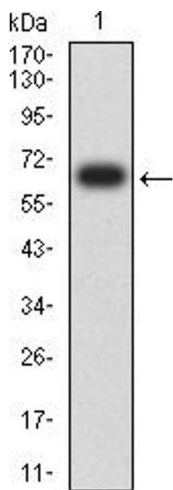
Immunohistochemistry

Image 1. Immunohistochemical analysis of paraffin-embedded esophageal cancer tissues using KRT13 mouse mAb with DAB staining.



ELISA

Image 2. Black line: Control Antigen (100 ng),Purple line: Antigen (10 ng), Blue line: Antigen (50 ng), Red line:Antigen (100 ng)



Western Blotting

Image 3. Western blot analysis using KRT13 mAb against human KRT13 (AA: 104-458) recombinant protein. (Expected MW is 66.5 kDa)

Please check the [product details page](#) for more images. Overall 8 images are available for ABIN7193704.