

Datasheet for ABIN7193708  
**anti-KRT6A antibody (AA 253-352)**[Go to Product page](#)

## 6 Images

## Overview

Quantity:	0.1 mg
Target:	KRT6A
Binding Specificity:	AA 253-352
Reactivity:	Human
Host:	Mouse
Clonality:	Monoclonal
Conjugate:	This KRT6A antibody is un-conjugated
Application:	Western Blotting (WB), ELISA, Immunocytochemistry (ICC), Flow Cytometry (FACS)

## Product Details

Immunogen:	Purified recombinant fragment of human KRT6A (AA: 253-352) expressed in E. coli.
Clone:	7E3D1
Isotype:	IgG2b
Purification:	purified

## Target Details

Target:	KRT6A
Alternative Name:	KRT6A ( <a href="#">KRT6A Products</a> )
Background:	Description: The protein encoded by this gene is a member of the keratin gene family. The type II cytokeratins consist of basic or neutral proteins which are arranged in pairs of heterotypic

## Target Details

keratin chains coexpressed during differentiation of simple and stratified epithelial tissues. As many as six of this type II cytokeratin (KRT6) have been identified, the multiplicity of the genes is attributed to successive gene duplication events. The genes are expressed with family members KRT16 and/or KRT17 in the filiform papillae of the tongue, the stratified epithelial lining of oral mucosa and esophagus, the outer root sheath of hair follicles, and the glandular epithelia. This KRT6 gene in particular encodes the most abundant isoform. Mutations in these genes have been associated with pachyonychia congenita. In addition, peptides from the C-terminal region of the protein have antimicrobial activity against bacterial pathogens. The type II cytokeratins are clustered in a region of chromosome 12q12-q13.

Aliases: KRT6A, K6A, K6C, K6D, PC3, CK6C, CK6D, CK-6C, CK-6E, KRT6C, KRT6D

Molecular Weight:	60 kDa
-------------------	--------

Gene ID:	3853
----------	------

## Application Details

Application Notes:	WB:1:500 - 1:2000, ICC:1:200 - 1:1000, FCM:1:200 - 1:400, ELISA:1:10000,
--------------------	--

Restrictions:	For Research Use only
---------------	-----------------------

## Handling

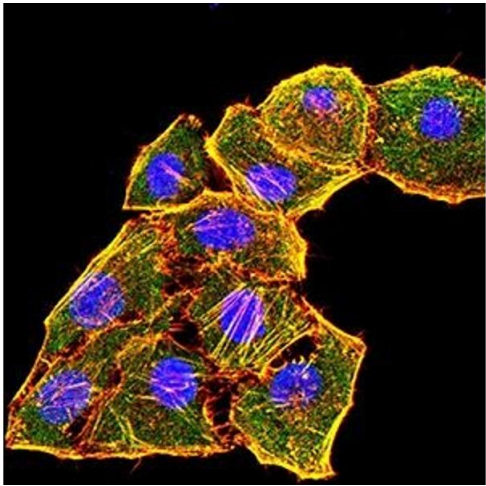
Buffer:	Purified antibody in PBS with 0.05 % sodium azide
---------	---

Preservative:	Sodium azide
---------------	--------------

Precaution of Use:	This product contains Sodium azide: a POISONOUS AND HAZARDOUS SUBSTANCE which should be handled by trained staff only.
--------------------	--

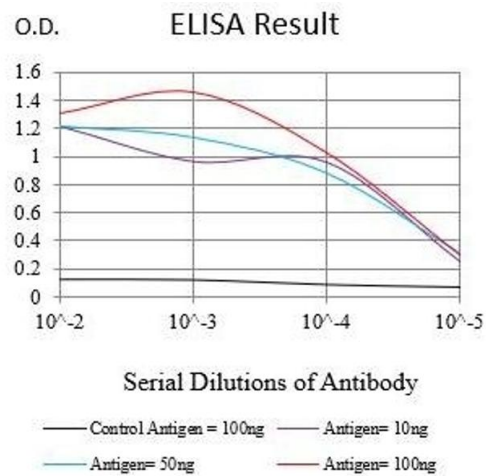
Storage:	4 °C/-20 °C
----------	-------------

Storage Comment:	4°C, -20°C for long term storage
------------------	----------------------------------



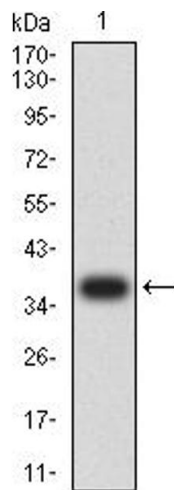
**Immunofluorescence**

**Image 1.** Immunofluorescence analysis of HeLa cells using KRT6A mouse mAb (green). Blue: DRAQ5 fluorescent DNA dye. Red: Actin filaments have been labeled with Alexa Fluor- 555 phalloidin. Secondary antibody from Fisher (Cat#: 35503)



**ELISA**

**Image 2.** Black line: Control Antigen (100 ng),Purple line: Antigen (10 ng), Blue line: Antigen (50 ng), Red line:Antigen (100 ng)



**Western Blotting**

**Image 3.** Western blot analysis using KRT6A mAb against human KRT6A (AA: 253-352) recombinant protein. (Expected MW is 37.2 kDa)

Please check the [product details page](#) for more images. Overall 6 images are available for ABIN7193708.