

Datasheet for ABIN7193974

## anti-IL1A antibody

### 5 Images



[Go to Product page](#)

### Overview

Quantity:	0.1 mg
Target:	IL1A
Reactivity:	Human
Host:	Mouse
Clonality:	Monoclonal
Application:	Western Blotting (WB), ELISA, Flow Cytometry (FACS)

### Product Details

Immunogen:	Purified recombinant fragment of human IL1A (AA: extra(155-354)) expressed in E. coli.
Clone:	6G4A5
Isotype:	IgG1
Purification:	purified

### Target Details

Target:	IL1A
Alternative Name:	IL1A ( <a href="#">IL1A Products</a> )
Background:	<p>Description: The protein encoded by this gene is a member of the interleukin 1 cytokine family. This cytokine is a pleiotropic cytokine involved in various immune responses, inflammatory processes, and hematopoiesis. This cytokine is produced by monocytes and macrophages as a proprotein, which is proteolytically processed and released in response to cell injury, and thus induces apoptosis. This gene and eight other interleukin 1 family genes form a cytokine gene</p>

## Target Details

cluster on chromosome 2. It has been suggested that the polymorphism of these genes is associated with rheumatoid arthritis and Alzheimer's disease.

Aliases: IL1, IL-1A, IL1F1, IL1-ALPHA, IL-1 alpha

Molecular Weight: 30.6 kDa

Gene ID: 3552

Pathways: [NF-kappaB Signaling](#), [Autophagy](#), [Cancer Immune Checkpoints](#)

## Application Details

Application Notes: WB:1:500 - 1:2000, FCM:1:200 - 1:400, ELISA:1:10000,

Restrictions: For Research Use only

## Handling

Buffer: Purified antibody in PBS with 0.05 % sodium azide

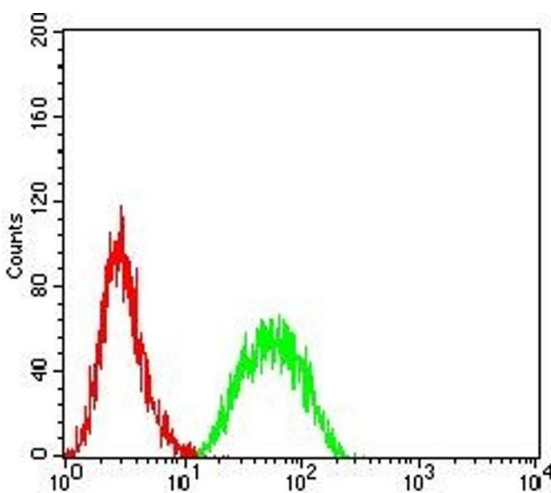
Preservative: Sodium azide

Precaution of Use: This product contains Sodium azide: a POISONOUS AND HAZARDOUS SUBSTANCE which should be handled by trained staff only.

Storage: 4 °C/-20 °C

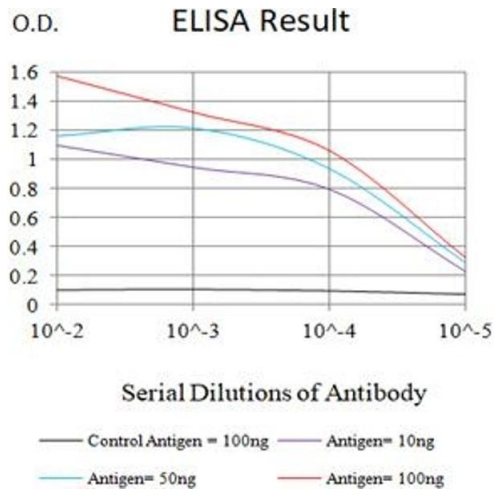
Storage Comment: 4°C, -20°C for long term storage

## Images



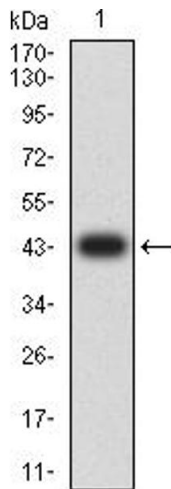
### Flow Cytometry

**Image 1.** Flow cytometric analysis of THP-1 cells using IL1A mouse mAb (green) and negative control (red).



### ELISA

**Image 2.** Black line: Control Antigen (100 ng), Purple line: Antigen (10 ng), Blue line: Antigen (50 ng), Red line: Antigen (100 ng)



### Western Blotting

**Image 3.** Western blot analysis using IL1A mAb against human IL1A (AA: 113-271) recombinant protein. (Expected MW is 44 kDa)

Please check the [product details page](#) for more images. Overall 5 images are available for ABIN7193974.