

Datasheet for ABIN7193976
anti-IL-1 beta antibody (AA 117-269)[Go to Product page](#)

8 Images

Overview

Quantity:	0.1 mg
Target:	IL-1 beta (IL1B)
Binding Specificity:	AA 117-269
Reactivity:	Human
Host:	Mouse
Clonality:	Monoclonal
Conjugate:	This IL-1 beta antibody is un-conjugated
Application:	Western Blotting (WB), ELISA, Immunohistochemistry (IHC), Immunocytochemistry (ICC), Flow Cytometry (FACS)

Product Details

Immunogen:	Purified recombinant fragment of human IL1B (AA: 117-269) expressed in E. coli.
Clone:	6F12D5
Isotype:	IgG1
Purification:	purified

Target Details

Target:	IL-1 beta (IL1B)
Alternative Name:	IL1B (IL1B Products)
Background:	Description: The protein encoded by this gene is a member of the interleukin 1 cytokine family.

Target Details

This cytokine is produced by activated macrophages as a proprotein, which is proteolytically processed to its active form by caspase 1. This cytokine is an important mediator of the inflammatory response, and is involved in a variety of cellular activities, including cell proliferation, differentiation, and apoptosis. The induction of cyclooxygenase2 by this cytokine in the central nervous system is found to contribute to inflammatory pain hypersensitivity. This gene and eight other interleukin 1 family genes form a cytokine gene cluster on chromosome 2. Aliases: IL-1, IL1F2, IL1beta, IL1-BETA

Molecular Weight: 30.7 kDa

Gene ID: 3553

Pathways: [NF-kappaB Signaling](#), [Interferon-gamma Pathway](#), [TLR Signaling](#), [Negative Regulation of Hormone Secretion](#), [Cellular Response to Molecule of Bacterial Origin](#), [Carbohydrate Homeostasis](#), [Glycosaminoglycan Metabolic Process](#), [Myometrial Relaxation and Contraction](#), [Regulation of Leukocyte Mediated Immunity](#), [Positive Regulation of Immune Effector Process](#), [Autophagy](#), [Cancer Immune Checkpoints](#), [Inflammasome](#)

Application Details

Application Notes: WB:1:500 - 1:2000, IHC:1:200 - 1:1000, ICC:1:200 - 1:1000, FCM:1:200 - 1:400, ELISA:1:10000,

Restrictions: For Research Use only

Handling

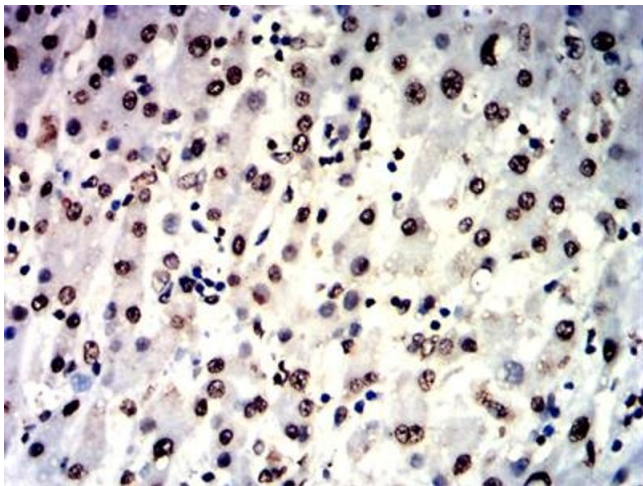
Buffer: Purified antibody in PBS with 0.05 % sodium azide

Preservative: Sodium azide

Precaution of Use: This product contains Sodium azide: a POISONOUS AND HAZARDOUS SUBSTANCE which should be handled by trained staff only.

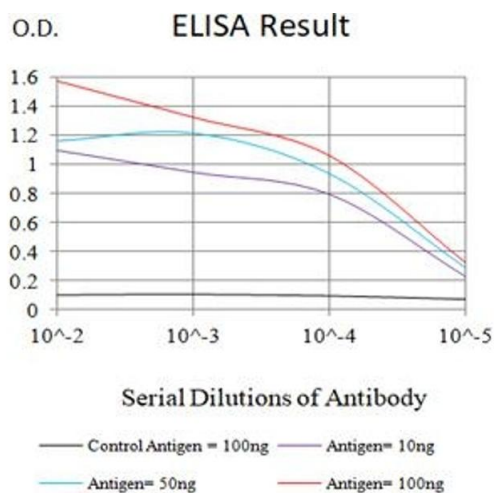
Storage: 4 °C/-20 °C

Storage Comment: 4°C, -20°C for long term storage



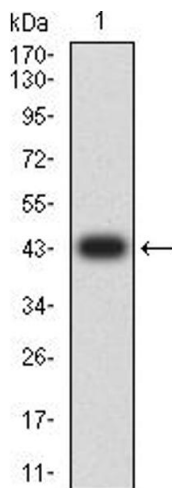
Immunohistochemistry

Image 1. Immunohistochemical analysis of paraffin-embedded liver cancer tissues using IL1B mouse mAb with DAB staining.



ELISA

Image 2. Black line: Control Antigen (100 ng),Purple line: Antigen (10 ng), Blue line: Antigen (50 ng), Red line:Antigen (100 ng)



Western Blotting

Image 3. Western blot analysis using IL1B mAb against human IL1B (AA: 117-269) recombinant protein. (Expected MW is 43.4 kDa)

Please check the [product details page](#) for more images. Overall 8 images are available for ABIN7193976.