



Datasheet for ABIN719411  
**anti-SDHB antibody (AA 201-280)**



[Go to Product page](#)

2 Images

Overview

Quantity:	100 µL
Target:	SDHB
Binding Specificity:	AA 201-280
Reactivity:	Human
Host:	Rabbit
Clonality:	Polyclonal
Conjugate:	This SDHB antibody is un-conjugated
Application:	Western Blotting (WB), ELISA, Flow Cytometry (FACS), Immunohistochemistry (Paraffin-embedded Sections) (IHC (p)), Immunofluorescence (Cultured Cells) (IF (cc)), Immunofluorescence (Paraffin-embedded Sections) (IF (p)), Immunohistochemistry (Frozen Sections) (IHC (fro))

Product Details

Immunogen:	KLH conjugated synthetic peptide derived from human SDHB
Isotype:	IgG
Cross-Reactivity:	Human
Predicted Reactivity:	Mouse,Rat,Dog,Cow,Pig,Horse,Rabbit
Purification:	Purified by Protein A.

Target Details

Target:	SDHB
---------	------

## Target Details

---

Alternative Name:	SDHB ( <a href="#">SDHB Products</a> )
Background:	Synonyms: IP, SDH, CWS2, PGL4, SDH1, SDH2, SDHIP, Succinate dehydrogenase [ubiquinone] iron-sulfur subunit, mitochondrial, Iron-sulfur subunit of complex II, SDHB Background: Iron-sulfur protein (IP) subunit of succinate dehydrogenase (SDH) that is involved in complex II of the mitochondrial electron transport chain and is responsible for transferring electrons from succinate to ubiquinone (coenzyme Q).
Gene ID:	6390
UniProt:	<a href="#">P21912</a>

## Application Details

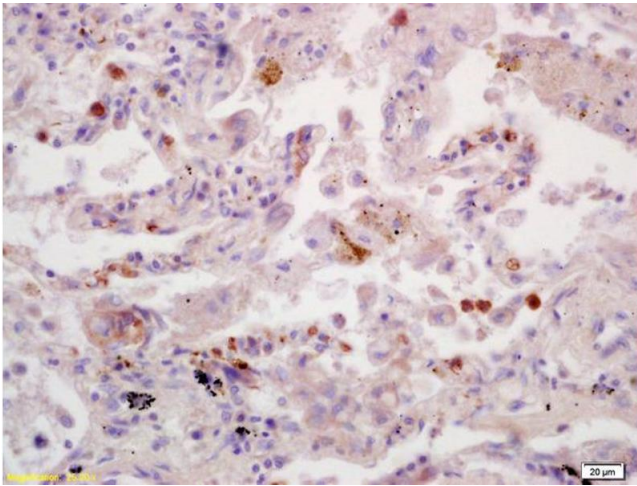
---

Application Notes:	WB 1:300-5000 ELISA 1:500-1000 FCM 1:20-100 IHC-P 1:200-400 IHC-F 1:100-500 IF(IHC-P) 1:50-200 IF(IHC-F) 1:50-200 IF(ICC) 1:50-200
Restrictions:	For Research Use only

## Handling

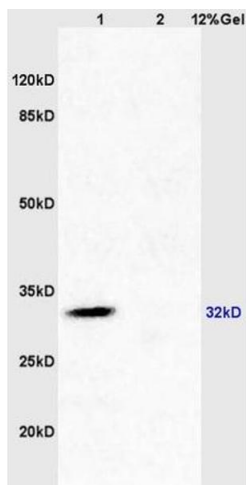
---

Format:	Liquid
Concentration:	1 µg/µL
Buffer:	0.01M TBS( pH 7.4) with 1 % BSA, 0.02 % Proclin300 and 50 % Glycerol.
Preservative:	ProClin
Precaution of Use:	This product contains ProClin: a POISONOUS AND HAZARDOUS SUBSTANCE, which should be handled by trained staff only.
Storage:	4 °C,-20 °C
Storage Comment:	Shipped at 4°C. Store at -20°C for one year. Avoid repeated freeze/thaw cycles.
Expiry Date:	12 months



### Immunohistochemistry

**Image 1.** Formalin-fixed and paraffin embedded human lung carcinoma labeled with Anti-SDHB Polyclonal Antibody, Unconjugated (ABIN719411) at 1:200 followed by conjugation to the secondary antibody and DAB staining.



### SDS-PAGE

**Image 2.** Lane 1: mouse brain lysates Lane 2: mouse kidney lysates probed with Anti SDHB Polyclonal Antibody, Unconjugated (ABIN719411) at 1:200 in 4 °C. Followed by conjugation to secondary antibody at 1:3000 90min in 37 °C. Predicted band 32kD. Observed band size: 32kD.