

Datasheet for ABIN7194188

ALT Protein (His tag)**1** Image[Go to Product page](#)

Overview

Quantity:	10 µg
Target:	ALT
Origin:	Rat
Source:	Baculovirus infected Insect Cells
Protein Type:	Recombinant
Purification tag / Conjugate:	This ALT protein is labelled with His tag.

Product Details

Purpose:	Recombinant Rat GPT1/GPT Protein (His Tag)
Sequence:	Met 1-Ser 496
Characteristics:	A DNA sequence encoding the rat Gpt1 (NP_112301.1) (Met 1-Ser 496) with a C-terminal polyhistidine tag was expressed.
Purity:	> 95 % as determined by SDS-PAGE
Endotoxin Level:	< 1.0 EU per µg of the protein as determined by the LAL method

Target Details

Target:	ALT
Alternative Name:	GPT1/GPT (ALT Products)
Background:	Background: Alanine aminotransferase (ALT), also known as glutamate pyruvate transaminase (GPT), is a pyridoxal enzyme which belongs to the class-I pyridoxal-phosphate-dependent aminotransferase family, Alanine aminotransferase subfamily. Gpt / Gpt1 / ALT catalyses the

Target Details

reversible interconversion of L-alanine and 2-oxoglutarate to pyruvate and L-glutamate, and plays a key role in the intermediary metabolism of glucose and amino acids. Gpt / Gpt1 / ALT is expressed in Liver, kidney, heart, and skeletal muscles and it expresses at moderate levels in the adipose tissue. As a key enzyme for gluconeogenesis, Gpt is a widely-used serum marker for liver injury. Two ALT isoenzymes have been identified, ALT1 and ALT2 (GPT1 and GPT2), which are encoded by separate genes and share significant sequence homology, but differ in their expression patterns. GPT1/GPT is widely distributed and mainly expressed in intestine, liver, fat tissues, colon, muscle, and heart, in the order of high to low expression level. Serum activity levels of this enzyme are routinely used as a biomarker of liver injury caused by drug toxicity, infection, alcohol, and steatosis.

Synonym: Gpt1,Gpt,ALT1

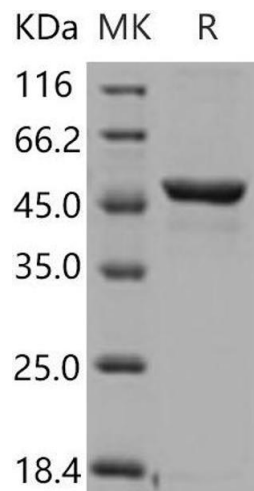
Molecular Weight:	55 kDa
NCBI Accession:	NP_112301

Application Details

Restrictions:	For Research Use only
---------------	-----------------------

Handling

Format:	Lyophilized
Reconstitution:	Please refer to the printed manual for detailed information.
Buffer:	Lyophilized from sterile 50 mM Tris, 100 mM NaCl, pH 8.0, 10 % glycerol, 0.5 mM TCEP
Storage:	4 °C,-20 °C,-80 °C
Storage Comment:	Generally, lyophilized proteins are stable for up to 12 months when stored at -20 to -80°C. Reconstituted protein solution can be stored at 4-8°C for 2-7 days. Aliquots of reconstituted samples are stable at < -20°C for 3 months.



Western Blotting

Image 1.