

Datasheet for ABIN7194384

BACE2 Protein (His tag)[Go to Product page](#)**1** Image

Overview

Quantity:	100 µg
Target:	BACE2
Origin:	Mouse
Source:	HEK-293 Cells
Protein Type:	Recombinant
Biological Activity:	Active
Purification tag / Conjugate:	This BACE2 protein is labelled with His tag.

Product Details

Purpose:	Recombinant Mouse BACE2/Beta secretase 2 Protein (His Tag)(Active)
Sequence:	Met1-Pro462
Characteristics:	A DNA sequence encoding the mouse BACE2 (Q9JL18) (Met1-Pro462) was expressed with a C-terminal polyhistidine tag.
Purity:	> 95 % as determined by SDS-PAGE
Endotoxin Level:	< 1.0 EU per µg of the protein as determined by the LAL method.
Biological Activity Comment:	Measured by its ability to cleave a fluorogenic peptide substrate Mca-KPLGL-Dpa-AR-NH2 .The specific activity is >50 pmoles/min/µg.

Target Details

Target:	BACE2
---------	-------

Target Details

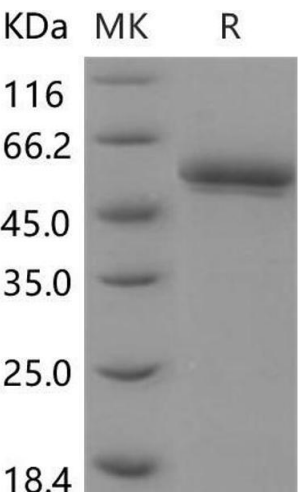
Alternative Name:	BACE2/Beta secretase 2 (BACE2 Products)
Background:	<p>Background: BACE2, also known as beta secretase 2, belongs to the peptidase A1 family. It is a protease known to be an important enzyme involved in the cellular pathways. BACE2 has been shown to interact with GGA1 and GGA2. It is the major β-secretase in vivo. BACE2 is located on chromosome 21 and may play a role in alzheimer's disease pathogenesis in down syndrome(DS). Overexpression of BACE2 by lentivirus markedly reduced amyloid β protein production in primary neurons. Despite an extra copy of the BACE2 gene in DS and the increase of its transcription, BACE2 protein levels are unchanged.</p> <p>Synonym: 1110059C24Rik;AEPLC;AI850424;ALP56;ARP1;ASP21;BAE2;CDA13;CEAP1;DRAP</p>
Molecular Weight:	49.2 kDa
UniProt:	Q9JL18

Application Details

Restrictions:	For Research Use only
---------------	-----------------------

Handling

Format:	Lyophilized
Reconstitution:	Please refer to the printed manual for detailed information.
Buffer:	Lyophilized from sterile PBS, pH 7.4
Storage:	4 °C,-20 °C,-80 °C
Storage Comment:	<p>Generally, lyophilized proteins are stable for up to 12 months when stored at -20 to -80°C.</p> <p>Reconstituted protein solution can be stored at 4-8°C for 2-7 days. Aliquots of reconstituted samples are stable at < -20°C for 3 months.</p>



Western Blotting

Image 1.