

Datasheet for ABIN7194488

**CLEC4F Protein****1** Image[Go to Product page](#)

## Overview

Quantity:	50 µg
Target:	CLEC4F
Origin:	Rat
Source:	HEK-293 Cells
Protein Type:	Recombinant

## Product Details

Purpose:	Recombinant Rat CLEC4F/CLECSF13 Protein
Sequence:	Arg70-Ser550
Characteristics:	A DNA sequence encoding the rat CLEC4F(NP_446205.1) (Arg70-Ser550) was expressed with two additional amino acids (Gly & Pro) at the N-terminus.
Purity:	> 95 % as determined by SDS-PAGE
Endotoxin Level:	< 1.0 EU per µg of the protein as determined by the LAL method

## Target Details

Target:	CLEC4F
Alternative Name:	CLEC4F/CLECSF13 ( <a href="#">CLEC4F Products</a> )
Background:	Background: CLEC4F, a member of C-type lectins, was firstly purified from rat liver extract with high binding affinity to fucose, galactose and N-acetylgalactosamine, and un-sialylated glucosphingolipids with GalNAc or Gal terminus. However, the biological functions of CLEC4F have not been elucidated. Histochemical staining showed that mouse CLEC4F(mCLEC4F) is

## Target Details

only expressed on F4/80+ cells localized in liver, and is undetectable in bone marrow, spleen, lymph nodes, or other tissues in adult mice. However, mCLEC4F is detected in the liver of embryonic day 11.5 (E11.5), which is 1.5 day earlier than the formation of liver (E10) and is 3.5 day earlier than the formation of bone marrow (E15-16). Moreover, recombinant mCLEC4F.Fc binds to alpha-galactoceramide in a Ca<sup>++</sup>-dependent manner, and both galactose and ceramide can partially inhibit CLEC4F.Fc binding to alpha-galactoceramide. Interestingly, mCLEC4F-deficient (mCEC4F k/o) mice produced far less cytokines than wild type littermates after intravenous injection of alpha-galactoceramide. This suggests that mCLEC4F is not only a specific marker for Kupffer cells, but is also critical for the presentation of glycolipid antigen to NKT cells.

Synonym: CLEC4F,Clecsf13,Kclr

Molecular Weight: 53.7 kDa

NCBI Accession: [NP\\_446205](#)

## Application Details

Restrictions: For Research Use only

## Handling

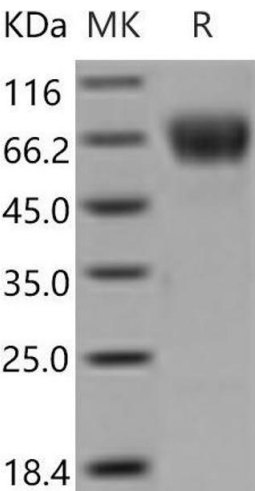
Format: Lyophilized

Reconstitution: Please refer to the printed manual for detailed information.

Buffer: Lyophilized from sterile PBS, pH 7.4

Storage: 4 °C,-20 °C,-80 °C

Storage Comment: Generally, lyophilized proteins are stable for up to 12 months when stored at -20 to -80°C. Reconstituted protein solution can be stored at 4-8°C for 2-7 days. Aliquots of reconstituted samples are stable at < -20°C for 3 months.



**Western Blotting**

**Image 1.**