

Datasheet for ABIN7194598

CPA1 Protein (His tag)[Go to Product page](#)**1** Image

Overview

Quantity:	50 µg
Target:	CPA1
Origin:	Mouse
Source:	HEK-293 Cells
Protein Type:	Recombinant
Biological Activity:	Active
Purification tag / Conjugate:	This CPA1 protein is labelled with His tag.

Product Details

Purpose:	Recombinant Mouse Carboxypeptidase A1/CPA1 Protein (His Tag)(Active)
Sequence:	Met 1-Tyr 419
Characteristics:	A DNA sequence encoding the mouse CPA1 (NP_079626.2) (Met 1-Tyr 419) precursor was expressed with a C-terminal polyhistidine tag.
Purity:	> 96 % as determined by SDS-PAGE
Endotoxin Level:	< 1.0 EU per µg of the protein as determined by the LAL method.
Biological Activity Comment:	Measured by its ability to cleave the colorimetric peptide substrate Ac-Phe-Thiaphe-OH in the presence of 5,5'Dithiobis (2-nitrobenzoic acid) (DTNB). The specific activity is >6,000 pmoles/min/µg.

Target Details

Target:	CPA1
---------	------

Target Details

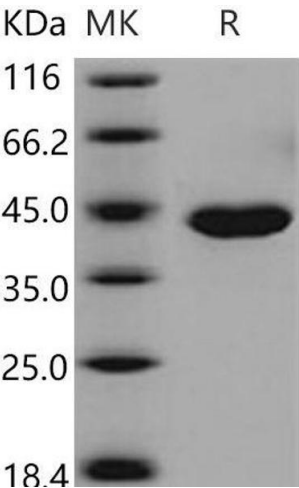
Alternative Name:	Carboxypeptidase A1/CPA1 (CPA1 Products)
Background:	<p>Background: Carboxypeptidase A1 (CPA1) is secreted as a pancreatic procarboxypeptidase, and cleaves the C-terminal amide or ester bond of peptides that have a free C-terminal carboxyl group, with the preference of residues with aromatic or branched aliphatic side chains. CPA1 comprises a signal peptide, a pro region and a mature chain, and can be activated after cleavage of the pro peptide. In contrast to procarboxypeptidase B which was always secreted by the pancreas as a monomer, procarboxypeptidase A occurs as a monomer and/or associated to one or two functionally different proteins, such as zymogen E, and is involved in zymogen inhibition. Three different forms of human pancreatic procarboxypeptidase A have been isolated.</p> <p>Synonym: 0910001L12Rik;Cpa</p>
Molecular Weight:	47 kDa
NCBI Accession:	NP_079626

Application Details

Restrictions:	For Research Use only
---------------	-----------------------

Handling

Format:	Lyophilized
Reconstitution:	Please refer to the printed manual for detailed information.
Buffer:	Lyophilized from sterile 20 mM Tris, 150 mM NaCl, pH 7.5
Storage:	4 °C, -20 °C, -80 °C
Storage Comment:	<p>Generally, lyophilized proteins are stable for up to 12 months when stored at -20 to -80°C.</p> <p>Reconstituted protein solution can be stored at 4-8°C for 2-7 days. Aliquots of reconstituted samples are stable at < -20°C for 3 months.</p>



Western Blotting

Image 1.