

Datasheet for ABIN7194677

Cathepsin E Protein (CTSE) (AA 1-397) (His tag)[Go to Product page](#)**1** Image

Overview

Quantity:	50 µg
Target:	Cathepsin E (CTSE)
Protein Characteristics:	AA 1-397
Origin:	Mouse
Source:	HEK-293 Cells
Protein Type:	Recombinant
Purification tag / Conjugate:	This Cathepsin E protein is labelled with His tag.

Product Details

Purpose:	Recombinant Mouse Cathepsin E/CTSE Protein (aa 1-397, His Tag)
Sequence:	Met 1-Pro 397
Characteristics:	A DNA sequence encoding the extracellular domain of mouse CTSE (NP_031825.2) (Met 1-Pro 397) was expressed, with a polyhistidine tag at the C-terminus.
Purity:	> 97 % as determined by SDS-PAGE
Endotoxin Level:	< 1.0 EU per µg of the protein as determined by the LAL method.

Target Details

Target:	Cathepsin E (CTSE)
Alternative Name:	Cathepsin E/CTSE (CTSE Products)
Background:	Background: Cathepsin E Protein (CTSE Protein) is a member of the peptidase C1 family that is

Target Details

a gastric aspartic protease that functions as a disulfide-linked homodimer. Cathepsin E Protein (CTSE Protein) is predominantly present in the cells of immune system and is frequently implicated in antigen processing via the MHC classII pathway which however does not appear to be involved in the digestion of dietary protein. The protein has a specificity similar to that of pepsin and pepsin. Cathepsin E Protein (CTSE Protein) is found in highest concentration in the surface of epithelial mucus-producing cells of the stomach and also been found in more than half of the gastric cancers. It appears, therefore, to be an oncofetal antigen.

Synonym: Cathepsin E, ctse, CE

Molecular Weight: 42.4 kDa

NCBI Accession: [NP_031825](#)

Application Details

Restrictions: For Research Use only

Handling

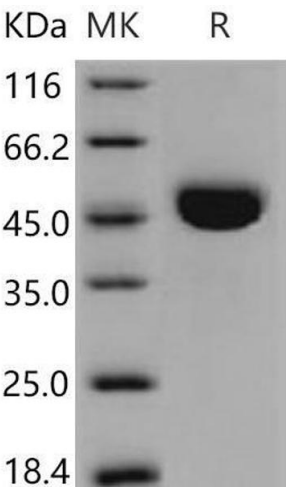
Format: Lyophilized

Reconstitution: Please refer to the printed manual for detailed information.

Buffer: Lyophilized from sterile PBS, pH 7.4

Storage: 4 °C,-20 °C,-80 °C

Storage Comment: Generally, lyophilized proteins are stable for up to 12 months when stored at -20 to -80°C. Reconstituted protein solution can be stored at 4-8°C for 2-7 days. Aliquots of reconstituted samples are stable at < -20°C for 3 months.



Western Blotting

Image 1.