

Datasheet for ABIN7194912  
**CD6 Protein (CD6) (His tag)**[Go to Product page](#)

## 1 Image

## Overview

Quantity:	100 µg
Target:	CD6
Origin:	Rat
Source:	HEK-293 Cells
Protein Type:	Recombinant
Biological Activity:	Active
Purification tag / Conjugate:	This CD6 protein is labelled with His tag.

## Product Details

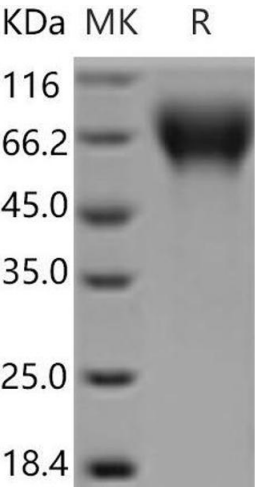
Purpose:	Recombinant Rat CD6/TP120 Protein (His Tag)(Active)
Sequence:	Met1-Asn396
Characteristics:	A DNA sequence encoding the rat CD6 (Q812A4) (Met1-Asn396) was expressed with a polyhistidine tag at the C-terminus.
Purity:	> 95 % as determined by SDS-PAGE
Endotoxin Level:	< 1.0 EU per µg of the protein as determined by the LAL method
Biological Activity Comment:	1. Immobilized rat CD6-His at 10 µg/mL (100 µL/well) can bind rat ALCAM-Fc3 , The EC50 of rat ALCAM-Fc3 is 19.5-45.5 ng/ml. 2. Measured by the ability of the immobilized protein to support the adhesion of Jurkat human acute T cell leukemia cells. When 8 x 10 <sup>4</sup> cells/well are added to ratCD6-His coated plates (10µg/mL, 100 µL/well), approximately 39.2% will adhere after 60 minutes at 37°C.

## Target Details

Target:	CD6
Alternative Name:	CD6/TP120 ( <a href="#">CD6 Products</a> )
Background:	<p>Background: T-cell differentiation antigen CD6, also known as TP120 and CD6, is a single-pass type I membrane protein which contains three SRCR domains. CD6 / TP120 is a cell surface glycoprotein expressed primarily on T cells, it may function as a costimulatory molecule and may play a role in autoreactive immune responses. CD6 / TP120 is expressed by thymocytes, mature T-cells, a subset of B-cells known as B-1 cells, and by some cells in the brain. CD6 ligand termed CD166 (previously known as activated leukocyte cell adhesion molecule, ALCAM ) has been identified and shown to be expressed on activated T cells, B cells, thymic epithelium, keratinocytes, and in rheumatoid arthritis synovial tissue. CD6 / TP120 binds to activated leukocyte cell adhesion molecule ( CD166 ), and is considered as a costimulatory molecule involved in lymphocyte activation and thymocyte development. CD6 / TP120 partially associates with the TCR / CD3 complex and colocalizes with it at the center of the mature immunological synapse (IS) on T lymphocytes. During thymic development CD6-dependent signals may contribute both to thymocyte survival, and to the overall functional avidity of selection in both man and mouse.</p> <p>Synonym: CD6</p>
Molecular Weight:	42.5 kDa
UniProt:	<a href="#">Q812A4</a>

## Application Details

Restrictions:	For Research Use only
Handling	
Format:	Lyophilized
Reconstitution:	Please refer to the printed manual for detailed information.
Buffer:	Lyophilized from sterile PBS, pH 7.4
Storage:	4 °C,-20 °C,-80 °C
Storage Comment:	<p>Generally, lyophilized proteins are stable for up to 12 months when stored at -20 to -80°C. Reconstituted protein solution can be stored at 4-8°C for 2-7 days. Aliquots of reconstituted samples are stable at &lt; -20°C for 3 months.</p>



Western Blotting

Image 1.