

Datasheet for ABIN7194946  
**CD80 Protein (CD80) (Fc Tag)**



[Go to Product page](#)

1 Image

## Overview

Quantity:	100 µg
Target:	CD80
Origin:	Mouse
Source:	HEK-293 Cells
Protein Type:	Recombinant
Biological Activity:	Active
Purification tag / Conjugate:	This CD80 protein is labelled with Fc Tag.

## Product Details

Purpose:	Recombinant Mouse CD80/B7-1 Protein (Fc Tag)(Active)
Sequence:	Met 1-Lys 245
Characteristics:	A DNA sequence encoding the mouse CD80 (Q00609-1) extracellular domain (Met 1-Lys 245) was fused with the Fc region of human IgG1 at the C-terminus.
Purity:	> 90 % as determined by SDS-PAGE
Endotoxin Level:	< 1.0 EU per µg of the protein as determined by the LAL method.
Biological Activity Comment:	1. Measured by its binding ability in a functional ELISA.2. Immobilized human CTLA4 at 10 µg/mL (100 µl/well) can bind mouse CD80-Fc, The EC50 of mouse CD80-Fc is 28 ng/mL.

## Target Details

Target:	CD80
---------	------

## Target Details

Alternative Name:	CD80/B7-1 ( <a href="#">CD80 Products</a> )
Background:	<p>Background: The B-lymphocyte activation antigen B7-1 (referred to as B7), also known as CD80, is a member of cell surface immunoglobulin superfamily and is expressed on the surface of antigen-presenting cells including activated B cells, macrophages and dendritic cells. As costimulatory ligands, B7-1 which exists predominantly as dimer and the related protein B7-2, interact with the costimulatory receptors CD28 and cytotoxic T lymphocyte-associated antigen 4 (CTLA-4) expressed on T cells, and thus constitute one of the dominant pathways that regulate T cell activation and tolerance, cytokine production, and the generation of CTL. The B7/CD28/CTLA4 pathway has the ability to both positively and negatively regulate immune responses. CD80 is thus regarded as promising therapeutic targets for autoimmune diseases and various carcinomas.</p> <p>Immune Checkpoint Detection:</p> <p>Antibodies Immune Checkpoint Detection: ELISA Antibodies Immune Checkpoint Detection: IHC Antibodies Immune Checkpoint Detection: FCM Antibodies Immune Checkpoint Detection: WB Antibodies</p> <p>Immune Checkpoint Proteins Immune Checkpoint Targets Co-inhibitory Immune Checkpoint Targets Immunotherapy Cancer Immunotherapy Targeted Therapy</p> <p>Synonym: T-lymphocyte activation antigen CD80; Activation B7-1 antigen; B7; CD80; Cd28; Ly-53; Ly53; MIC17; TSA1</p>
Molecular Weight:	50.7 kDa
Pathways:	<a href="#">TCR Signaling</a> , <a href="#">Fc-epsilon Receptor Signaling Pathway</a> , <a href="#">EGFR Signaling Pathway</a> , <a href="#">Neurotrophin Signaling Pathway</a> , <a href="#">Positive Regulation of Immune Effector Process</a> , <a href="#">Cancer Immune Checkpoints</a>

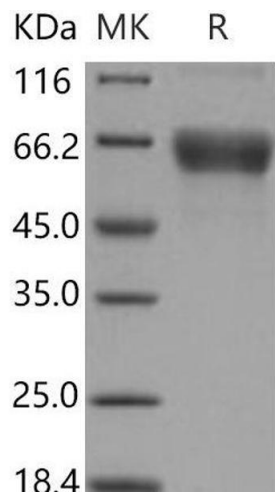
## Application Details

Restrictions:	For Research Use only
Handling	
Format:	Lyophilized
Reconstitution:	Please refer to the printed manual for detailed information.
Buffer:	Lyophilized from sterile PBS, pH 7.4
Storage:	4 °C,-20 °C,-80 °C
Storage Comment:	Generally, lyophilized proteins are stable for up to 12 months when stored at -20 to -80°C.

Handling

Reconstituted protein solution can be stored at 4-8°C for 2-7 days. Aliquots of reconstituted samples are stable at < -20°C for 3 months.

Images



**Western Blotting**

**Image 1.**