

Datasheet for ABIN7195282
CKMT1A Protein (His tag)[Go to Product page](#)

1 Image

Overview

Quantity:	50 µg
Target:	CKMT1A
Origin:	Human
Source:	Baculovirus infected Insect Cells
Protein Type:	Recombinant
Purification tag / Conjugate:	This CKMT1A protein is labelled with His tag.

Product Details

Purpose:	Recombinant Human CKMT1A Protein (His Tag)
Sequence:	Ala 40-His 417
Characteristics:	A DNA sequence encoding human CKMT1A (P12532-1) (Ala40-His417) was expressed, with a polyhistidine tag at the N-terminus.
Purity:	> 95 % as determined by reducing SDS-PAGE.
Endotoxin Level:	< 1.0 EU per µg as determined by the LAL method.

Target Details

Target:	CKMT1A
Alternative Name:	CKMT1A (CKMT1A Products)
Background:	Background: CKMT1A belongs to the ATP:guanido phosphotransferase family. It contains 1 phosphagen kinase C-terminal domain and 1 phosphagen kinase N-terminal domain. CKMT1A gene is one of two genes which encode the ubiquitous mitochondrial creatine kinase (CKMT1).

Target Details

CKMT1 is responsible for the transfer of high energy phosphate from mitochondria to the cytosolic carrier, creatine. It belongs to the creatine kinase isoenzyme family. It exists as two isoenzymes, sarcomeric MtCK (CKMT2) and ubiquitous MtCK, encoded by separate genes. CKMT1 occurs in two different oligomeric forms: dimers and octamers, in contrast to the exclusively dimeric cytosolic creatine kinase isoenzymes. Ubiquitous mitochondrial creatine kinase has 80 % homology with the coding exons of sarcomeric CKMT1.

Synonym: CKMT,CKMT1,CKMT1A

Molecular Weight: 45.3 kDa

Application Details

Restrictions: For Research Use only

Handling

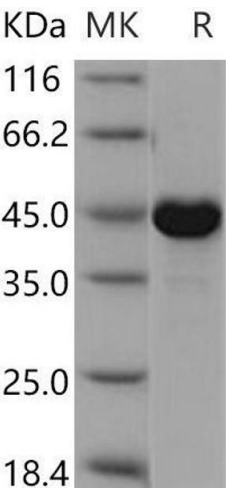
Format: Frozen, Liquid

Buffer: Supplied as sterile 20 mM Tris, 500 mM NaCl, pH 8.5, 10 % glycerol

Storage: -20 °C

Storage Comment: Store at < -20°C, stable for 6 months. Please minimize freeze-thaw cycles.

Images



Western Blotting

Image 1.