

Datasheet for ABIN7195300
CDKL2 Protein (His tag)[Go to Product page](#)

1 Image

Overview

Quantity:	50 µg
Target:	CDKL2
Origin:	Human
Source:	Baculovirus infected Insect Cells
Protein Type:	Recombinant
Purification tag / Conjugate:	This CDKL2 protein is labelled with His tag.

Product Details

Purpose:	Recombinant Human CDKL2 Protein (His Tag)
Sequence:	Met 1-His 493
Characteristics:	A DNA sequence encoding the human CDKL2 (Q92772) (Met 1-His 493) was expressed, with a polyhistidine tag at the N-terminus.
Purity:	> 80 % as determined by reducing SDS-PAGE.
Endotoxin Level:	< 1.0 EU per µg as determined by the LAL method.

Target Details

Target:	CDKL2
Alternative Name:	CDKL2 (CDKL2 Products)
Background:	Background: Cyclin-dependent kinase-like 2 (Cdkl2) is a member of cdc2-related serine / threonine protein kinase family and it is found expressed in various brain regions, including the cerebral cortex, entorinal cortex, hippocampus, amygdala, and dorsal thalamus. The high

Target Details

expression in these brain regions suggests that Cdkl2 may have functions in cognition and emotion processes. Cdkl2 accumulates primarily in the cytoplasm, with lower levels in the nucleus.

Synonym: KKIAMRE,P56

Molecular Weight: 58.3 kDa

UniProt: [Q92772](#)

Application Details

Restrictions: For Research Use only

Handling

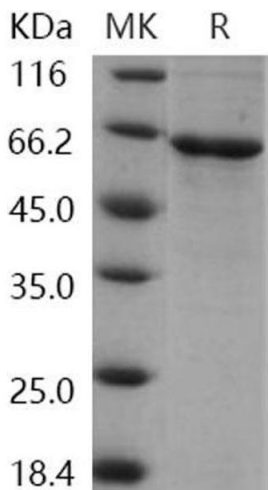
Format: Frozen, Liquid

Buffer: Supplied as sterile 20 mM Tris, 500 mM NaCl, pH 7.4, 10 % glycerol

Storage: -20 °C

Storage Comment: Store at < -20°C, stable for 6 months. Please minimize freeze-thaw cycles.

Images



Western Blotting

Image 1.