



[Go to Product page](#)

Datasheet for ABIN7195501

ESM1 Protein (His tag)

1 Image

Overview

Quantity:	50 µg
Target:	ESM1
Origin:	Mouse
Source:	Baculovirus infected Insect Cells
Protein Type:	Recombinant
Purification tag / Conjugate:	This ESM1 protein is labelled with His tag.

Product Details

Purpose:	Recombinant Mouse ESM1/Endocan Protein (Baculovirus, His Tag)
Sequence:	Met1-Arg184
Characteristics:	A DNA sequence encoding the mouse TLR2 (Q9QYY7) (Met1-Arg184) was fused with a polyhistidine tag at the C-terminus.
Purity:	> 95 % as determined by SDS-PAGE
Endotoxin Level:	< 1.0 EU per µg of the protein as determined by the LAL method.

Target Details

Target:	ESM1
Alternative Name:	ESM1/Endocan (ESM1 Products)
Background:	Background: ESM1 is a secreted protein which is produced by adipocytes. It has been noticed that ESM1 may play some role in obesity-associated vascular disease since circulating ESM-1 levels are reduced in the overweight and obese. ESM1 is mainly expressed in the endothelial

Target Details

cells in human lung and kidney tissues. The expression of ESM1 gene is regulated by cytokines, suggesting that it may play a role in endothelium-dependent pathological disorders. Recently, ESM1 has been described as a specific biomarker of tip cells during neoangiogenesis. Its expression has been shown to be increase in presence of pro-angiogenic growth factors such as VEGF or FGF-2. In hypervascularized cancers, overexpression of endocan has been detected by immunohistochemistry using monoclonal antibodies against ESM1.

Synonym: Endothelial cell-specific molecule 1, ESM-1, Esm1, Endocan

Molecular Weight: 19.1 kDa

UniProt: [Q9QYY7](#)

Pathways: [Growth Factor Binding](#)

Application Details

Restrictions: For Research Use only

Handling

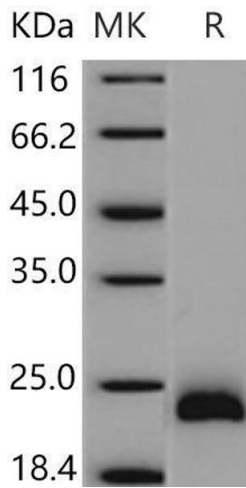
Format: Lyophilized

Reconstitution: Please refer to the printed manual for detailed information.

Buffer: Lyophilized from sterile 20 mM Tris, 500 mM NaCl, pH 8.0, 10 % glycerol

Storage: 4 °C,-20 °C,-80 °C

Storage Comment: Generally, lyophilized proteins are stable for up to 12 months when stored at -20 to -80°C. Reconstituted protein solution can be stored at 4-8°C for 2-7 days. Aliquots of reconstituted samples are stable at < -20°C for 3 months.



Western Blotting

Image 1.