

Datasheet for ABIN7196371
IL11RA Protein (His tag)



[Go to Product page](#)

1 Image

Overview

Quantity:	100 µg
Target:	IL11RA
Origin:	Mouse
Source:	HEK-293 Cells
Protein Type:	Recombinant
Biological Activity:	Active
Purification tag / Conjugate:	This IL11RA protein is labelled with His tag.

Product Details

Purpose:	Recombinant Mouse IL11RA/IL11Ra Protein (His Tag)(Active)
Sequence:	Met 1-Gln 367
Characteristics:	A DNA sequence encoding the extracellular domain of mouse IL11Ra (NP_001156873.1) (Met 1-Gln 367) was expressed, with a C-terminal polyhistidine tag.
Purity:	> 85 % as determined by SDS-PAGE
Endotoxin Level:	< 1.0 EU per µg of the protein as determined by the LAL method.
Biological Activity Comment:	Measured by its ability to bind mouse IL6ST in a functional ELISA.

Target Details

Target:	IL11RA
Alternative Name:	IL11RA/IL11Ralpha (IL11RA Products)

Target Details

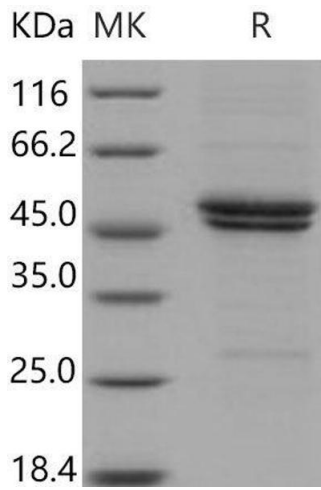
Background:	<p>Background: Interleukin 11 receptor, alpha subunit (IL11RA/IL-11RA) is a subunit of the interleukin 11 receptor which is a member of the hematopoietic cytokine receptor family. IL11RA/IL-11RA is expressed in a number of cell lines, including the myelogenous leukemia cell line K562, the megakaryocytic leukemia cell line Mo7E, the erythroleukemia cell line TF1, and the osteosarcoma cell lines, MG-63 and Saos-2. It is also expressed in normal and malignant prostate epithelial cell lines. Expression levels are increased in prostate carcinoma. This particular receptor is very similar to ciliary neurotrophic factor, since both contain an extracellular region with a 2-domain structure composed of an immunoglobulin-like domain and a cytokine receptor-like domain. Alternative splicing has been observed at this locus, and three variants encoding two different isoforms have been identified. IL11RA/IL-11RA is a receptor for interleukin-11. The receptor systems for IL6, LIF, OSM, CNTF, IL11 and CT1 can utilize IL6ST for initiating signal transmission. Defects in IL11RA/IL-11RA are a cause of craniosynostosis and dental anomalies (CRSDA). CRSDA is a disorder characterized by craniosynostosis, maxillary hypoplasia, and dental anomalies, including malocclusion, delayed and ectopic tooth eruption, and/or supernumerary teeth. Some patients also display minor digit anomalies, such as syndactyly and/or clinodactyly.</p> <p>Synonym: AI314697,GP130,Il-11ra,Il11ra,Il11ra1,Il11ra2,NR1,RP23-167112.2</p>
Molecular Weight:	39.2 kDa
NCBI Accession:	NP_001156873
Pathways:	JAK-STAT Signaling , Growth Factor Binding

Application Details

Restrictions:	For Research Use only
---------------	-----------------------

Handling

Format:	Lyophilized
Reconstitution:	Please refer to the printed manual for detailed information.
Buffer:	Lyophilized from sterile PBS, pH 7.4
Storage:	4 °C,-20 °C,-80 °C
Storage Comment:	Generally, lyophilized proteins are stable for up to 12 months when stored at -20 to -80°C. Reconstituted protein solution can be stored at 4-8°C for 2-7 days. Aliquots of reconstituted samples are stable at < -20°C for 3 months.



Western Blotting

Image 1.